



13.63C

WHEEL SHOVEL
CINEMATISM

A "WITH"

PRELIMINARY



DIESEL ENGINE

6-cylinder in-line engine, supercharged, charge air cooling, electronically controlled common-rail, exhaust gas recirculation, water cooling, dry filtration, oxidation catalyst (DOC), diesel particulate filter (DPF), selective catalytic reduction (SCR).

Engine emitted according to EC Directive 97/68 - Stage V/Tier 4f.

Guy Deutz TCD 6.1 L6 Max.
power 135 kW - 184 HP Rpm
setting 2,200
ISO/TR 14396 power 129 kW - 175 HP
Potenza EEC 80/1269 129 kW - 175 CV
Maximum torque Nm 750
Bore mm 101
Race mm 126
Engine capacity cm3 6,057

ELECTRIC SYSTEM

Electrical system 12 Volts
Startup 24 Volts
Drums 2x 12 Volts
Total capacity EN 60095-1 200 Ah - 850 A
Alternator 100 A
Reverse horn Standard
Electrical system IP 67 DIN 40050

TRANSMISSION

Hydrostatic with automatic power regulation in closed circuit with pump and two variable displacement motors.

Three automatic forward/reverse speeds with single lever electric control.

Gear drive with automatic transmission and clutch to disconnect an engine during travel speed.

	After you	Backwards
1st gear km/h	0÷8	0÷8
2a marcia km/h	0÷17	0÷17
3a marcia km/h	0÷40	0÷40

ASSAULT

Heavy Duty axles with planetary final drives on each wheel and with automatic proportional limited slip differentials. Rigid front axle. Oscillating rear axle with 20° excursion. Transfer case which transfers movement to the two axles - front and rear - by means of cardan shafts.

Standard self-locking on front axle, optional on rear axle.

BRAKING SYSTEM

Service brake: hydraulic multi-disc in oil bath on 4 wheels.

Parking brake: negative hydraulic in electrically operated rear axle.

TIRES

Standard 20.5 - 25
On request 20.5 R25 / 620/70 R26

PLANT FROM STEERING

Servo-assisted steering by means of **LOAD SENSING** power steering

Steering angle mm 80°
Turning radius inside tyres mm 3,130
External tire turning radius mm 5,500 External bucket turning radius mm 6,150

HYDRAULIC SYSTEM

Consisting of three pumps, the first with variable displacement pistons with "PCS" power control for the front shovel circuit, the second with gears for the steering circuit, the third for the brake circuit and cooling fan, having double rotation speed. 2-section modular distributor with master valve. Double effect jacks. Hydraulic oil cooling radiator and fan with two rotation speeds. Full flow filter on the return circuit. Single lever servo for 4-position lift control and 3-position bucket control.

Max throughput lt/1' 195
Loader calibration pressure 280 bar
Steering setting pressure 175 bar
Lifting jacks mm 120x750
Bucket jacks mm 130x485

SUPPLIES

Motor lt Front	15,5
differential lt	20,5
Rear differential lt	20,5
Distributor lt Hydraulic circuit..... l	3,5
Fuel lt Radiator	190
water l	30
Adblue lit	32

TECHNICAL FEATURES

Charger:

Standard bucket capacity m3 2.7
Standard bucket width mm 2.540
Static tipping load - in line kg 10,800
Static tipping load - turned 40° kg 9,600
Max hydraulic lifting capacity at max height ... kg 10.500
Unloading height at the pin mm 3.950
Discharge height at 42° mm 3.050
Discharge distance at 42° mm 1.050
Breakout force kg 12,000

DIMENSIONS AND WEIGHTS

Max length in transfer mm 6.950
Max width in transfer mm 2.540
Maximum height mm 3,214
Roadway mm 1.850
External tire width mm 2.380
Step kg 2,980
Free light kg 455
Standard operating weight kg 13,700
Maximum weight allowed kg 14,150

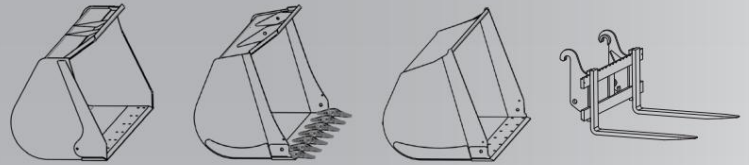
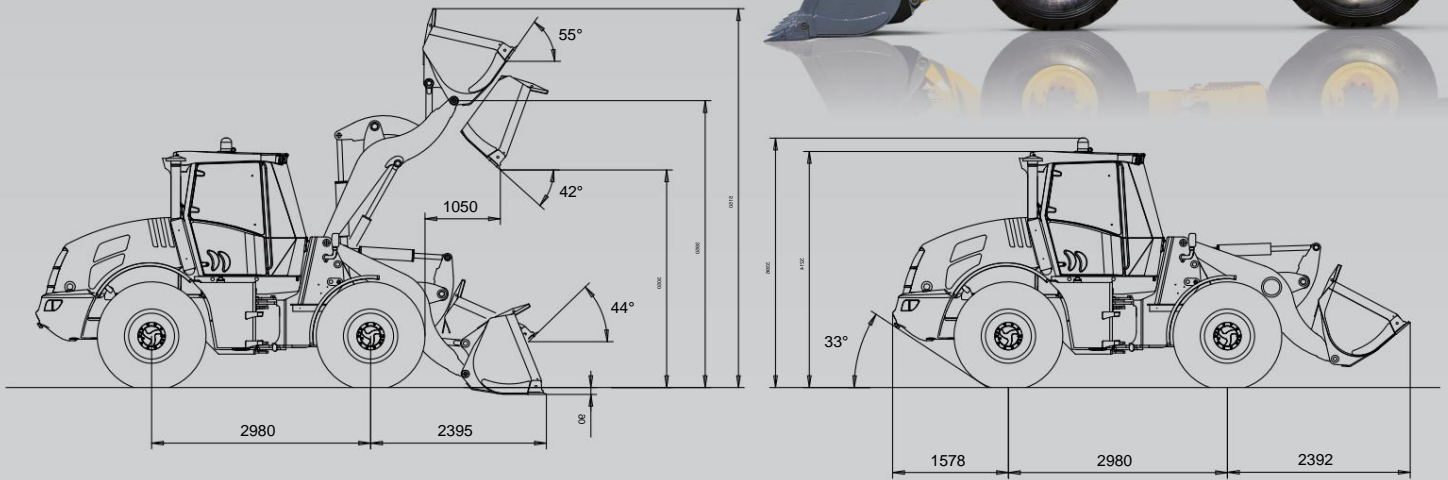


13.63C

WHEEL SHOVEL
CINEMATISM

A "WITH"

PRELIMINARY



PERFORMANCE DATA

		STANDARD	ROCK	INCREASED	FORKS
Bucket capacity (SAE) heaped	m ³	2,7	2,2	3,0	
Bucket width	mm	2.540	2.540	2.540	
Bucket weight	kg	900	850	950	
Max operating height	mm	5.150	5.100	5.225	
Unloading height at the pin	mm	3950	3.950	3.950	
Relief angle	°	42°	42°	42°	
Dump height	mm	3.050	3.100	3.017	
Discharge distance	mm	1050	994	1.087	
Max. discharge distance	mm	2.025	1.969	2.062	
Online tipping load	kg	10.800	11.000	10.400	
Tipping load - machine turned	kg	9.600	9.700	9.200	
Breakout force	kg	12.000	12.973	11.478	
Maximum length in transfer	mm	6.950	6.825	7.025	
Bucket outside turning radius	mm	6.150	6.125	6.200	
Standard operating weight	kg	13.700	13.650	13.750	
Static tipping load, machine turned					7.000
Operating load EN 474-3 (80%) [•]					5.600
Operating load EN 474-3 (60%) [•]					4.200
Operating load DIN 24094 (50%) [•] [•] Load center at 500 mm					3.500



VENIERI

Via Piratello, 106 - 48022 Lugo (RA) ITALY
Tel. +39 0545 904411 Fax +39 0545 30389 e-mail:
info@vf-venieri.com www.vf-venieri.com **Spare**
Parts Service Tel. +39
0545 904429 Fax +39 0545 24555