

All Rights Reserved

Materials and specifications are subject to change without notice.
Featured machines in photos may include additional equipment. See your XCMG dealer for available options.



Hydraulic Excavators
XE235ECR



XCMG European Sales and Services GmbH

Address: Europark Fichtenhain B 4,47807 Krefeld, Deutschland
Tel: +49 (0) 2151 8206 890
Fax: +49 (0) 2151 8206 899
E-Mail: info@xcmg-ess.de

XUZHOU CONSTRUCTION MACHINERY GROUP IMP. & EXP. CO., LTD

Address: No.1, Tuolanshan Road, Xuzhou Economic Developing Zone, Jiangsu, China 221004
Tel: + 86(0) 516 8773 9703
Fax: + 86(0) 516 8773 9230
E-Mail: europa@xcmg.com

www.xcmg.com

Rated Power: 129 kW/2200 rpm
Operating Weight: 25800 kg
Standard Bucket Capacity: 1.0 m³



XCMG XE235ECR builds further on its reputation from the previous series based on the quality, reliability and durability. The enhancements deliver the best fuel efficiency while not compromising on power, reducing emissions and consumption, while increasing productivity.

If you are going to get your work done with a durable brand, you can trust XCMG and look no further than our XE235ECR.

RELIABILITY:

Even under the harshest conditions, XCMG has made its aim to build long-life products. XCMG has already kept a long relationship with the best component suppliers in the world. The Cummins engine, Kawasaki main pump, main valve and swing motor, and high-quality travel motors guarantee you the best performance. Oversized cylinders in combination with long-life reinforced pins, polymer shims and bushings ensure the best performance with unchanged durability.

PRODUCTIVITY AND EFFICIENCY:

Strong and unmatched bucket and arm digging forces give XE235ECR the ability to fulfill the most challenging tasks on your jobsite with excellent productivity and efficiency.

SAFETY SOLUTIONS:

A rear camera and large side mirrors, powerful LED lights, anti-slip steps and platforms. Guard rails for safe access to the upper structure. The ROPS (Roll Over Protective Structure) and the OPG (Operator Protective Guard) cabin ensures the operator's safety.

VERSATILITY:

Specific boom and arm together with special configurations are available to efficiently carry out any task your business requires.

EASY-TO-USE ATTACHMENTS:

Programmable auxiliary lines AUX1 (single and dual way), AUX2 and PTO independent pump control technology are provided to support your hydraulic attachments like grabs, shear, hammer and many more.

COMFORTABILITY:

To ensure operator's comfort, we offer a spacious cab with low noise and vibration levels and excellent all-round visibility. Fully adjustable heated air suspension seat and air conditioning with climate control as standard.

CONTROLLABILITY:

8 attachment and 3 power modes, proportional control with a user-friendly 8" TFT LCD color monitor.

STRONG POWER:

The CUMMINS B6.7 Stage V engine is exceptionally powerful with high torque at low revs. It makes that the maximum flow is already available at low revs with a fuel-efficient status.

ADVANCED FILTRATION:

Easily accessible and highly efficient filters remove all contamination from your jobsite, protect your investment in the best possible way.

SIMPLE AND EASY MAINTENANCE:

Easy access to all compartments. Maintenance data and signs are directly available from the monitor.

UNDERCARRIAGE DURABILITY:

The CAE designed X-shape undercarriage realizes even weight distribution, increases the stability and durability, and prevents the damage from rocks and debris.

REDUCED TAIL SWING RADIUS:

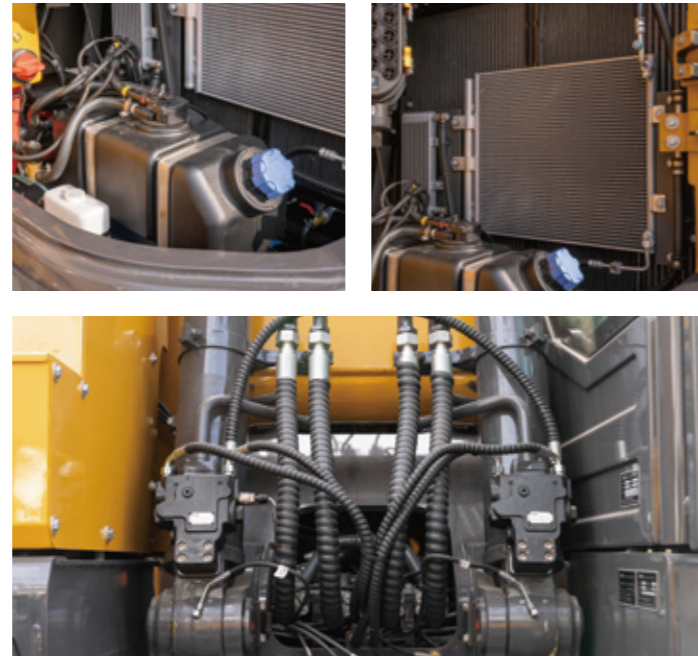
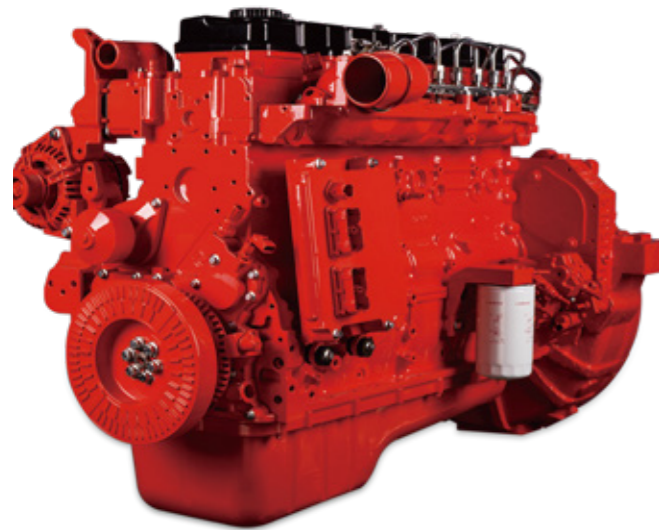
The ultra-short tail swing radius makes it easier to work in narrow spaces. The machine has not only a short rear radius, but also a short front turning radius. In urban areas, it is a great advantage when you have to turn around within a space of 4.005 meters.



Power without compromise

The XE235ECR takes even the heaviest tasks with efficient, dependable performance that saves your time and money; Our customized environmentally friendly, high-torque and high-powered engine meets European Stage V emission standards. The DPF (Diesel Particulate Filter), DOC (Diesel Oxidation Catalyst) and SCR technology controls emission easily.

The new electronic positive flow hydraulic system that has fast response and good coordination matches with the engine system in a reasonable way that minimizes fuel consumption. The non-linear power control technology is introduced into the main pump that can reduce the light-load output power and increase heavy-load system power. Light load energy increases by 4% and heavy load efficiency increases by 3%.



POWER MATCH TECHNOLOGY

XE235ECR is equipped with a Cummins B6.7 engine. Famous for its excellent fuel efficiency, reliability and long service intervals, it combines exceptional power output and high torque at low revs.

Selective Catalytic Reduction (SCR) technology in combination with a Diesel Oxidation Catalyst (DOC) - ensures the compliance with Stage V regulations. There is no need for a DPF.

If the engine is the heart of the excavator, the XICS (XCMG Intelligent Control System) is its brain - providing a perfectly synchronized communication link between the engine's ECU (Electronic Control Unit) and the hydraulic system. The CANBUS (Controller Area Network) system enables a constant flow of information between the engine and the hydraulic system, so that power is delivered exactly as needed.

FUEL ECONOMY TECHNOLOGY

- A choice between 3 power modes and 8 attachment modes guarantees the optimum performance under all conditions.
- The electronic control of fuel consumption.
- The auto-idle function reduces the engine speed when the controls are inactive for a preset amount of time or when the safety lever is switched off. The engine will immediately return to its original selected speed when the operator touches the control panel.
- For optimum cooling, the fan speed is controlled by a viscous clutch that results in lower fan noise with better fuel efficiency.

The XE235ECR cabin is designed to support the increased productivity with a spacious and comfortable operating environment. The pressurized cabin is ISO-certified for your safety, offers a comfortable, heated, and fully adjustable air suspension seat, several storage compartments, and a clear all-round view of your jobsite. The reduced noise and vibration levels with automatic air-conditioning/climate-control will make your workday easier and more comfortable.



POWER

An industry-leading Cummins engine that saves on fuel and meets the Stage V emission regulation powers the XCMG XE235ECR.

Advanced control technology

The ergonomic, advanced and simple-to-operate - Kawasaki proportional joysticks deliver ultra-precise and smooth control over all movements. The orientation of the joystick's rollers and buttons are adjustable.

Air conditioning with automatic climate control

You can adjust the system's air temperature to maintain the optimal desired temperature. A recirculation function is also available.

AM-FM radio and DAB Bluetooth radio

AM-FM radio is standard, DAB Bluetooth radio is optional, and both are equipped with Bluetooth function.

Storage space

The new cab has sufficient storage compartments-including a document bag and a cup holder.

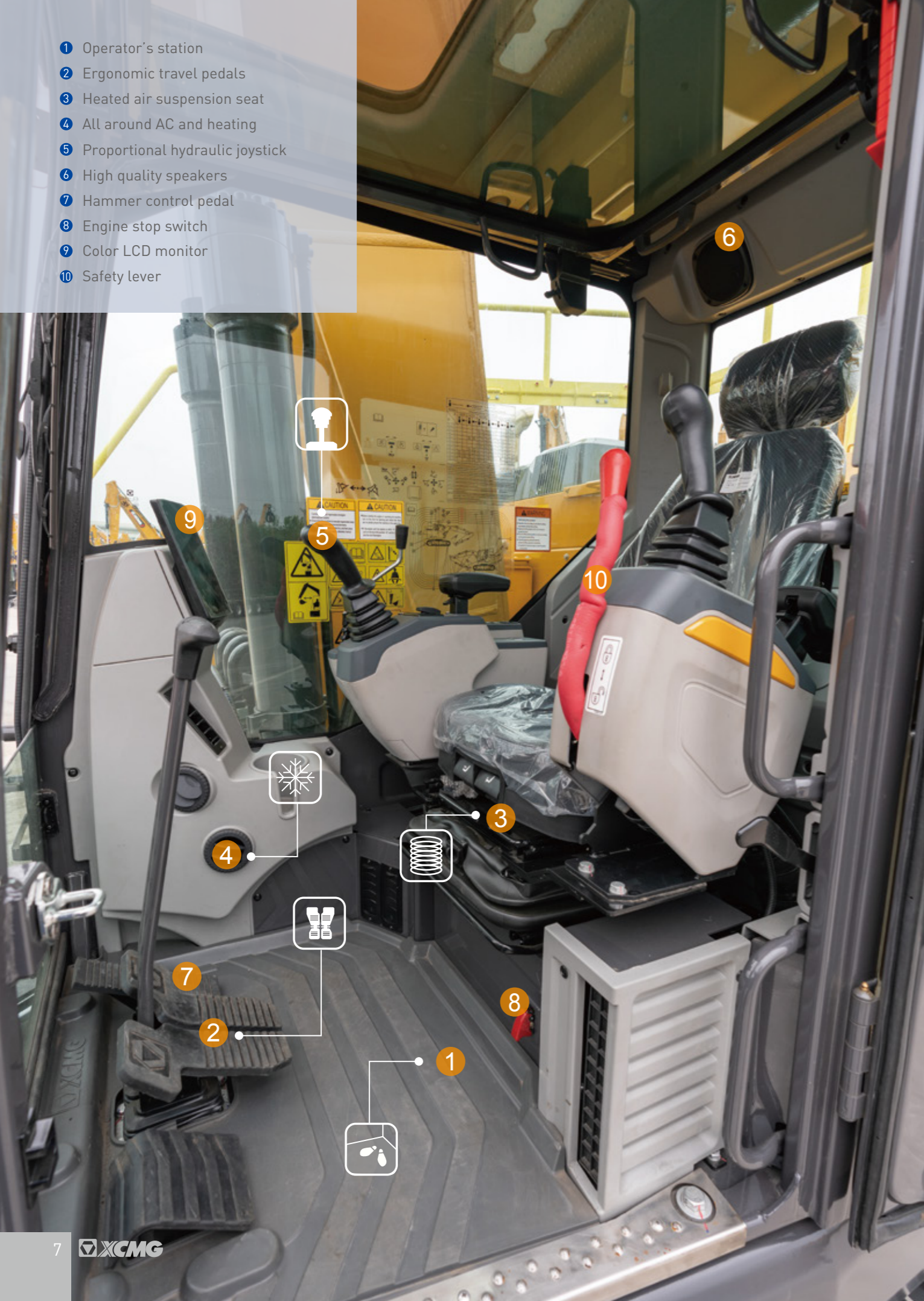
Cab suspension

Even at the roughest applications where you are working, the cab's improved new suspension system dampens and smooths out unwanted feedback from your jobsite.

Quick coupler control

A standard quick coupler hydraulic system with pipelines lets you exchange your attachment easily from the operator's seat. It applies to all common systems.

- ① Operator's station
- ② Ergonomic travel pedals
- ③ Heated air suspension seat
- ④ All around AC and heating
- ⑤ Proportional hydraulic joystick
- ⑥ High quality speakers
- ⑦ Hammer control pedal
- ⑧ Engine stop switch
- ⑨ Color LCD monitor
- ⑩ Safety lever



Simple and Easy Control

Machine interfaces

All machine interfaces – including joysticks, buttons, the control panel, and the larger LCD monitor – are ergonomically designed for optimum control and efficiency, resulting in increased productivity and workplace well-being. The switches have been simplified and climate control is now integrated into the control panel for easy adjustments.

- The new multi-function 8" TFT LCD monitor displays a comprehensive range of useful technical information, allowing you to check the machine's status and settings at a glance.
- High sensitive & low-damping joysticks and convenient controls enable you to work smoothly and safely with minimum effort.
- The newly adjustable proportional auxiliary functions and PTO independent pump control technology support the precise and smooth control of your attachments.

Intelligent monitor

The upgraded 8" TFT monitor features a day and night display with full user access to the machine settings and maintenance data. Any abnormality is clearly displayed on the screen, allowing you to work safely and be confident with an accurate overview of all conditions.

All-important data can be directly monitored from the main screen.

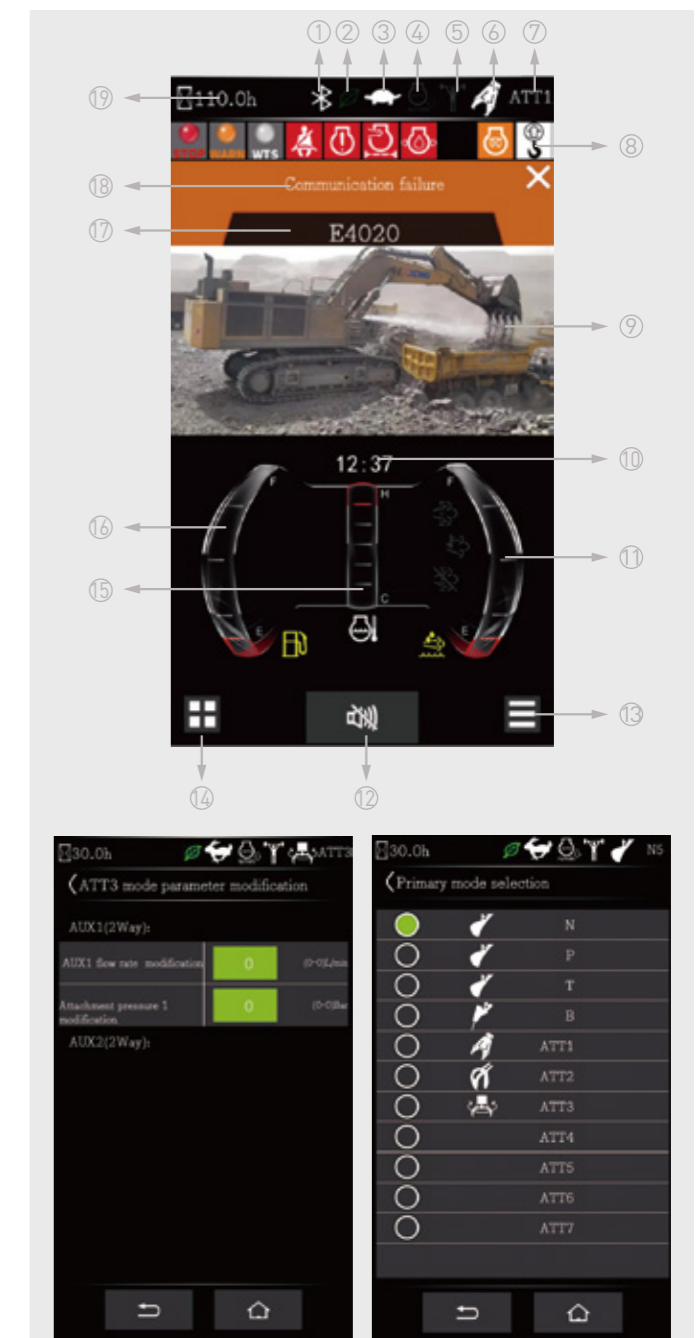
- | | |
|-------------------------|-----------------------|
| 1. Bluetooth | 2. Energy saving icon |
| 3. Travel speed (H/L) | 4. Automatic idle |
| 5. Power boost | 6. Work mode |
| 7. Mode and gear | 8. Notification icon |
| 9. Camera | 10. Time and date |
| 11. Urea level | 12. Mute button |
| 13. Main interface set | 14. Menu |
| 15. Coolant temperature | 16. Fuel level |
| 17. Fault code area | 18. Fault description |
| 19. Hour meter | |

Dynamic power management

- Activating the power boost control system increases the digging force by 8%.
- Auto-idling starts a few seconds after all controls are returned to the neutral position.

8 work modes and 3 power modes

Deliver the needed power according to your specific application while minimizing fuel consumption. One click mode for quick selection and more convenient operation. Visual adjustment of pressure and flow parameters for more intelligent control.



Designed for long-term robustness and safety

XCMG has developed one of the most rigorous testing procedures to test the strength and reliability. XCMG E-series has durability under the most extreme conditions and is therefore one of the most popular brands in its home market. We continually manufacture the most durable machines in order to reduce the cost of ownership. The robust upper frame, undercarriage structure, and front attachments show their real value in tough working conditions and guarantee higher productivity.



Reinforced durability of the X-chassis

The X-shaped undercarriage has a higher durability than demanded on the jobsite, as proven through numerous tests, including road tests and virtual simulation.

Undercarriage durability with easy maintenance

- The chain is composed of sealed, self-lubricating links for long-term performance
- Long life track tensioners and idlers
- Heavy-duty wear resistant cast sprockets
- Durable lubricated track rollers

Strengthened boom and arm

FEA has been used to calculate the best load distribution throughout the machine's structure. For better protection of the base of the arm, reinforced bars have been added. The arm structure has been strengthened for the roughest conditions.

Hi-grade (high-pressure) hoses

The E-series uses a new type of high-pressure hoses with improved heat and pressure resistance to increase the durability of the machine.

Reinforced pins, bushings and polymer shims

The new series has improved the lubricity of the connecting parts between the machine and attachments. Gaps between the machine and the attachment are minimized by wear-resistant long-life pins, bushings, and polymer shims, ensuring the highest performance with invariable durability.

Excellent serviceability

Our machines are designed for simple routine maintenance, while skilled XCMG technicians are available to provide extra support if needed. To get the most out of your machine, choose the package you need from a broad range of service agreements. Uptime, productivity and residual value are all maximized, making the XE235ECR an economical and rewarding choice.



Simple and easy maintenance

- A large guard rail is installed along with anti-slip steps and plates, for safer and easier access to the upper structure.
- The cab air conditioner filter is lockable and located on the side of the cab for easy access.
- The battery cut-off switch is equipped as a jobsite-required safety measure, which can easily disconnect the battery.
- Shut-off valves on the pre-filter pipeline and the fuel tank drain pipeline make the service easier and prevent the pollution from leakage.
- The engine parts can be reached easily via the top and side panels.
- For extra accessibility and maintenance convenience, all filters (engine oil filter, fuel pre-filter, fuel filter and hydraulic pilot filter) are located in the pump compartment.

Pre-start monitoring system

The XE235ECR has a pre-start monitoring system that shows you the coolant temperature, hydraulic oil temperature, engine oil pressure, fuel level and AdBlue® level. It also shows the fluid and filter replacement cycle to keep the machine in top working condition.

Proactive maintenance solutions

- The extended warranty: covering parts, man-hour, and mileage.
- Routine maintenance: your dealer will support you with routine service at regular intervals.
- Genuine parts: manufactured and tested to ensure a long service life of your machine.

SCR tank and easy diesel filling

The ECU (Engine Control Unit) monitors the AdBlue® system through sensors and warns the operator of potential system malfunctions. The fuel filler pump, an on-board pump system, lets you fill your fuel tank quickly from an external source (like a fuel drum) – the system stops automatically when the fuel tank is full, or the fuel source is empty.

Grease centralized lubrication points

Make the maintenance easier.

■ Engine

Designed to deliver superior performance and fuel efficiency, the Cummins Stage V diesel engine fully meets the emissions regulations. To optimize machine performance, the engine uses high-pressure fuel injectors, a VGT™ turbocharger, inter-cooler, and electronic engine controls. It's 4-cycle water-cooled, turbocharged, and adopts the technology of Exhaust Gas Recirculation (EGR) and Selective Catalytic Reduction (SCR) without a Diesel Particulate Filter (DPF).

XE235ECR	
Model	Cummins B6.7
No. of cylinders	6
Rated power (ISO)	129 kW/2200 rpm
Max. torque	881 N·m/1300 rpm
Idle (low - high)	700-1200 rpm
Piston displacement	6.7 L
Bore × stroke	107 mm × 124 mm
Starter	24 V × 7.8 kW
Air filter	"The latest Donaldson PSD air filter and pre-filtered dust separator"

■ Undercarriage

The extremely robust overall structure - made of high-quality, durable materials, with all welded structures designed to limit stresses.

- Lifetime lubricated track rollers, idlers and sprockets with floating seals.
- Track shoes made of induction-hardened alloy with triple grouser
- Heat-treated connecting pins.
- Hydraulic track adjuster with shock-absorbing tension mechanism

• Number of rollers and track shoes per side

XE235ECR	
Carrier rollers (standard shoes)	2
Track rollers	9
Number of links and shoes per side	49
Overall track length	4444 mm

■ Weight

	Shoe width (mm)	Operating weight (kg)	Ground pressure (kPa)
Triple grousers	600(Std.)	25800	53.7
	700	26100	46.5
	800	26350	41.1

■ Hydraulic system

The XICS (XCMG Intelligent Control System) is the brain of the excavator - minimizing fuel consumption and enabling the efficiency of the hydraulic system to be optimized for all working conditions. To harmonize the operation of the engine and the hydraulics, the XICS is connected to the engine's electronic control unit (ECU) via a data transfer link.

- The hydraulic system enables independent and combined operations - 2-speed travel offers either increased torque or high travel speed.
- Cross-sensing pump system and auto-deceleration system improves fuel efficiency.
- 8 attachment modes, 3 power modes - flow and pressure control of auxiliary hydraulic circuits from the control panel.
- The computer controls the pump flow.

• Pump flow and system pressure

XE235ECR	
Main pumps, type	"2 × variable displacement tandem axial piston pumps"
Maximum Flow	2 × 240.5 L/min
Pilot Pump, Type	Gear Pump
Maximum Pilot Flow	18.5 L/min
Maximum PTO Pump Flow	49.5 L/min
Relief valve settings:	
Pressure up	34.3/37 MPa
Travel	34.3 MPa
Swing	27.5 MPa
Pilot	3.9 MPa

■ Cab

Optimal climate control is provided by the integrated air-conditioning and heating system. An automatically- controlled fan supplies the pressurized and filtered cab air, which is distributed throughout the cab from multiple vents. The fully adjustable heated air suspension operator's seat includes a seat belt. The operator can adjust the ergonomic seat and joystick console separately according to his preferences.

Note - Declared single-number noise emission values are the sum of measured values and the associated uncertainty, and they represent upper boundaries of the range of values which is likely to occur in measurements.

• Noise emission

XE235ECR	
Noise level LpA (ISO 6396)	72 dB(A)
Noise level LwA (ISO 6395)	101 dB(A)

■ Component weights

Item	Unit	XE235ECR	Remarks
Upper structure without front attachment	Kg	12160	With counterweight
Lower structure assembly	Kg	9740	600 mm shoe
Front assembly	Kg	3510	Without cylinder
Counterweight	Kg	6000	Standard counterweight
Boom	mm/kg	1530	Not including bushing
Arm	mm/kg	730	Not including bushing

■ Swing mechanism

The swing mechanism uses an axial piston motor, driving a 2-stage planetary reduction gear for maximum torque bathed in oil.

- Swing bearing: single-row, shear type ball bearing with induction hardened internal gear.
- Internal gear and pinion immersed in lubricant.

• Swing speed & torque

XE235ECR	
Maximum swing speed	12.1 rpm
Maximum swing torque	67 kN·m

■ Drive

An independent, high-torque axial piston motor through a planetary reduction gearbox drives each track. Two levers with foot pedals guarantee smooth travel with counter-rotation on demand.

The track frame protects the travel motors with hydraulically released multi-disc brakes and planetary gears.

• Speed & traction

XE235ECR	
Travel speed (low - high)	3.4/5.3 km/h
Maximum traction	210 kN
Maximum gradeability	35° / 70%

■ Fluid capacities

XE235ECR	
Fuel tank	300 L
Hydraulic oil tank	130 L
Engine oil	24 L

■ Hydraulic cylinders

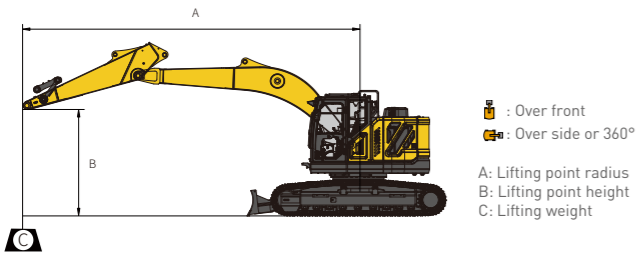
High-strength steel piston rods and cylinder bodies. A shock-absorbing(cushion) mechanism fitted in all cylinders for shock-free operation and extended piston life.

Cylinders	Quantity	Bore × rod × stroke (mm)
Boom	2	130 × 90 × 1319
Arm	1	140 × 100 × 1475
Bucket	1	120 × 85 × 1060
Blade	2	140 × 85 × 310

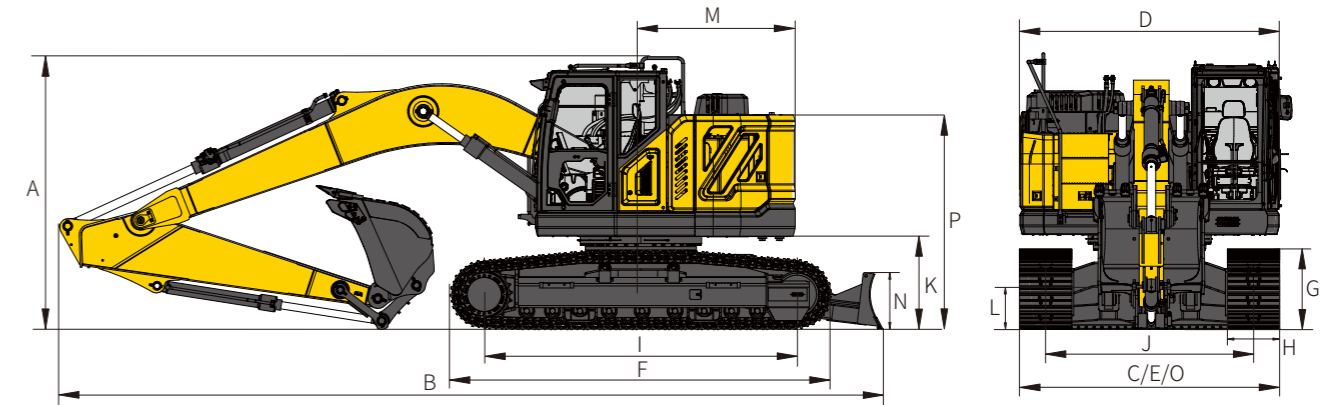


Standard undercarriage width: 2990 mm - W/o Bucket

A \ B	1.5 m		3.0 m		4.5 m		6.0 m		7.5 m		At Max.Reach		
	Over front	Over side or 360°	Over front	Over side or 360°	Over front	Over side or 360°	Over front	Over side or 360°	Over front	Over side or 360°	Over front	Over side or 360°	A
9.0m	kg				*5423	*5423	*5805	5452			*6329	*6329	4.3m
7.5m	kg				*5798	*5798	*5705	5456			*5291	5197	6.2m
6.0m	kg				*7153	*7153	*6284	5303	*5889	3804	*4902	3436	8.0m
4.5m	kg		*9086	*9086	*9173	7584	*7202	5072	5950	3705	*5036	3156	8.4m
3.0m	kg				*11018	7099	8063	4841	5825	3592	4916	3052	8.4m
1.5m	kg				*5743	*5743	*11945	6833	7873	4675	5729	3506	8.3m
0.0m	kg				*11934	6756	7789	4603	5697	3477	5446	3338	7.8m
-1.5m	kg	*6472	*6472	*10630	*10630	*11934	6756	7789	4603	5697	3477	5446	3338
-3.0m	kg	*11633	*11633	*15502	12772	*11054	6810	7823	4632			6425	3897
-4.5m	kg			*12242	*12242	*8878	7008					*6860	5328



- The lifting capacity is based on the ISO10567 standard.
- * = The maximum lifting capacity is limited by the hydraulic capacity of the machine.
- The lifting capacity does not exceed 87% of the hydraulic capacity or 75% of the tipping load with the machine on level and firm ground.
- The operator should be familiar with the machine's operation and maintenance manual. Local regulations concerning the safe operation of machinery must be followed at all times.
- The lift diagrams only covers machines that are originally built by XCMG; without lifting chains and any other lifting equipment.
- When the excavator is used to lift or handle materials, it must comply with local regulations.

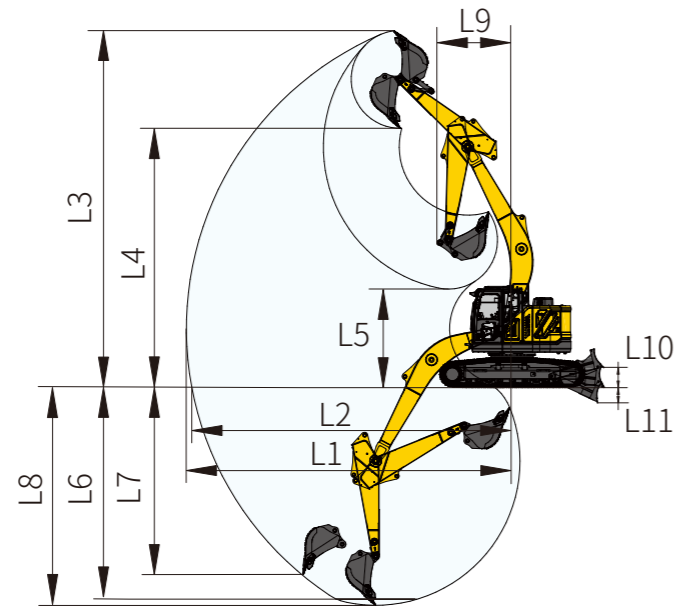


Dimensions

XE235ECR		One-piece boom
Boom length - mm		5680
Arm length - mm		2910
A	Overall height - mm	3181
B	Overall length - mm	9602
C	Overall width - mm	2990
D	Upper structure width - mm	2980
E	Chassis width - mm	2990
F	Track length - mm	4444
G	Track height - mm	924
H	Standard track shoe width - mm	600
I	Track wheelbase - mm	3647
J	Track gauge - mm	2390
K	Counterweight ground clearance - mm	1085
L	Minimum ground clearance - mm	485
M	Tail swing radius - mm	1800
N	Dozer blade height - mm	663
O	Dozer blade width - mm	2990
P	Hood height - mm	2503

Digging forces (ISO)

XE235ECR		One-piece boom
Boom length - mm		5680
Arm length - mm		2910
Bucket capacity - m³		1
Bucket digging force (Normal/Press. Up) - KN		129.3/139.5
Arm digging force (Normal/Press. Up) - KN		107.7/116.2



Working range

XE235ECR		One-piece boom
Boom length - mm		5680
Arm length - mm		2910
A	Maximum reach - mm	9944
B	Maximum reach at GRP - mm	9778
C	Maximum digging height - mm	10899
D	Maximum unloading height - mm	7919
E	Minimum unloading height - mm	3012
F	8 ft. level floor digging depth - mm	6456
G	Maximum vertical digging depth - mm	5692
H	Maximum digging depth - mm	6646
I	Minimum swing radius - mm	2291
J	Maximum lifting height of dozer blade - mm	610
K	Max. cutting depth of dozer blade - mm	480

Engine

AdBlue	●
Automatic preheating	●
Fuel-water separator with water level indication sensor	●
Axial seal air cleaner	●
Air prefilter	●
50 C high temperature ambient cooling assembly	●
Dust screen for radiator	●
Fuel marker	●
Fuel-water quick release device	●
Electromagnetic controlled silicon oil clutch	●
Fuel filling pump	●
Air pressure differential indicator	●
Auto-idle function	●

Hydraulic System

One & two way hydraulic line for hammer and thumb plier	●
Hydraulic quick coupler lines	●
Attachment tilting and rotating lines	●
Hydraulic oil ISO VG 46	●
Hydraulic oil ISO VG 32	○
Hydraulic oil ISO VG 68	○
Right proportional joystick with rocker switch [AUX1]	●
Left proportional joystick with rocker switch [AUX2]	●
PTO pump	●

Cab & Interior

Pressurized cab	●
Air suspension seat with heater	●
Control box	●
Rain visor [Couldn't be equipped with the Safety bar on the front upper windshield together]	●
Openable front windshield	●
Sliding fold-in front window	●
Air conditioner with defroster [automatic type] [pressurization function]	●
Color LCD capable of displaying warning information, filter / liquid replacement information and working hours	●
Travel control pedal with detachable manual control lever	●
Double stereo speaker	●
Cup holder	●
Coat hook	●
Floor mat	●
Retractable seat belt	●
High and low travel speed switch	●
One-key boost mode	●
Top sunroof	●
Windshield wiper with intermittent feature	●
File packet	●
Rear window emergency exit	●
Hammer for emergency escape	●

Undercarriage

2x2 track clamp	●
2x9 track rollers	●
2x2 carrier rollers	●
Bottom frame traction ring	●
600 mm [24"] triple grouser track shoes	●
Protective device kit: undercarriage bottom sealing plate, travel motor sealing plate	●
700 mm [28"] triple grouser track shoes	○
800 mm [31"] triple grouser track shoes	○
600 mm [24"] double grouser track shoes	○
700 mm [28"] double grouser track shoes	○
800 mm [31"] double grouser track shoes	○
Dozer blade	○

Working device

Boom 5680 mm	●
Arm 2910 mm	●
1.0 m³ reinforced bucket	○
0.9 m³ rock bucket	○
1.05 m³ reinforced bucket	○
1.0 m³ general purpose bucket	○
1.1 m³ general purpose bucket	○
24 inch trench bucket	○

Electronic system

Battery [2 x 950 CCA]	●
70 A AC generator	●
7.8 kW starter motor	●
5 V USB interface	●
Engine stop switch	●
Right-view camera	●
Rear-view camera	●
AM-FM radio with Bluetooth	●
DAB radio with Bluetooth	○
Travel buzzer with switch	●
Beacon lamp	●
2 LED cab-mounted front lights	●
1 LED cab-mounted rear light	●
2 LED boom-mounted lights	●
12 V power interface	●
Ceiling light	●

Counterweight

6 t counterweight	●
-------------------	---

Lubrication system

Automatic centralized lubrication System [all point]	●
--	---

Safety

Driving door locks and cabin locks	●
Alarm horn	●
Quick-coupler switch with buzzer	●
Isolation plate between engine and oil pump chamber	●
Battery circuit breaker	●
Overheat alarm	●
Safety handrails and pedals	●
Anti-skid plate/anti-skid paste	●
Hydraulic safety locking lever	●
left rear-view mirrors	●
Safety valves for boom cylinders	●
Safety valve for arm cylinder	●
Roll over protective structure [ROPS]	●
Operator protective guard [OPG]	●
Safety net on the front lower windshield	○
TOP guard bar	●
Front guard bar (Lower and Upper)	○

Standard: ●
Optional: ○

· Some of the standard or optional equipment may not be available for certain markets.
· Pictures may include attachments and optional equipment that are not available in your area.
· Materials and specifications are subject to change without advance notice.
· Please contact your local XCMG dealer for more information on availability or to customize your machine according to your application requirements.

Optimum Services, XCMG Guaranteed



XCMG-approved attachments



Genuine parts



Extension of warranty



Financial solutions



Maintenance contract



Telematics

Professional Integrated Complete Solutions

The XCMG group has built a strong reputation based on the quality, reliability and durability of its construction machinery. What's more, XCMG has gradually established a service network to constantly provide its local integrated and highly efficient complete solutions for all customers.



Full Range of Services Ready for you

In order to respond to your needs as fast as possible, XCMG experts are on their way to your job site from one of our facilities near you. A Full range of services is available in order to reduce your total cost of ownership and increase your revenue.

XCMG Global Spare Parts System



Mobile cranes



Excavators



Aerial work platforms



Wheel loaders



Road machinery

