



SOLID  
TO SUCCEED

# XC9260-EV

## ELECTRIC LOADER



SOLID TO SUCCEED



Operating weight	130000Kg
Rated load	11.5m <sup>3</sup>
Bucket capacity	26000kg

XC9260-EV is the self-innovated four-wheel independent electric wheel loader with operating capacity up to 26 tons; The independent development of critical technology makes us the leader of large loaders by breaking the monopoly of international competitors. Designed focus on reliability, efficiency, intelligent and maintenance etc., applicable to various conditions including large strip mines, loading mining trucks, and short-distance transportation, etc. The machine is the best option for 100-130 tons mining trucks.



XCMG core technology of “Intelligent electro-hydraulic proportional control system + electrical positive-flow hydraulic system + electrical load-sensing joy-stick steering system” to realize accurate and efficient compound actions during operations including loading, driving, and steering, etc.



Pure electrical extra-high-voltage drive system, with high transmission efficiency and fast response, has anti-skid, limp return, automatic protection and other special functions.



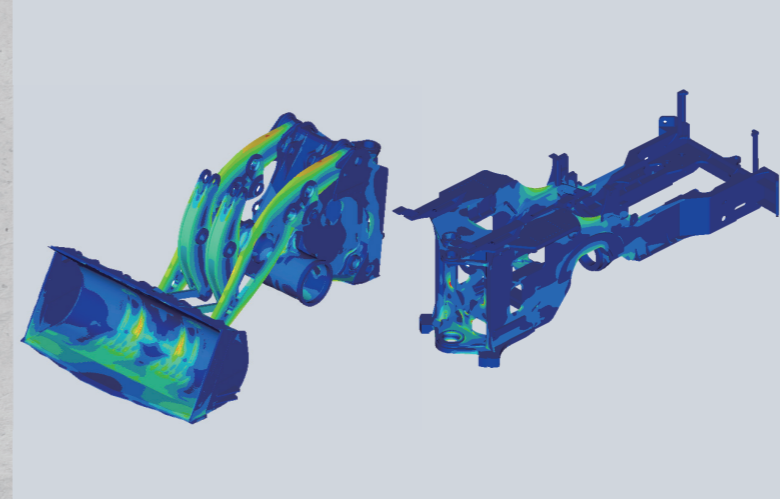
Braking energy recovery technology effectively recycles energy generated by the “integrated electro-hydraulic braking (EHB) which can be used to drive the wheel rim motor and reduce the abrasion of mechanical braking.



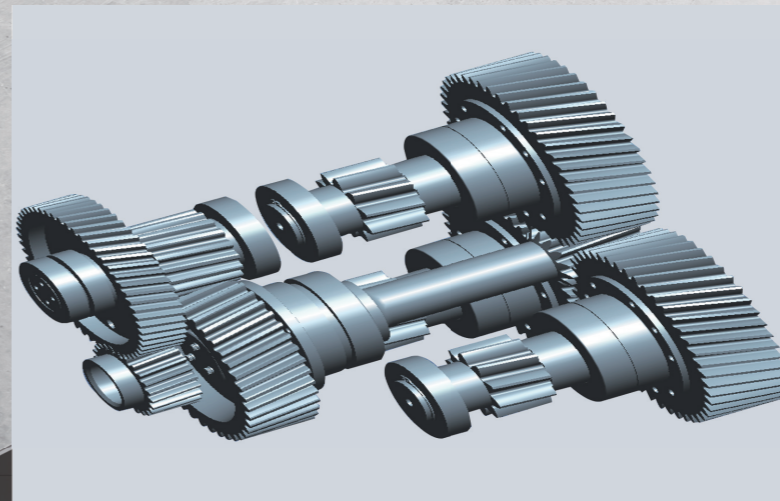
Intelligent man-machine interaction system featuring real-time, safe, easy, and fast monitoring and diagnosis of operation as well as the complete safety protection system.



# RELIABILITY



- Structural components by simulation design based on mining conditions, made of low temperature resistant and high-strength alloy steels, with high-strength casting for critical parts, featuring high loading capacity for torques and impacts under multiple working conditions.



- The hub reducer assembly consisted of multiple-stage planetary wheels featuring a high drive ratio and large torque.



- The high reliability multi-functional combination instrument equipped accurately monitors the running status of the engine and accurately reads the malfunctions of engine via CAN bus communication technology. With sound-light alarm and indication, the LCD screen accurately displays the running status of the whole machine.

# HIGH ENERGY-CONSERVATION AND EFFICIENCY

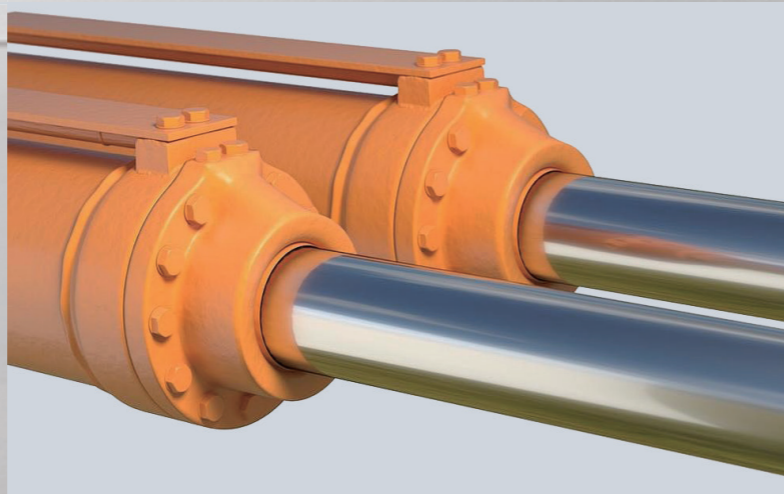
- Pure electrical extra-high voltage drive system has high transmission efficiency and fast response speed, saving more than 70% of energy consumption compared to the same-level hydraulic drive loaders.
- Equipped with Fast Charging Technology, 15%-100% only need 35 minutes.



- The electrical load-sensing joy-stick steering system can realize the accurate control of the machine and improve the comfort of the operator.
- The electro-hydraulic proportional integrated FNR joy-stick achieves intelligent control such as impact free, automatic positioning, automatic leveling, micro operation, and translational lifting, making it more energy-efficient and efficient.



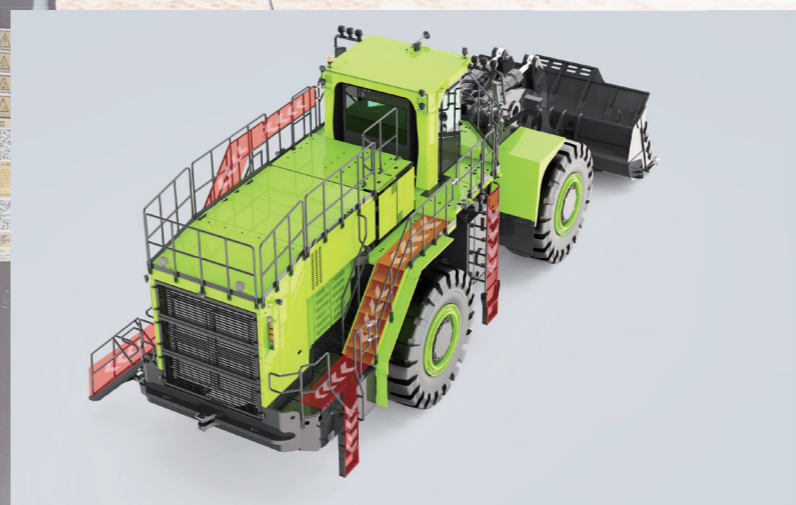
- The electrical positive-flow hydraulic working system, associated with constant-power control technology, has improved the energy conservation, fast response, and controllability of the hydraulic system and the efficiency of the combination process.
- Braking energy recovery technology effectively recycles energy generated by the "integrated electro-hydraulic braking (EHB) which can be used to drive the wheel rim motor and reduce the abrasion of mechanical braking.



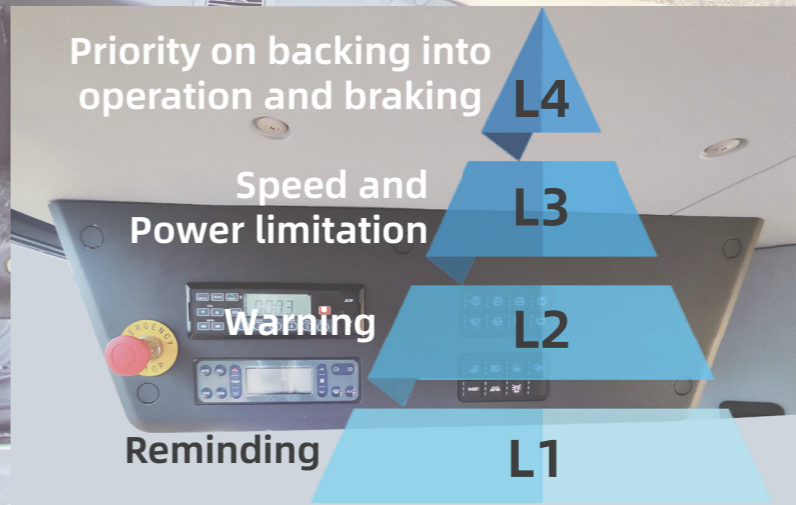
# HIGH COMFORT AND SAFETY



- XC9 series integrated and super-charged cab, complying with the requirement of ROPS&FOPS.
- Adjustable and air-suspension seats with high backrest featuring stream-line design and shock-absorption, configured with training seat.
- Equipped with dual brake pedals.
- Equipped with panoramic image to increase visibility and improve the safety of operation.
- Noise to the operator  $\leq 75\text{dB}$ .



- Left and right aisles with emergency exits with easy access.
- The increase of ride control ensures the equipment maintain a stable state while operating, free from external interference.
- Emergency standard steering system is equipped, which can be activated immediately in case of the invalidation of steering system, ensuring that the loader can be safely steered, reducing the risk of accidents and enhancing the safety of the work site.



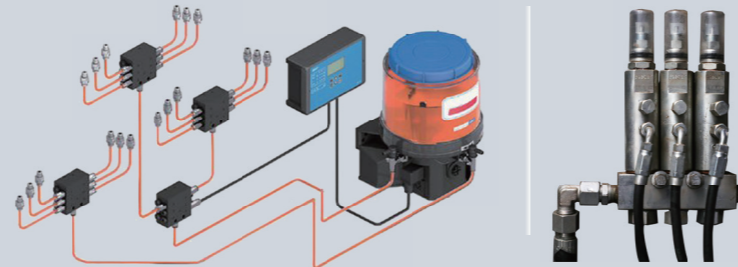
- 25 security oriented strategies have been developed, with L1-L4 levels of oriented security. Maintain braking priority at the highest level of L4, restart after malfunction, and restore the vehicle's power as soon as possible, ensure electric braking function.
- Equipped with 3 emergency stop and a power isolation switch to help stop the engine in an emergency.

# HIGH CONVENIENCE

- The machine is configured with multiple platforms and points for maintenance and the hood is designed with various rotary structures for easy maintenance and limited duration of shutdown required.
- 45° automatic ladder with three-point support for the operator with safety and comfort.



- The centralized lubrication system is to apply greases for articulated points and prevent the failure of the lubrication system due to the blocking of certain lubricating points.
- Integrated pressure test interface of the hydraulic system for easy detection and maintenance.



- Hydraulic oil with high efficiency.
- The centralized sampling of transfer case gear oil, engine oil, and hydraulic oil with easy operation.



# TECHNICAL PARAMETERS

## WHOLE PARAMETERS

Model	Parameter
Operating weight	130000Kg
Rated load	11.5m <sup>3</sup>
Bucket capacity	26000kg
Bucket breakout force	≥730kN
Tipping load	52000kg

## EIC SYSTEM

whole voltage platform	900V		
Electric Motor	Dalian Riqian Motor Co.,Ltd.		
Rated power	1540kW		
Battery Type	LiFePO <sub>4</sub>		
Battery capacity	1452.5KWH		
Hypobaric electric system	24V		
Hydraulic Motor	Amount	1	
	Type	Permanent Magnet Synchronous Motor	
Walking motor	Amount	4	
	Type	Three-phase asynchronous motor	
	Each rated Power	220kw	
Travel speed	Forward	1st	7.5km/h
		2nd	12km/h
		3rd	24km/h
	Reverse	1st	7.5km/h
		2nd	12km/h
		3rd	24km/h
Speed-Tyre type	45/65-45		
Wheel rim reduction ratio	95.61		
Charging power	3mW		
Charging time	35min (15%-100%(single gun))		

## CAB

CAB	FOPS&ROPS Certified; Equipped with One-Touch Start. Equipped with high power air-conditioning (cooling and heating), electrically adjustable +heated mirror, cooling and heating store space; Equipped with coach seat and electrically heated adjustable seat which have gasbag shock absorber and dump; Standard pressurized cab is equipped to ensure the cab cleanliness.
-----	-------------------------------------------------------------------------------------------------------------------------------------------------------------------------------------------------------------------------------------------------------------------------------------------------------------------------------------------------------------------------------

## BRAKES

Service Brakes	Four-wheel full hydraulic wet brake system is adopted, featuring excellent heat dissipation performance and reliable braking safety.
Parking Brake	
Emergency Brake	The cab is equipped with 3 emergency stop button on the inside and outside of the cab, which facilitates the engine shutdown in case of emergency and improves safety.

## HYDRAULIC SYSTEM

Type	Electronically controlled positive flow system
Pump	Electric hydraulic pump (variable displacement)
Rated flow	280+205+205ml
Control Valve	Electric bypass-valve
System Pressure	30mpa
Hydraulic Cylinder	Vertical cylinder
	Lift oil cylinder- 2*270*150-1680
	Tipping bucket oil cylinder - 2*240*130-1040
Total cycle time	≤17

## STEERING SYSTEM

Type	Load-sensing, electric handle steering
Pump	Load-sensing Pump
Rated oil Quantity	205ml
hydraulic oil cylinder amount	2
System Pressure	24mpa
Steering Angle	42°

## SOUND

Operator Sound Pressure Level (ISO 6396:2008)	75dB
-----------------------------------------------	------

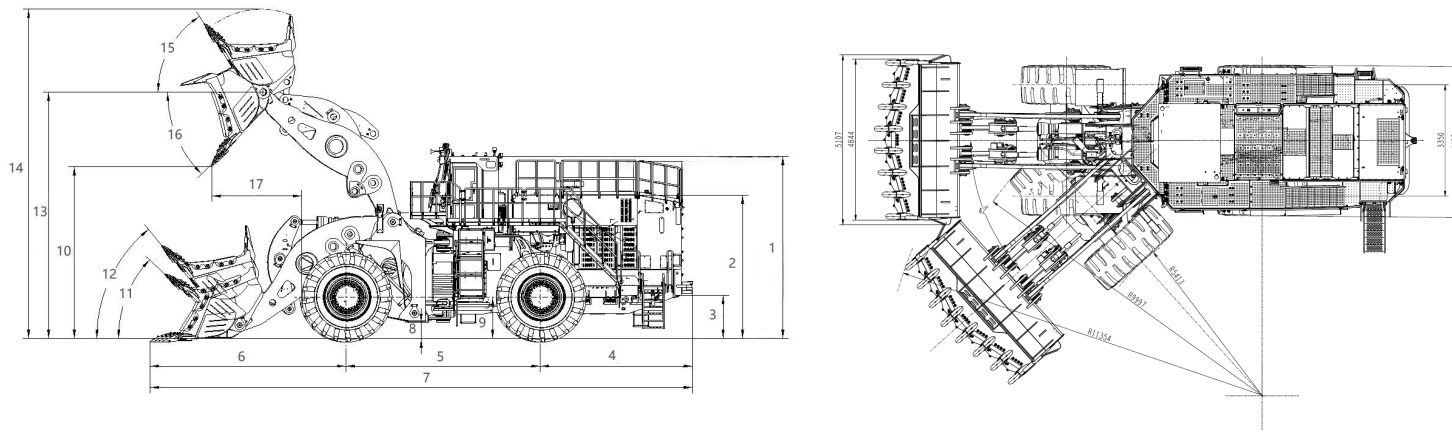
- Guaranteed noise level presented below can be differed depending on arrange of factors such as operating condition, speed of a cooling fan, types of engine and so forth. Hearing protection shall be necessary if an operator is working in the improperly maintained cabin or exposed to a noisy environment by leaving doors and/or windows open.

## SERVICE REFILL CAPACITIES

\*Reference Only, Filling volume is based on the actual scale.

Item	Summer	Winter	Filling capacity
Coolant	Delo ELC-55/45	Delo ELC-55/45	500L
Gear oil for wheel reductor	GL-5 80W/90 Gear oil for weight-load motor (Summer)	GL-5 75W/90 Gear oil for weight-load motor (Winter)	22L
Hydraulic Oil	L-VG46Anti-wear Hydraulic Oil	L-VG46Anti-wear Hydraulic Oil	820L

# TECHNICAL PARAMETERS



Type	Sizes and Specifications	Parameter
1	Ground to Top of Rollover Protective Structure (ROPS)	5537mm
2	Ground to Top of Hood	4358mm
3	Ground to Bumper Clearance	1310mm
4	Rear Axle Center Line to Bumper	4638mm
5	Wheel Base	5900mm
6	Front Axle Center Line to Bucket Tip	5246mm
7	Maximum Overall Length	15784mm
8	Ground to Lower Hitch Clearance	468mm
9	Ground to Center of Axles	1260mm
10	Clearance at Maximum Lift, at 45° Dump	4726mm
11	Rack Back Angle at Ground Level	45°
12	Rack Back Angle at Carry	51.1°
13	B-Pin Height at Maximum Lift	6985mm
14	Maximum Overall Height, Bucket Raised	9482mm
15	Rack Angle at Maximum Lift	61.6°
16	Dump Angle at Maximum Lift	-45°
17	Reach at Maximum Lift, at 45° Dump	2701mm

• Our product is still in the research and development process. In case the specifications or detailed appearance contained in this brochure differ from actual products, the latter shall prevail.  
 • XCMG reserves the right of final interpretation for the above. Our products may be modified without prior notice to users.

# OPTIONAL

	STD	OPT
Power train		
Parking brake	●	
Service brake (Enclosed wet-disc)	●	
Emergency stop	●	
Techking tyres	●	

	STD	OPT
Hydraulic system		
Bucket lift limit	●	
Automatic bucket leveling	●	
Diagnostic pressure fittings	●	
Hydraulic oil cooler	●	

	STD	OPT
Electrical system		
Working hour display	●	
Battery main switch	●	
Electric horn	●	
Brake	●	
High beams	●	
Turn signal	●	
LCD Screen	●	
2 Headlights	●	
1 LED dome light	●	
2 Rear combination lights (Reverse, turn signal, position, and brake lights)	●	
2 Front roof working lights (LED)	●	
2 Rear roof working lights (LED)	●	
Main light	●	
2 Working lights on rear hood	●	
Working light	●	
Rotating warning light	●	

	STD	OPT
Safety		
Rear view camera	●	
Fire extinguisher	●	

	STD	OPT
Cab & interior		
Weighing system	●	
Mirror heating		●
Rear wiper	●	
ROPS/FOPS Cab)	●	
RESPA Pressurized filtration system	●	
Coat hook	●	
Roller sunshade (Rear window)	●	
Magazine pouch		●
Radio/USB player	●	
Wrist supports and armrests	●	
24 V to 12 V DC converter (20 A)	●	
Door and cab lock, one key	●	
Air conditioner & heater	●	
3" Retractable seat belt & adjustable air suspension (heated)	●	
Air-suspending seat	●	
Cup holder	●	
Double brake pedal	●	
FNR gear	●	

	STD	OPT
Other		
Traction bar with pin	●	
Handrails / Ladders / Platforms / Steps	●	
Fenders (Front/Rear)	●	
Anti-corrosion spray	●	
Toolkit	●	
Self-lubrication system	●	

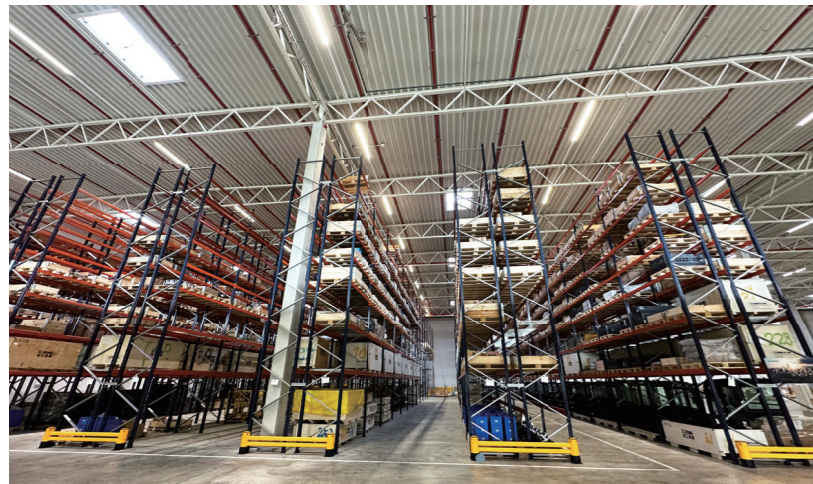
	STD	OPT
Bucket		
11.5m <sup>3</sup>	●	
11.5-14.5m <sup>3</sup>		●

# OPTIMUM SERVICES XCMG GUARANTEED



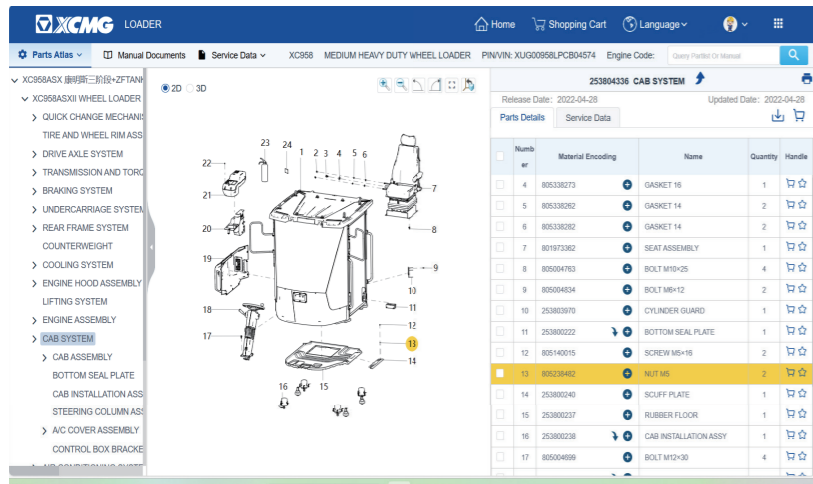
## Telematic information Processing

Remote Diagnosis. GPS terminal system monitors the construction state of the machine and the operating



## Professional Integrated Complete Solutions

XCMG group has built a strong reputation based on the quality, reliability and durability of its construction machinery. What's more, XCMG has gradually established a service network to constantly provide its local integrated and highly efficient complete solutions for all customers.



## Full Range of Services Ready for you

In order to respond to your needs as fast as possible, XCMG experts are on their way to your job site from one of our facilities near you. Full range of services are available in order to reduce your total cost of ownership and increase your revenue.



Plateau Construction



Forestry Construction



Plain Construction (Wheel Loader)



Road Construction



Stone Mining



Extreme Cold Working Condition



Mine Engineering



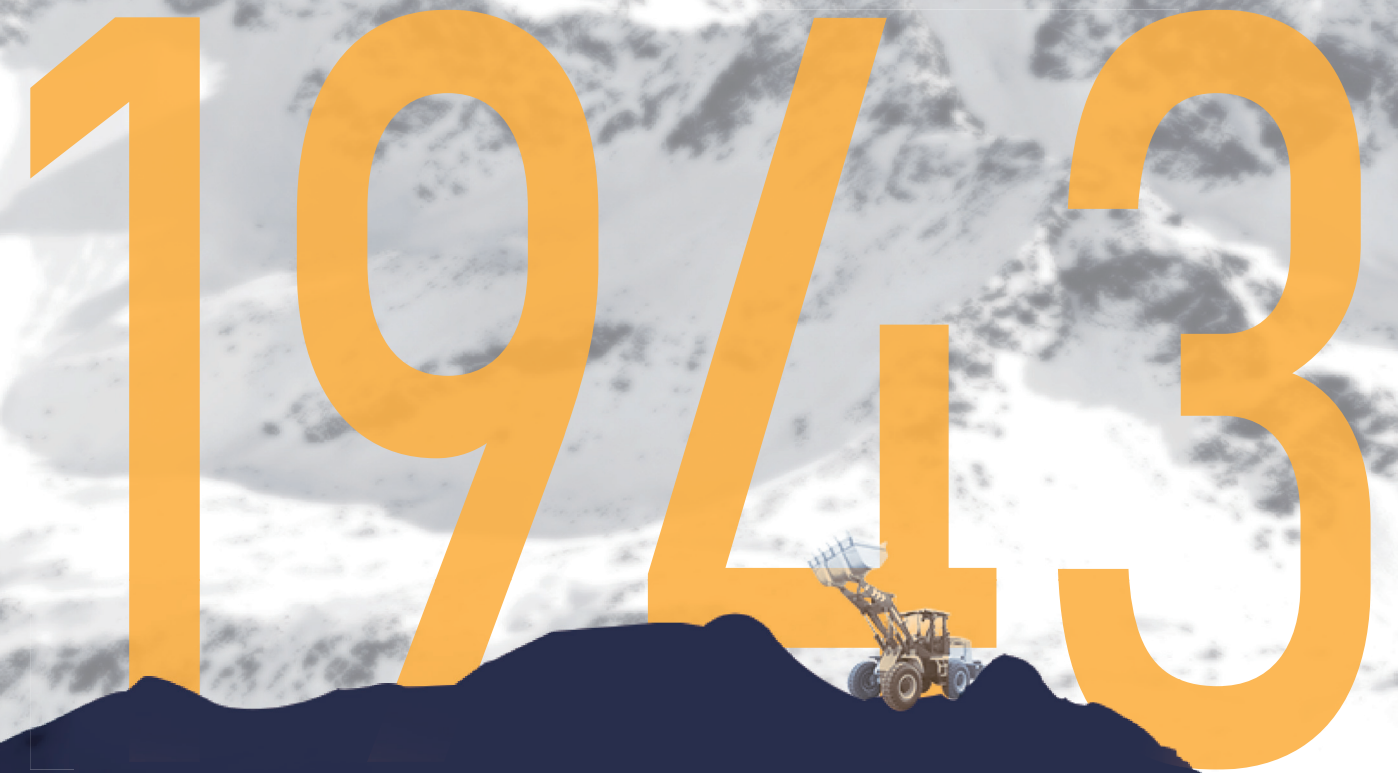
Mine Construction (Wheel Loader)

# Introduction

## Our Mission and Vision: Empower Solid Future.

XCMG was initially founded as the Huaxing Iron Factory in 1943 and was established as a group in 1989. Being a trailblazer walking through the hard days in a stern and steady manner, XCMG has taken the lead in development of Chinese construction machinery industry and become a billion-dollar leading enterprises with global competitiveness and influence. XCMG's performance retained its NO.1 position in China construction machinery industry and has achieved the ranking of NO.3 in the Global construction machinery industry for 3 consecutive years and has been listed in the "World Brand 500" for 4 consecutive years.

XCMG Earthmoving Machinery Division is one of the five major business divisions of XCMG. We are professionally dedicated in the R&D, manufacturing, sale and supporting service of 0.6-35tons full-series loaders, skid-steer loaders and backhoe loaders. In line with the business philosophy of facing the world, integrating the world and serving the world, XCMG Earthmoving Machinery Division takes the leading position in quality and value, and become the new benchmark in the high-end market of China earthmoving machinery industry.



1943

**TOP 3**

TOP 3 Global Construction Industry

**2000**

More than 2000 Service Terminals

**8500**

More than 8500 Valid Patents

**40**

More than \$4 Billion Annual Exports