

All Rights Reserved

Materials and specifications are subject to change without notice.
Featured machines in photos may include additional equipment.
See your XCMG dealer for available options.



BACKHOE LOADER XC8-S2570



XCMG European Sales and Services GmbH
Address: Europark Fichtenhain B 4,47807 Krefeld,
Deutschland
Tel: +49 (0) 2151 8206 890
Fax: +49 (0) 2151 8206 899
E-Mail: info@xcmg-ess.de

XUZHOU CONSTRUCTION MACHINERY GROUP IMP. & EXP. CO., LTD
Address: No.1, Tuolanshan Road, Xuzhou Economic Developing Zone, Jiangsu,
China 221004
Tel: + 86(0) 516 8773 9703
Fax: + 86(0) 516 8773 9230
E-Mail: europe@xcmg.com

www.xcmg.com/en-ap

XCMG FOR YOUR SUCCESS



315 Overseas Dealer

2234 Overseas Service & Spare Parts Center

42 Overseas Office

31 Overseas Subsidiary Company

15 Overseas Manufacturing Base & KD Factory

4 Overseas R&D centers

INTRODUCTION OF XCMG

XCMG, as a leading enterprise valued of 100 billion RMB, with the largest scale, the best technology level, the largest export volume, and high competitiveness and influence in China's construction machinery industry, has been occupying the first place in China's construction machinery industry for decades, and it now ranks the third in the world industry and the 395th among the world's top 500 brands.

The main products by XCMG consists of 16 categories of equipment such as hoisting machinery, excavation machinery, concrete machinery, mining machinery, earth-moving machinery and road machinery, etc., as well as three categories of key components such as hydraulic system, transmission system and electric control system. Among above-mentioned, hoisting machinery ranks first in the world, and package solution of road construction and maintenance machinery, piling machinery and concrete machinery are among the first-class bloc in the world.

XCMG has accumulated more than 8000 approved patents, including more than 1900 invention patents and more than 130 PCT international patents. Entities of R&D centers, manufacturing plants or KD factories are in operation in more than 10 countries such as Germany, the United States, Brazil and India, XCMG has also acquired three European enterprises including Schwing in Germany. The Brazil manufacturing plant, with an investment of 350 million dollars to build up factories on a bare ground, has become a model of economic cooperation between China and Brazil. At present, XCMG products are exported to 187 countries and regions, covering 97% of the countries along "The Belt and Road" area. In export business to 35 countries, XCMG's proportion ranks NO. 1, with a steady first place within Chinese industry in terms of annual export volume and overseas income.

XCMG IN EUROPE

Since 1990s when XCMG was already a known brand within the industry in Europe, XCMG has been one of the major international manufacturers supplying products and service across the Continent. With its rapid development in recent years, XCMG is gradually building up an all-round network including: R&D department; local distribution, supply chain management and an integrated customer services and training center.

At present, XCMG has 3 subsidiaries in operation, with more than 100 multinational employees in Europe:

- ERC XCMG European research center GmbH
- EPC XCMG European purchasing center GmbH
- ESS XCMG European sales and services GmbH

XCMG is also holding a resource of more than 100 branches by local dealers throughout the Europe, generating a whole value chain that is serving the entire European market, including sales, service, financing, used equipment recycle, etc.

We actively and continuously implement our globalization strategy. Our first-class international team has many years of professional experience and excellent cross-cultural management capability.

With a strong combination of expertise and practical experience in a multicultural context, we create real value and provide a high level of return on investment to our European customers.



- ▶ In accordance with the deep understanding of customer demands and based on the international research and development platform of XCMG, the XC8-S2570 backhoe loader is the product with an all-new design featuring higher reliability, environmental adaptability, safety, maintainability, controlability, and operating economy. The product is configured with an all-new large-vision driving cab to ensure the luxurious experience and high efficiency, which is the ideal choice for municipal engineering, road construction and maintenance, hydraulic engineering, emergency rescue.



Hydraulic system

- ◆ Variable load sensitive open hydraulic system, energy saving and high efficiency; steering priority to ensure work and driving safety; electro-hydraulic proportional control, high operation accuracy, easy to realize compound action, high work efficiency; excavation end control mode can easily perform SAE and ISO Switching of operating modes to adapt to the operating habits of different operators.

Loading work equipment

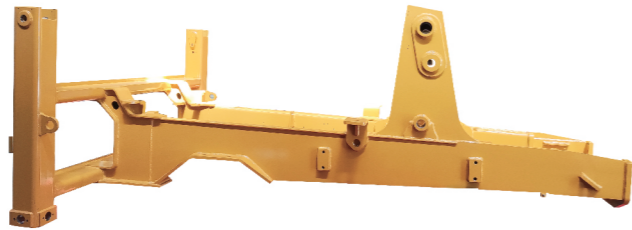
- ◆ The eight-link loading working device is adopted. The structure and hinge point are optimally designed. The structure is light and the strength is high. The breakout force is 66kN, which is excellent in the same type of products, with automatic leveling function, high work efficiency.

Excavation work equipment

- ◆ The excavation working device adopts the form of straight arm, the excavation rotation angle is 180° , it has excellent excavation depth and excavation radius, and the excavation range is wide; the excavation force can reach 63kN, which is highly efficient.
- ◆ V-shaped bucket, dredging bucket, wide bucket and other types and sizes of buckets improve the working adaptability of the whole machine.

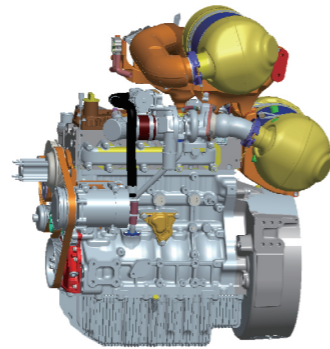
Frame

- ◆ The overall frame is reasonable in arrangement and reliable in structure. The main structure adopts high-strength steel plate, which reduces profile and irregular welds, strengthening important load-bearing parts, which can withstand torsion and impact loads under various complex working conditions, with excellent performance.



Engine

- ◆ The internationally renowned engine of Perkins is used, with good power performance, large torque reserve and low fuel consumption rate; the emission meets the requirements of the EU STAGE V standard; with low noise and low emission, the whole machine meets the high-demanding green environmental protection requirements.



Drive Axle

- ◆ The special drive axle of XCMG transmission is adopted, and the tires of large size, high level and heavy duty are adopted, which improves the working capability in harsh environment.



Excavating work equipment

- ◆ The excavation working device adopts the form of straight arm, the excavation rotation angle is 180°, it has excellent excavation depth and excavation radius, and the excavation range is wide; the excavation force can reach 63kN, and the work is efficient.
- ◆ V-shaped bucket, dredging bucket, wide bucket and other types and sizes of buckets improve the working adaptability of the whole machine. The XC8-S2570 backhoe loader can be equipped with a six-in-one bucket, closed sweeper, fork, boom, angle sweeper, wood grabber, snow blade, tree mover, manhole cover milling machine, loading end hydraulic quick-coupler, auger, hammer, ripper, hydraulic quick-coupler at the excavation end and other different working tools to meet the needs of different working conditions.

Maintainability

- ◆ The main maintenance parts, oil level inspection, oil filling and grease filling and other maintenance points are arranged in the easy-access positions, which is convenient for maintenance.
- ◆ The whole rear-turned hood has a large opening angle, so that the engine and cooling system are completely exposed, and inspection and maintenance can be easily realized.

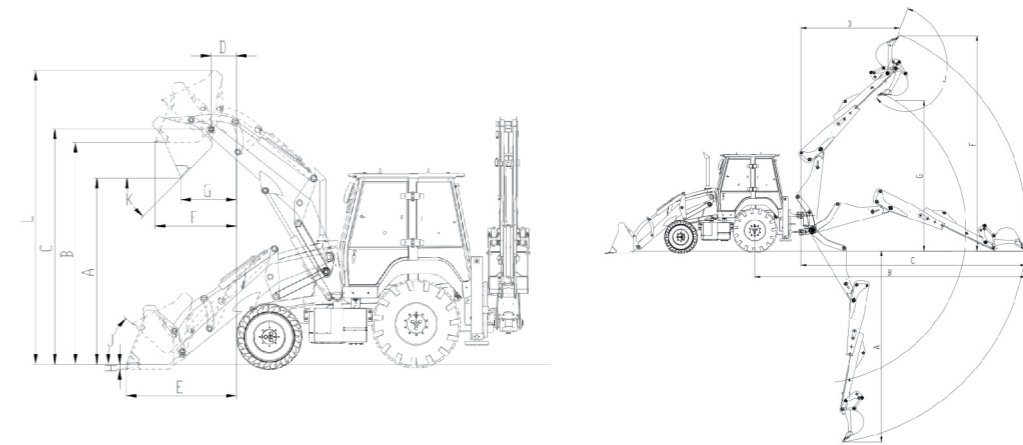


Cab

- ◆ The rollover prevention (ROPS) and falling object prevention (FOPS) two-in-one cab that meets the safety standards ensures the safety of the whole machine.
- ◆ The interior space is spacious and the operating vision is good.
- ◆ The cab is designed according to the principle of ergonomics, and all the instruments are arranged in the operator-friendly positions parts, all button switches are within easy reach, and the operation is convenient and safe.
- ◆ The air-conditioning vents are optimally arranged, and the operating environment is comfortable.



Ca Overall dimensions



Main specifications

Description	Specifications	Unit
Rated power and speed of the engine	74.5/2200	kW/(r/min)
Overall length	5915	mm
Overall width	2508	mm
Overall height	3682	mm
Operating weight	8600	kg
Max. driving speed	38	km/h
Max. gradeability	≥20	°
Turning radius	4400	mm
Wheelbase	2200	mm
Maximum traction force	≥70	kN
Rated capacity of the bucket	1.0	m ³
Rated operating load	2500	kg
Maximum breakout force	66	kN
Maximum dumping height	2827	mm
Max. unloading distance	864	mm
System pressure	24	MPa
Rated capacity of backhoe bucket	0.2	m ³
Maximum digging radius	7004	mm
Maximum digging depth	5619	mm
Maximum breakout force	63	kN
System pressure	24	MPa

Optimum Services, XCMG Guaranteed



XCMG-approved attachments



Genuine parts



Extension of warranty



Financial solutions



Maintenance contract



Telematics

Professional Integrated Complete Solutions

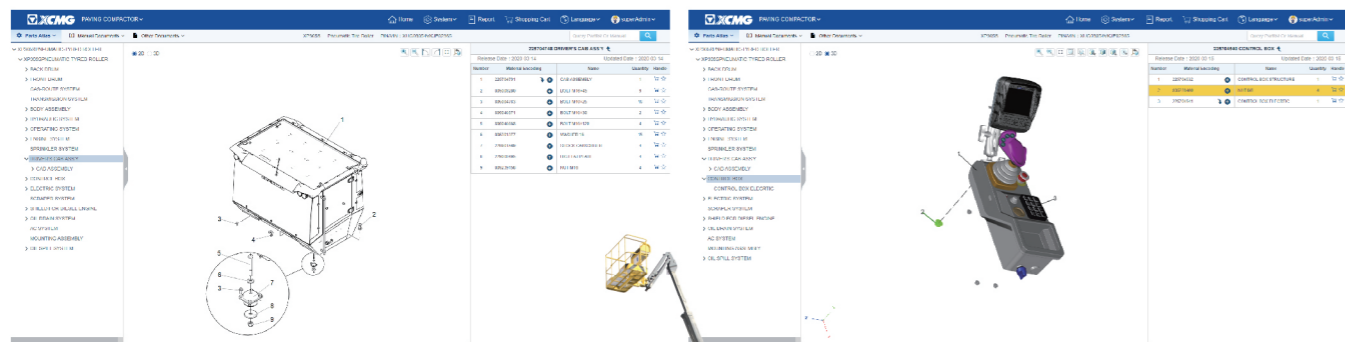
The XCMG group has built a strong reputation based on the quality, reliability, and durability of its construction machinery. What's more, XCMG has gradually established a service network to constantly provide its local integrated and highly efficient complete solutions for all customers.

Full Range of Services Ready for you

In order to respond to your needs as fast as possible, XCMG experts are on their way to your job site from one of our facilities near you. A full range of services is available in order to reduce your total cost of ownership and increase your revenue.



XCMG Global Spare parts System



Mobile cranes



Excavators



Aerial work platforms



Wheel loaders



Road machinery

