

# XC8-S0750

**XCMG**  
BACKHOE  
LOADER

**SOLID TO SUCCEED**



**XCMG EARTHMOVING MACHINERY  
BUSINESS DIVISION**

CUSTOMER SERVICE  
HOTLINE (IN CHINA): **400-110-9999**

ADDRESS: NO. 99, KUNPENG NORTH ROAD, XUZHOU ECONOMIC  
DEVELOPMENT ZONE, JIANGSU PROVINCE, CHINA  
ZIP CODE: 221004  
TEL: 0516 87938888  
EMAIL: sales@xcmg.com  
SITE: <http://www.xcmg.com>

2023-11



1. Scan the QR code to follow "XCMG Loading Machinery"  
2. Click the "Loader King" in the lower left corner to obtain  
more product details after registration.



## About XCMG

As a 100 billion-level leading company renowned for the largest scale, the most advanced technology, the largest export volume, and the highest competitiveness and influence in China's construction machinery industry, Xuzhou Construction Machinery Group Co., Ltd. (XCMG) not only has dominated the Chinese market for decades, but also is committed to expanding its worldwide presence as the third largest supplier in this field and 395th of Global 500.

The product portfolio offered by XCMG covers 16 categories such as hoisting machinery, excavation machinery, concrete machinery, mining machinery, earthmoving machinery, and road construction machinery, as well as three key components, i.e., hydraulic systems, transmission systems and electrical control systems. In these areas, our hoisting machinery ranks first in the world, and our complete solutions for road construction and maintenance machinery, piling machinery and concrete machinery also take the leading position in global rankings.

XCMG has been granted more than 8,000 patents in total, including more than 1,900 invention patents and more than 130 international PCT patents.

We have established our own R&D centers, manufacturing plants or KD factories in more than 10 countries, e.g., Germany, USA, Brazil and India, and have acquired 3 European companies including Schwing from Germany.

The manufacturing factory in Brazilian, which is built on a barren land with an investment of USD 350 million, has become a successful model of China-Brazil economic cooperation. At present, our products are exported to 187 countries and regions, covering 97% of the countries along the "Belt and Road". XCMG takes the largest share of the business exported to 35 countries, with the annual export volume and overseas revenue remaining in first place and outperforming all other competitors in China.





## Drivetrain system

- Utilizing the Perkins engine, the world-class brand, featuring excellent power performance, large torque reserves, less fuel consumption, reduced noise, and low emission certified according to the EPA T4F standard. The whole machine complies with even more stringent green environmental standards.
- The transmission system features a Danfoss travel pump and a Poclain motor, combined with a closed hydraulic system for stable performance. It incorporates electro-hydraulic proportional control, providing easy and efficient operation while ensuring high safety and economy.



## Hydraulic system

- The variable load-sensitive open hydraulic work system is energy-efficient and precise, with electro-hydraulic proportional control that allows for easy execution of complex actions, resulting in high work efficiency. The excavation control mode can effortlessly switch between SAE and ISO operating modes, accommodating the preferences of different operators.



## Loading work device

- Utilizing an eight-link loading work device, engineered with optimized structural design and pivot points. The structure is lightweight, yet exhibits high strength. It demonstrates remarkable digging force, outperforming similar products in its category. During the lifting process, minimal changes occur in the bucket angle, ensuring excellent maneuverability. It includes an automatic leveling feature, resulting in high work efficiency.



## Digging work device

- The digging work device adopts a straight-arm configuration, providing a 180° swing angle. It offers exceptional digging depth and a broad excavation radius, catering to a wide range of digging needs. It boasts substantial digging force, ensuring efficient operations.



## Frame

- The split frame is reasonably arranged and designed with a reliable structure. The main structure is made of high-strength steel plates, to minimize pressed profile and irregular welds, reinforce load-bearing parts, and perfectly withstand torsion and impact loads under various complex operating conditions.



## Cab

- A safety-compliant Rollover Protective Structure (ROPS) and Falling Object Protective Structure (FOPS) integrated cab, ensuring overall operational safety. It provides a good internal operational visibility. Designed according to human engineering principles, all instruments are positioned for easy observation, and all button switches are easily reachable, ensuring safe and convenient operations. Optimally positioned air vents enhance the operating environment's comfort.



## Electrical system

- CAN bus wiring design ensures reliable and efficient data transmission. LCD displays on the front and sides allow for easy monitoring of the overall machine's status.
- The cab's front is equipped with both long and short-range headlights, while both the front and rear sides feature two work lights each, providing adequate illumination for nighttime operations and the working area of associated equipment.



## Maintainability

- All major maintenance and servicing components, including oil level checks, fluid replenishment, and lubrication grease application points, are conveniently located in easily accessible areas, ensuring straightforward and convenient maintenance and upkeep.
- A split-type rear-flip engine hood, with a wide opening angle, fully exposes the engine, cooling system, and more, facilitating easy inspection and maintenance.



## Versatility

- The XC8-S0750 digging loader offers optional attachments including a six-in-one bucket, enclosed sweeper, forks, auger, breaker hammer, and loosening tool, among various other tools, meeting different operating conditions.

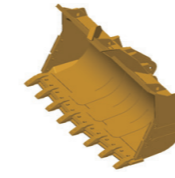


## Exterior

- Featuring proprietary designs for the cab and engine hood, ensuring a coordinated appearance that incorporates XCMG design elements, thereby enhancing the machine's overall recognition.

## Main components

Item	Unit	Parameter	Item	Unit	Parameter					
Dimensions	Overall length	mm	3760	Digging parameters	Bucket rotation angle	°	203			
	Overall width	mm	1612		Max digging radius	mm	3610			
	Overall height	mm	2300		Max digging depth	mm	2755			
	Cab height	mm	2300		Loading height	mm	2418			
	Wheel base	mm	1182		Max digging height	mm	5308			
	Frame ground clearance	mm	190		Bucket digging force	kN	25			
	Width (outside of front wheel)	mm	1306		Arm digging force	kN	15			
	Width (outside of rear wheel)	mm	1306		Rotation angle	°	180			
					Bucket capacity	m <sup>3</sup>	0.06			
Loading parameters	Operating weight	kg	3300	Engine	Model	—	404J-E22T			
	Max tractive force	kN	≥24.5		Manufacturer	—	Perkins			
	Max gradeability	°	≥20		Rated power	kW	45			
	Turning radius (outside of front wheel)	mm	1235		Rated speed	r/min	2800			
	Turning radius (outside of bucket)	mm	2200		Max torque	N.m	222			
	Digging depth for loading	mm	93		Displacement	L	2.2			
	Rollback angle	°	42	Emission standard	—	T4F				
	Loading parameters	Max dumping height	mm	2220	Drive system	Travel pump	Model	—	ZPB45380D380240EPR	
		Dumping range at max dumping height	mm	595			Manufacturer	—	Danfoss	
		Dumping angle	°	45			Max forward speed	km/h	12	
Max working height		mm	3445	Max reverse speed			km/h	12		
Loading parameters		Max bucket pin height	mm	2886	Hydraulic system	Service pump	Front tyre model	—	10-16.5	
		Rated load	kg	700			Rear tyre model	—	10-16.5	
		Loading parameters	Bucket breakout force	kN	29	Hydraulic system	System pressure	Type	—	Open
			Boom breakout force	kN	17			Type	—	Variable displacement piston pump
			Lifting capacity at max lifting height	kg	2000			Maximum flow	L/min	50
			Bucket capacity	m <sup>3</sup>	0.36			Loading system	bar	220
	Loading parameters		Total cycle time	s	≤10	Digging system	bar	220		
						Fuel tank capacity	L	45		
					Hydraulic oil tank capacity	L	36			



XCMG approved attachments



Genuine parts



Financial solutions



Maintenance contract



Telematics

## Professional Integrated Complete Solutions

XCMG has built a strong reputation based on the quality, reliability and durability of its construction machinery. What's more, XCMG has gradually established a service network to constantly provide its local integrated and highly efficient complete solutions for all customers.

## Full Range of Services Ready for you

In order to respond to your needs as fast as possible, XCMG's experts are on their way to your job site from one of our facilities near you. Full range of services are available in order to reduce your total cost of ownership and increase your revenue.



## XCMG Global Spare Parts System



- The technology of XCMG loader is subject to constant improvement and upgrading. In case the specifications or detailed appearance contained in this brochure differ from actual products, the latter shall prevail;
- XCMG reserves the right of final interpretation for the above. Our products may be modified without prior notice to users.