

RP355i



RP355i

Paver

RP355i Paver is a kind of mini-type crawler paver with working width of 0.5~3.2m. Compact machine structure offers flexible application. Full hydraulic drive and smart electrical system are incorporated to provide stable performance and high reliability. It is applicable for backfilling of road surface milling slot and gully, urban non-motorized lane construction, road construction in island and tourist attractions, garden landscape, community road construction and stadium construction, as well as special application for indoor and high-limit construction.

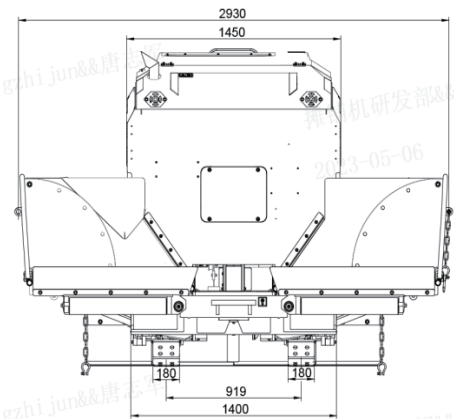
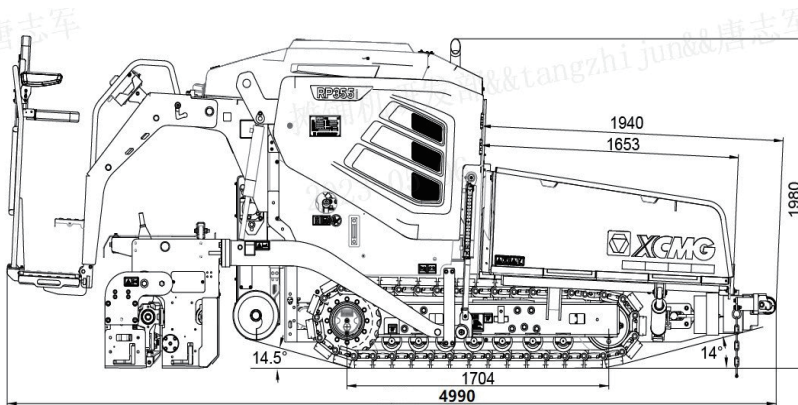
Performance and characteristics

- Compact machine structure offers flexible application. The 1.45m width and less than 2m height of the machine fulfills application in low and narrow working conditions. Maximum 3.2 meter and minimum 0.5 meter can be achieved with width limit device, suitable for a variety of working conditions and differentiated needs of customers.
- Full hydraulic independent drive with load sensing control technology,

allowing efficient, energy saving power output; Danfoss drive components provide reliable and stable performance.

- Kubota water-cooled turbocharged electric diesel engine (55.4kW/2200rpm) is equipped with sufficient power reserve, good atomization of diesel, good economy, low noise, long life and wide application range.

Main dimensions



Main specifications

Item	Unit	Value
Basic paving width	m	1.1~2.0
Max. paving width	m	3.2
Max. paving thickness	mm	200
Working speed	m/min	0~30
Travel speed	km/h	0~3.6
Theoretical productivity	t/h	300
Hopper capacity	t	5.8
Gradeability	%	20
Evenness	mm/3m	3
Crown adjustment range	%	-2~+4
Diesel engine power	kW	55.4
Diesel engine speed	r/min	2200
Conveying speed	m/min	0~25
Distributing speed	r/min	0~70
Tamper speed	r/min	0~1500
Vibration frequency	Hz	0~50
Overall dimension	mm	4990×1450×1980
Total weight	t	7.5
Diesel tank volume	L	100
Hydraulic tank volume	L	80