

LW180KE



WHEEL LOADER

SOLID TO SUCCEED



**XCMG EARTHMOVING MACHINERY
BUSINESS DIVISION**

CUSTOMER SERVICE
HOTLINE (IN CHINA): **400-110-9999**

ADDRESS: NO. 99, KUNPENG NORTH ROAD, XUZHOU ECONOMIC
DEVELOPMENT ZONE, JIANGSU PROVINCE, CHINA
ZIP CODE: 221004
TEL: 0516 87938888
EMAIL: sales@xcmg.com
SITE: <http://www.xcmg.com>

2023-08



1.扫描关注“徐工装载机二维码”
2.点击注册左下角“装载机之王”，了解更多产品详情



About XCMG

As a 100 billion-level leading company renowned for the largest scale, the most advanced technology, the largest export volume, and the highest competitiveness and influence in China's construction machinery industry, Xuzhou Construction Machinery Group Co., Ltd. (XCMG) not only has dominated the Chinese market for decades, but also is committed to expanding its worldwide presence as the third largest supplier in this field and 395th of Global 500.

The product portfolio offered by XCMG covers 16 categories such as hoisting machinery, excavation machinery, concrete machinery, mining machinery, earthmoving machinery, and road construction machinery, as well as three key components, i.e., hydraulic systems, transmission systems and electrical control systems. In these areas, our hoisting machinery ranks first in the world, and our complete solutions for road construction and maintenance machinery, piling machinery and concrete machinery also take the leading position in global rankings.

XCMG has been granted more than 8,000 patents in total, including more than 1,900 invention patents and more than 130 international PCT patents.

We have established our own R&D centers, manufacturing plants or KD factories in more than 10 countries, e.g., Germany, USA, Brazil and India, and have acquired 3 European companies including Schwing from Germany.

The manufacturing factory in Brazilian, which is built on a barren land with an investment of USD 350 million, has become a successful model of China-Brazil economic cooperation. At present, our products are exported to 187 countries and regions, covering 97% of the countries along the "Belt and Road". XCMG takes the largest share of the business exported to 35 countries, with the annual export volume and overseas revenue remaining in first place and outperforming all other competitors in China.



- The joint adopts double sealing form of 24 °cone and sealing ring, which has better and reliable sealing performance, the pipeline is arranged in a centralized way, and the trend is more reasonable.
- The EU stage V YUCHAI engine has strong power with higher efficiency. Electronic control unit pump has good economy. The engine has low noise, excellent oil heat dissipation effect, high efficiency, truly achieve energy conservation and environmental protection.
- The reinforced heavy duty drive axle can meet the needs of various high strength and heavy load operations.
- Through CAE software analysis, the working device can meet the requirements of effective breakout under heavy load conditions. The specially designed bucket can insert into the pile more easily and labor-saving. The use of wear-resistant material greatly increases the service life of the bucket.
- Optimized lightweight front and rear frame with reliable strength.
- Circular glass cab, beautiful and generous, wide field of vision, large space operation ,very comfortable.
- Centralized fuse box, oil level check, oil filling & grease filling point lead to facilitate maintenance.
- A variety of attachments are optional, suitable for a variety of operating conditions.
- Based on the advantages of K series, LW180KE loader is a new economical and cost-effective product upgraded by EU stage V power. The whole machine is improved in reliability, comfort, maintainability, maintenance, and safety.

Reliability



- The front and rear frame adopts CAE structural optimization analysis, plate utilization rate and the structural strength is improved to meet various working conditions.
- Wear resistance and lubrication of new materials, new methods to use, greatly improve the life.
- Hydraulic steel pipe joint sealing is fully upgraded, more reliable.
- The counterweight adopts four point fixed, more safe and reliable.



Comfort

- Large cab space, full glass, no visual obstacle.
- Luxurious interior, good sealing, noise fatigue is greatly reduced.
- Shading board, high-grade seats, standard electric fan, comfortable operation, improve work efficiency.



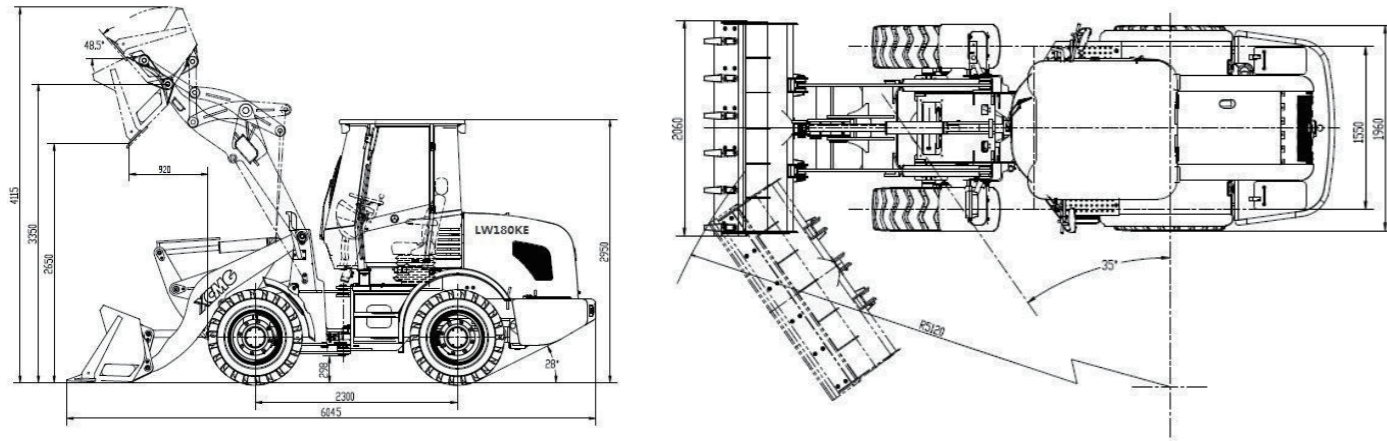
Safety

- The radiator cover is fully upgraded to avoid falling off and losing.
- The water tank air hood is fully designed to avoid injury accidents caused by fans.
- The cab is equipped with a fire extinguisher to prevent fire.
- Ladder and handrail size, man-machine principle design, so that operators feel safe.
- The rear-view mirror in the cabin is changed from flat to spherical, increasing the wide Angle of the field of vision.
- The machine is equipped with reflective stickers to avoid accidents in dark conditions.



Maintenance

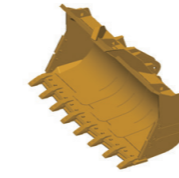
- Core and important electrical parts (controller, power main switch, relay, etc.) are installed inside the cab, with better dustproof, waterproof and seismic effect.
- Centralized fuse box, plug-in fuse, convenient for inspection and maintenance.
- The engine fault diagnosis indicator is added to the instrument panel to facilitate real-time monitoring of engine working status.
- The open Angle of the rear engine cover is large, the engine and water tank are completely exposed, and it is convenient to repair and replace parts.
- Tank drain valve and engine drain port are separately led out, saving time and convenient operation.
- The position of the brake booster cylinder is changed from one installed in the front frame and one in the rear frame to two installed in the front frame, which is easy to observe the brake fluid amount and repair the booster cylinder.
- Air filter added pre-filter, installed in the upper part of the hood, easy maintenance.



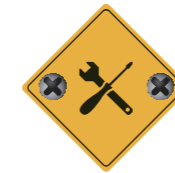
The main technical parameters

Item	Specifications		
Rated bucket capacity m ³	1.1		
Rated load kg	1800		
Operating weight kg	6200 (1.1 cube bucket, standard boom)		
STD Bucket m ³	STD BOOM	High BOOM	Super high BOOM
Unloading height mm	2680	2950	3295
Dumping distance mm	900	1000	1510
Wheel base mm	2300		
Wheel tread mm	1550		
Overall Length mm	6045		
Overall Height mm	2950		
Overall Width mm	2060		
Max breakout force kN	55		
Max traction force kN	48		
Outside tire center (turning radius) mm	4470		
Boom lifting time s	≤5		
Total cycle time s	≤9		
Engine	Model No	YCF3675-S580(36A5L0)	
	power/rated speed kW/rpm	55.8/2200	
Tire specification	16/70-20		
Driving speed km/h	Forward	1 st gear 0 ~ 10 2 nd gear 0 ~ 28 km/h	
	Backward	1 st gear 0 ~ 10 2 nd gear 0 ~ 28 km/h	

• Mark: Configuration: YUCHAI EU-V Engine+XCMG gearbox+dry axle+Pilot triple hydraulic system+A/C



XCMG approved attachments



Genuine parts



Financial solutions



Maintenance contract



Telematics

Professional Integrated Complete Solutions

XCMG has built a strong reputation based on the quality, reliability and durability of its construction machinery. What's more, XCMG has gradually established a service network to constantly provide its local integrated and highly efficient complete solutions for all customers.

Full Range of Services Ready for you

In order to respond to your needs as fast as possible, XCMG's experts are on their way to your job site from one of our facilities near you. Full range of services are available in order to reduce your total cost of ownership and increase your revenue.



XCMG Global Spare Parts System

