



S a n y M a r i n e

MATERIAL HANDLING MACHINE



QUALITY CHANGES THE WORLD



► Contents

MATERIAL HANDLING MACHINE

SMHW30	8
SMHW30G5	10
SMHC35	12
SMHW40	14
SMHW40G	16
SMHW40-E	18
SMHC45V	20
SMHW48V	22
SMHW48G5	24
SMHW48V-D	26
SMHC50V-D	28
SMHC70	30
SMHW80	32
SMHC100	34
SMHC160	36
Attachments	38
Construction Cases	40

- ▶ SANY Marine launched its first material handler in 2018, with total sales over 900 units. The product line includes 30 to 200 tons, with both wheeled and crawler chassis options.



MATERIAL HANDLING MACHINE

▶ Wheel Type



SMHW30



SMHW40



SMHW48V



SMHW80

▶ Crawler-Type



SMHC35



SMHC45V



SMHC50V-D (Towing Power)



SMHC70



SMHC100



SMHC160

SMHW30G5

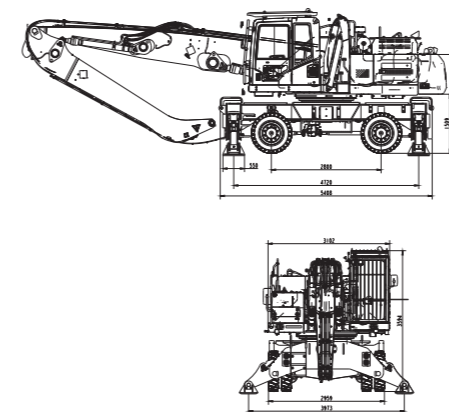


- Cummins engine, strong power
- Reinforced undercarriage, stable and safe
- Fits scrap, wood, recycling scenarios

Product Parameters

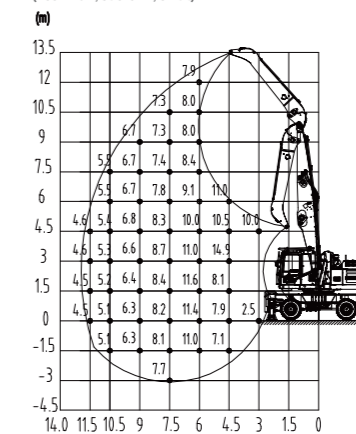
Technical Parameter				Configuration Parameter					
ITEM		UNIT	SMHW30G5	CONFIGURATION		UNIT	SMHW30G5		
Power System	Engine	Model	-	CumminsL6.7	Slewing Gear	Max. Rotating Speed	rpm	8	
		Rated Power	kw/rpm	145/2000					
		Torque	Nm/rpm	847/1500	Cabin	Cabin Lift Height	mm	2650	
		Emission	-	EU stage V					
		Oil Tank Capacity	L	465					
Chassis System	Track Width	mm	2387	Basic Parameters	Boom Configuration	m	12	14	
	Wheel Base	mm	2800				m	Boom 7.3	Boom 8.6
	Support Width(lengthways)	mm	4720			m	Stick 5.1	Stick 5.6	
	Support Width(crosswise)	mm	3973						
	Turning Radius	mm	3146			Max. Operating Radius	m	12	13.5
	Max. Gradeability	%	35						
Max. Travelling Speed	km/h	20	Max. Operating Height	m	12	13.5			
Type Of Control	-	Electronically Controlled Positive Flow System					Max. Operating Depth	m	-3
Hydraulic System	Main Pump	Rated Flow	L/min	2×260	Max. Operating Radius (Grab Not Included)	t			
							Max. System Pressure	MPa	32
	Hydraulic Oil Tank	L	230						

Dimensions

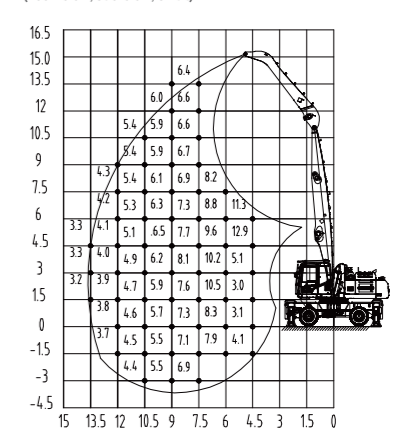


Scope Of Work

SMHW30G5 Lift capacities of material handler (Boom 7.3m, Stick 5.1m, Unit-t)



SMHW30G5 Lift capacities of material handler (Boom 8.6m, Stick 5.6m, Unit-t)



SMHC35



- Load-sensing system, 10% fuel savings

- Efficient engine-pump coordination

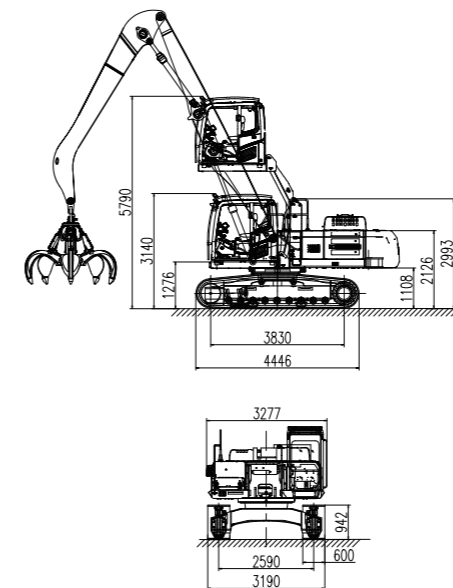
- Auto-idle & throttle control

- 300ms response, 200t/h throughput

Product Parameters

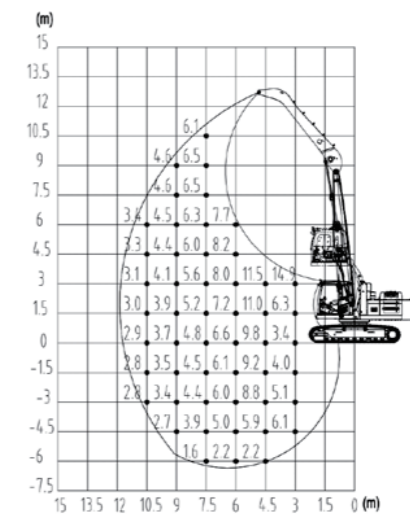
Technical Parameter					Configuration Parameter			
ITEM		UNIT	SMHC35		CONFIGURATION		UNIT	SMHC35
Power System	Engine	Model	-	Mitsubishi D06FRC	Hydraulic System	Max. System Pressure	MPa	34.5
		Rated power	kW/rpm	147/2100		Hydraulic Oil Tank	L	230
		Torque	Nm/rpm	750/1350	Slewing Gear	Max. Rotating Speed	rpm	8
		Emission	-	com III		Cabin	Cabin Lift Height	mm
		Oil Tank Capacity	L	465				m
Traveling Gear	Track width	mm	2590			Boom Configuration	m	Boom 6.8
	Wheel Base	mm	3830				m	Stick 5.6
	Track Width	mm	600		Basic Parameters	Max. Operating Radius	m	10.5
	Max. Travelling Speed	km/h	5			Max. Operating Height	m	10.5
Hydraulic System	Type Of Control	-	Electronically Controlled Positive Flow System		Max. Operating Depth	m	-6	
	Main Pump	Rated Flow	L/min	2×260	Max. Operating Radius (Grab Not Included)	t	3.4	

Dimensions



Scope Of Work

SMHC35 Lift capacities of material handler
(Boom 6.8m, Stick 5.6m, Unit:t)



SMHW40



▪ 20% less fuel than 48t model

▪ Modular boom, longer fatigue life

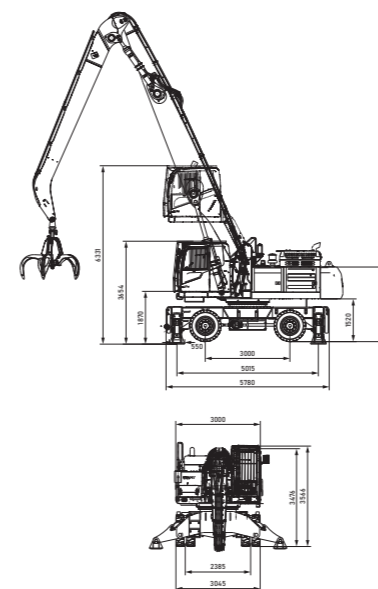
▪ Auto-dust cooling with reversible fan

▪ Heated suspension seat, 50% less vibration

Product Parameters

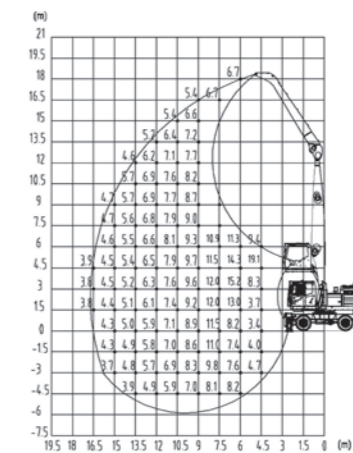
Technical Parameter				Configuration Parameter					
ITEM		UNIT	SMHW40	CONFIGURATION		UNIT	SMHW40		
Power System	Engine	Model	-	Deutz D09S3	Hydraulic System	Max. System Pressure	MPa	34.5	
		Rated Power	kw/rpm	180/2000					
		Torque	Nm/rpm	1200/1100~1400	Cabin	Cabin Lift Height	mm	2650	
		Emission	-	COM III					
		Oil Tank Capacity	L	560					
Chassis System	Trackwidth	mm	m	Basic Parameters	Boom Configuration	m	17	m	Boom 9.8
	Wheel Base	mm	3830						
	Support Width(lengthways)	mm	600						
	Support Width(crosswise)	mm	5						
	Turning Radius	mm	600	Stick 7.5					
	Max.Gradeability	%	5						
Hydraulic System	Type Of Control		-	Electronically Controlled Positive Flow System	Max. Operating Radius	m	16.5	m	10.5
	Main Pump	Model	-	Rexroth					
		Rated Flow	L/min	2×260					
	Max.System Pressure		MPa	32	Max. Operating Depth	m	-5	m	-5
Hydraulic Oil Tank		L	320						
					Max. Operating Radius (Grab Not Included)	t	3.9		

Dimensions



Scope Of Work

SMHW40R Lift capacities of material handler
(Boom 9.8m, Stick 7.5m, Unit:t)



SMHW40G



▪ 20% less fuel than 48t model

▪ Modular boom, longer fatigue life

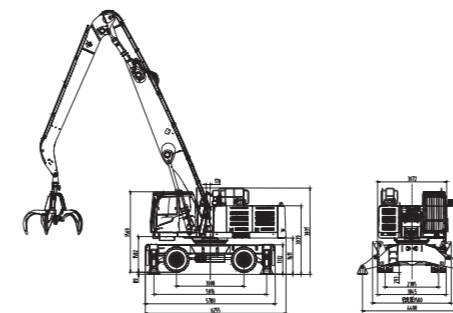
▪ Auto-dust cooling with reversible fan

▪ Heated suspension seat, 50% less vibration

Product Parameters

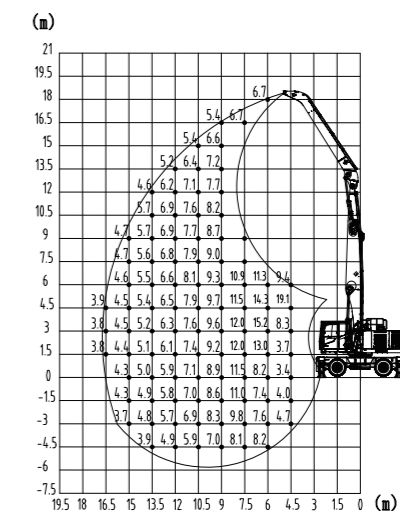
Technical Parameter				Configuration Parameter						
ITEM		UNIT	SMHW40G	CONFIGURATION	UNIT	SMHW40G				
Power System	Engine	Model	Cummins QSL 6.7	Hydraulic System	Slewing Bearing	-	Sany			
		Rated power	kw/rpm		168/2000	Max.Rotating Speed	rpm	8		
		Torque	Nm/rpm		1044/1500	Cabin	Cabin Lift Height	mm	2650	
		Emission	min		EU stage V		Basic Parameters	Boom Configuration	m	Boom 9.8
		Oil Tank Capacity	L		560			Stick 7.5	m	Stick 7.5
Chassis System	Trackwidth	mm	2386	Max. Operating Radius	m	16.5				
	Wheel base	mm	3000	Max. Operating Height	m	18				
	Support width(lengthways)	mm	5020	Max. Operating Depth	m	-5				
	Support width(crosswise)	mm	4400	Max. Operating Radius (Grab Not Included)	t	3.9				
	Turning radius	mm	8500							
	Max.Gradeability	%	30							
	Max.Travelling Speed	km/h	20							
Hydraulic System	Type Of Control	-	Electronically Controlled Positive Flow System							
	Main Pump	Model	-	Rexroth						
		Rated Flow	L/min	2×260						
	Main Valve	-	Kawasaki							
	Reducer	-	Sany							
	Boom Cylinder	-	Sany							
	Stick Cylinder	-	Sany							
	Max.System Pressure	MPa	32							
	Hydraulic Oil Tank	L	320							

Dimensions



Scope Of Work

SMHW40G Lift capacities of material handler
(Boom 9.8m, Stick 7.5m, Unit:t)



SMHW40-E



- Energy recovery, 80% lower cost vs diesel

- 7-9h runtime with high-capacity battery

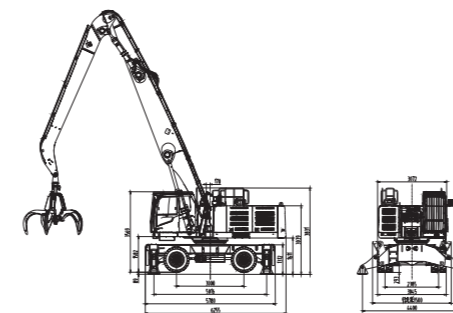
- Electric control + independent swing, +20% efficiency

- Compact wheeled chassis, strong climbing, agile movement

Product Parameters

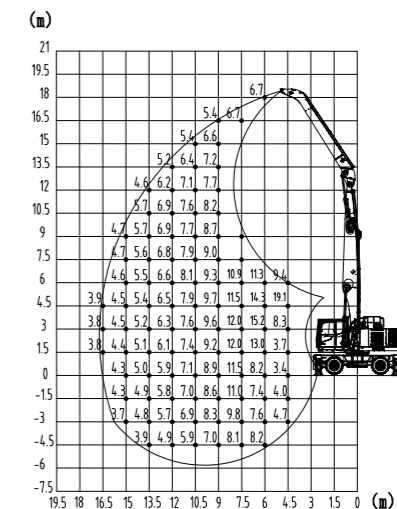
Configuration Parameter				Configuration Parameter						
ITEM		UNIT	SMHW40-E	CONFIGURATION		UNIT	SMHW40-E			
Power System	Electric Motor	Model	-	Inovance	Slewing Gear	Max. Rotating Speed	rpm	8		
		Rated Power	kW/rpm	160/2040, 80/1900		Cabin	Cabin Lift Height	mm	2650	
		Battery Voltage	VDC	618	Lubrication System		Mode	-	Automatic Lubrication	
	Electronic Control	-	Inovance	Basic Parameters		Boom Configuration	m	17		
	Battery	Model	-		CATL			17	17	
Battery Charge Level		kWh	507	17	17					
Chassis	Track Width	mm	2385	Max. Operating Radius (Excluding Spreader)	m	16.5				
	Wheel Base	mm	3000		Max. Operating Height (Excluding Spreader)	m	18			
	Support Width (lengthways)	mm	5018			Max. Operating Depth (Excluding Spreader)	m	-4.5		
	Support Width (crosswise)	mm	4400		Max. Operating Radius (Grab Not Included)		t	4		
	Turning Radius	mm	8500			Hydraulic System	Type Of Control	-	Electrically Controlled Positive Flow System	
	Maximum Gradeability	%	30					Main Pump	Rated Flow	L/min
	Max. Travelling Speed	km/h	20		Reducer				Model	-
Hydraulic System	Maximum System Pressure	MPa	34	Hydraulic Oil Tank		L	350			
		Hydraulic Oil Tank	L		350					

Dimensions



Scope Of Work

SMHW40-E Lift capacities of material handler
(Dynamic Av 9.8m Bucket Rod 7.5m unit-t)



SMHC45V



- Load-sensing hydraulics, 10% fuel cut

- Optimized powertrain

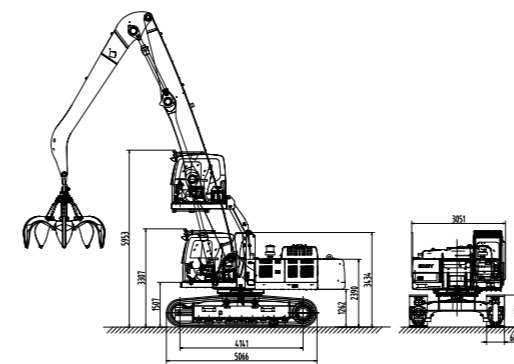
- Auto-idle & throttle steps reduce loss

- 300ms response, 450t/h handling rate

Product Parameters

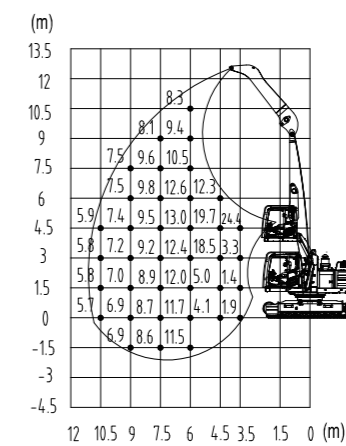
Configuration Parameter				Configuration Parameter						
ITEM		UNIT	SMHC45V	CONFIGURATION	UNIT	SMHC45V				
Power System	Engine	Model	-	Isuzu 6HK1	Slewing Gear	Max. Rotating Speed	rpm	8		
		Rated power	kW/rpm	212/2000	Cabin	Cabin Lift Height	mm	2650		
		Torque	Nm/rpm	1080/1500		Boom Configuration		m	11	14
		Emission	-	com III				m	Boom 7	Boom 8.6
		Oil Tank Capacity	L	600				m	Stick 4.5	Stick 6
Undercarriage	Track Gauge	mm	2590	Basic Parameters	Boom Mounted At The Pivot Point Of The Slewing Platform	-	Upper Pivot Point	Upper Pivot Point		
	Wheelbase	mm	4140		Max. Operating Radius	m	10.5	13.5		
	Track Width	cm	600		Max. Operating Height	m	12	15		
	Max. Travelling Speed	km/h	5		Max. Operating Depth	m	-1.5	-3		
Hydraulic System	Type Of Control	-	Electronically Controlled Positive Flow System		Max. Operating Radius (Grab Not Included)	t	5.9	4.1		
	Main Pump	Rated Flow	L/min		2×320					
	Maximum System pressure	MPa	32							
	Hydraulic Oil Tank	L	310							

Dimensions

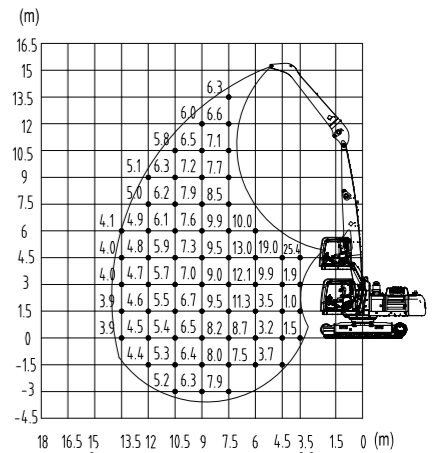


Scope Of Work

SMHC45V Lift capacities of material handler (Boom 7m, Stick 4.5m, Unit:t)



SMHC45V Lift capacities of material handler (Boom 8.6m, Stick 6m, Unit:t)



SMHW48V



▪ 520t/h productivity

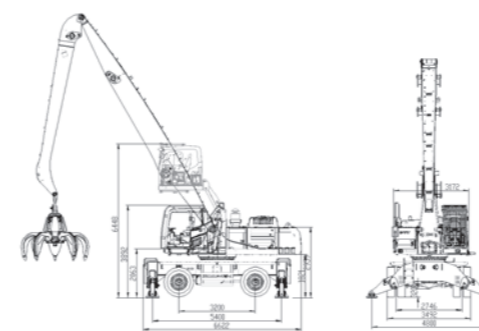
▪ 300ms actuation

▪ 20km/h wheeled chassis, fast relocation

Product Parameters

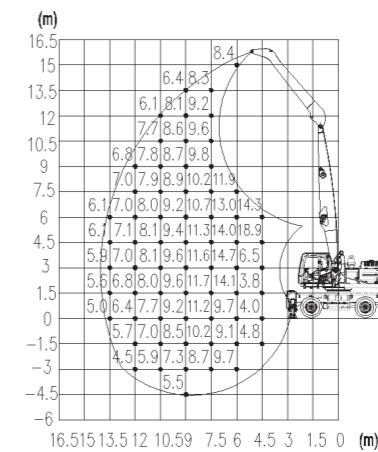
Technical Parameter				Configuration Parameter				
ITEM		UNIT	SMHW48V	CONFIGURATION		UNIT	SMHW48V	
Power System	Engine	Model	-	Isuzu 6HK1	Hydraulic System	Max. System Pressure	MPa	32
		Rated power	kW/rpm	212/2000		Hydraulic Oil Tank	L	310
		Torque	Nm/rpm	1080/1500	Slewing Gear	Max. Rotating Speed	rpm	8
		Emission	-	com III		Cabin	Cabin Lift Height	mm
		Oil Tank Capacity	L	600	Basic Parameters		Boom Configuration	m
Chassis	Track Width	mm	2746	m		Boom 8.6		Boom 10.5
	Wheel Base	mm	3200	m		Stick 6	Stick 7.5	
	Support width (lengthways)	mm	5400	Max. Operating Radius		m	13.5	16.5
	Support width (crosswise)	mm	4800	Max. Operating Height		m	15	16.5
	Turning Radius	mm	8800	Max. Operating Depth	m	-4.5	-4.5	
Hydraulic System	Type Of Control	-	Electronically Controlled Positive Flow System	Max. Operating Radius (Grab Not Included)	t	6.1	5.1	
		Main Pump	Rated Flow	L/min	2×260			

Dimensions

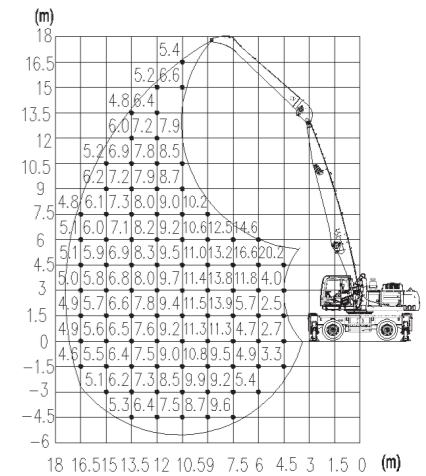


Scope Of Work

SMHW48V Lift capacities of material handler (Boom 8.6m, Stick 6m, Unit:t)



SMHW48V Lift capacities of material handler (Boom 10.5m, Stick 7.5m, Unit:t)



SMHW48G5



- For ports, timber, dismantling, recycling

- Heavy-duty design for high loads

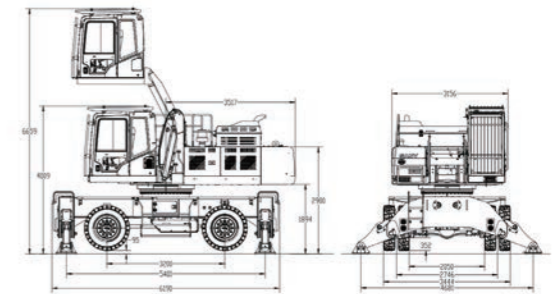
- Energy-efficient, cost-effective

- Multiple compatible attachments

Product Parameters

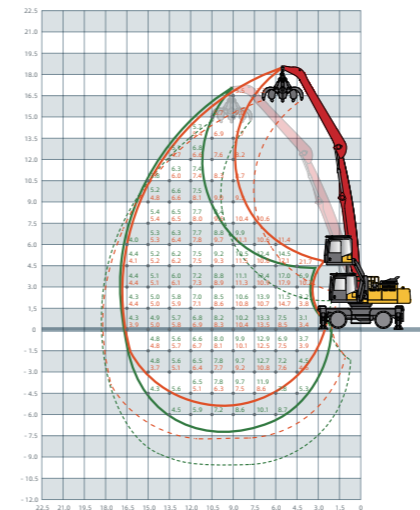
Technical Parameter				Configuration Parameter						
ITEM		UNIT	SMHW48G5		CONFIGURATION		SMHW48G5			
Power System	Engine	Model	-	Cummins SL9	Slewing Gear	Max. Rotating Speed	rpm	8		
		Rated Power	kw/rpm	252/1800						
		Torque	Nm/rpm	1526/1400						
		Emission	min	EU Stage V						
		Oil Tank Capacity	L	540						
Chassis	Track Width	mm	2746		Cabin	Cabin Lift Height	mm	2650		
	Wheel Base	mm	3200							
	Support Width (lengthways)	mm	5400							
	Support Width (crosswise)	mm	4800							
	Turning Radius	mm	8800							
	Max. Travelling Speed	km/h	20							
Hydraulic System	Type Of Control		-	Electronically Controlled Positive Flow System	Basic Parameters	Max. Operating Radius	m	16.5	19.5	
	Main Pump	Rated Flow	L/min	2×320						
	Max. System Pressure		MPa	32						
	Hydraulic Oil Tank		L	340						
	Boom Configuration		m	17						20
		m	Boom 9.6	Boom 10.5						
		m	Stick 7.5	Stick 9.5						
		m	16.5	19.5						
		m	16.5	19.5						
		m	-6	-9						
		t	3.9	3.5						

Dimensions

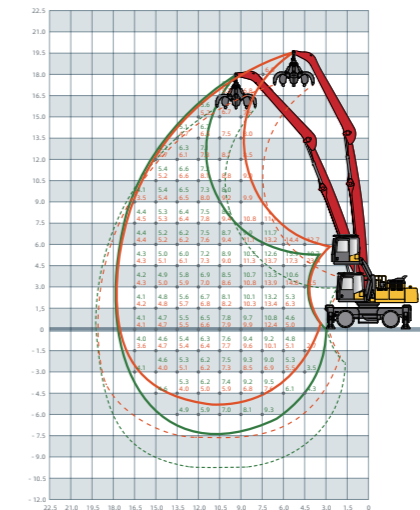


Scope Of Work

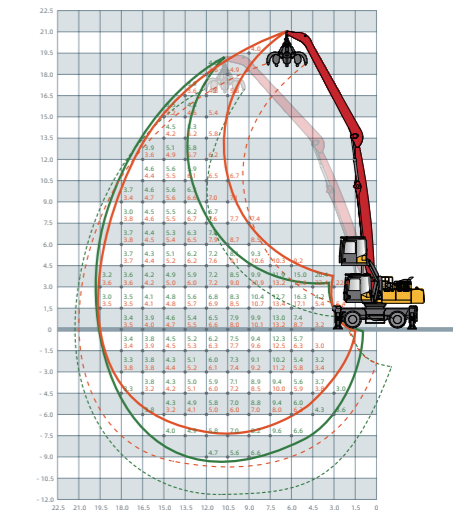
SMHW48G5 Lift capacities of material handler (Boom 9.6m, Stick 7.5m, Unit-t)



SMHW48G5 Lift capacities of material handler (Boom 10.5m, Stick 7.5m, Unit-t)



SMHW48G5 Lift capacities of material handler (Boom 10.5m, Stick 9.5m, Unit-t)



SMHW48-D



- Fuel-Saving Hydraulics: 20% lower consumption vs 48t models

- Modular Boom: 30%+ fatigue life extension

- Transport-Ready: 3m×3.5m regulation-compliant dimensions

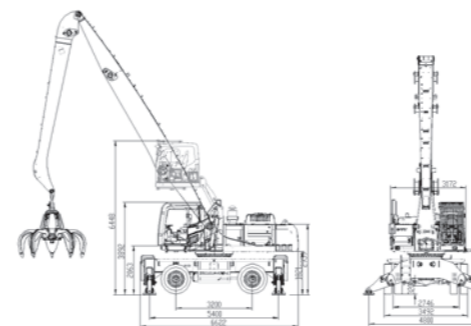
- Self-Cleaning Radiator: Motor-driven reversible fan

- Enhanced Comfort: Heated air-ride seat + 50% less vibration

► Product Parameters

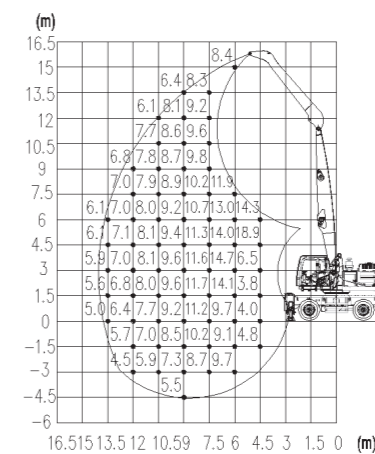
Technical Parameter				Configuration Parameter				
ITEM		UNIT	SMHW48-D	CONFIGURATION		UNIT	SMHW48-D	
Power System	Motor	Model	-	YE2-315L1-4	Slewing Gear	Slewing Bearing	-	SANY
		Rated power	kw/rpm	160/1485		Max. Rotating Speed	rpm	8
		Torque	Nm/rpm	1526/1400	Cabin	Cabin Lift Height	mm	2650
		Voltage	AC	380V,50HZ				
Chassis System	Trackwidth	mm	2746	Boom Configuration		m	18	20
	Wheel base	mm	3200			m	Boom 10.5	Boom 10.5
	Support width (lengthways)	mm	5400			m	Stick 7.5	Stick 9.5
	Support width (crosswise)	mm	4680					
	Turning radius	mm	8800	Basic Parameters	Max. Operating Radius	m	16.5	16.5
	Max. Gradeability	%	35		Max. Operating Height	m	19.5	19.5
Max. Travelling Speed	km/h	5		Max. Operating Depth	m	5	-9	
Hydraulic System	Type Of Control		-	Electronically Controlled Positive Flow System	Max. Operating Radius (Grab Not Included)	t	4.3	3.5
	Main Pump	Model	-	Kawasaki				
		Rated Flow	L/min	2×320				
	Main Valve		-	Kawasaki				
	Reducer		-	Sany				
	Boom Cylinder		-	Sany				
	Stick Cylinder		-	Sany				
	Max. System Pressure	MPa	32					
Hydraulic Oil Tank	L	380						

► Dimensions

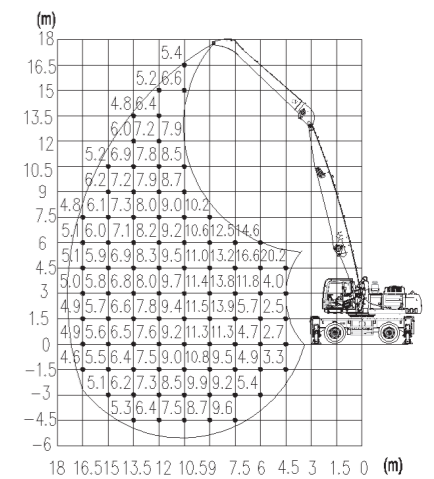


► Scope Of Work

SMHW48-D Lift capacities of material handler (Boom 10.5m, Stick 7.5m, Unit:t)



SMHW48-D Lift capacities of material handler (Boom 10.5m, Stick 9.5m, Unit:t)



SMHC50V-D



▪ Electric drive cuts costs by 65%

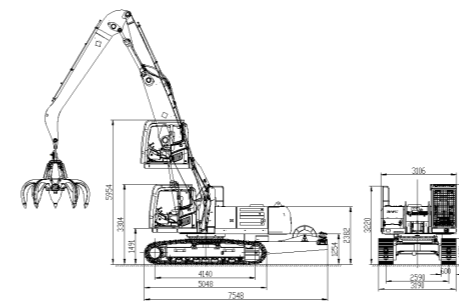
▪ 300ms fast response

▪ Crawler chassis for tough terrain

Product Parameters

Technical Parameter				Configuration Parameter				
ITEM		UNIT	SMHC50V-D	CONFIGURATION		UNIT	SMHC50V-D	
Power System	E-Motor	Model	-	XEMC	Slewing Gear	Max. Rotating Speed	rpm	8
		Rated Capacity	kW/rpm	160/1480				
		Input Voltage	V/Hz	380/50	Cabin	Cabin Lift Height	mm	2650
		Type Of Start	-	Soft Start				
Traveling Gear	Working Gauge	mm	2590	Basic Parameters	Boom Configuration	m	11	14
	Wheel Base	mm	4140				m	Boom 7
	Track Width	mm	600			m	Stick 4.5	Stick 6
	Max. Travelling Speed	km/h	5			Max. Operating Radius	m	10.5
Hydraulic System	Type Of Control	-	Electronically Controlled Positive Flow System	Max. Operating Height	m	12	15	
	Main Pump	Rated Flow	L/min	2×297	Max. Operating Depth	m	-1.5	-3
	Max. System pressure	MPa	32	Max. Operating Radius (Grab Not Included)	t	5.9	4.1	
	Hydraulic Oil Tank	L	310					

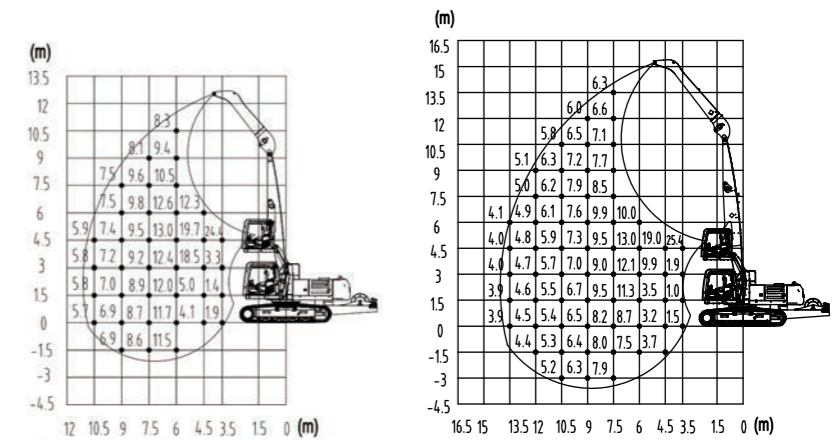
Dimensions



Scope Of Work

SMHC50V-D Lift capacities of material handler (Boom 7m, Stick 4.5m, Unit:t)

SMHC50V-D Lift capacities of material handler (Boom 8.6m, Stick 6m, Unit:t)



SMHC70



- 6.5t grab, 24s cycle, 2x 16t crane output

- Lightweight, rail-free setup

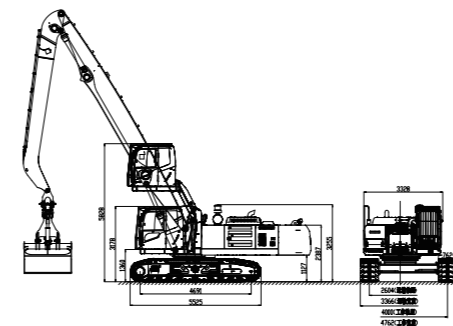
- Telescopic crawlers, ground-friendly mobility

- Dual power, 65%+ cost saving

Product Parameters

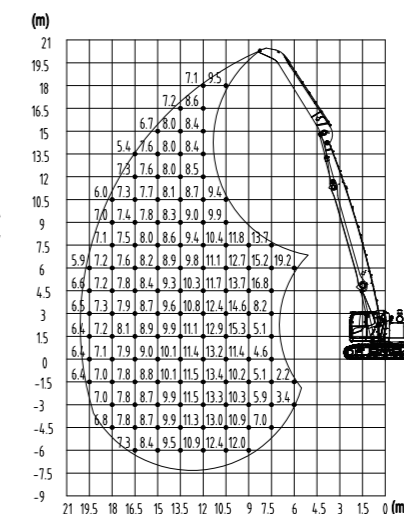
Technical Parameter				Configuration Parameter						
ITEM		UNIT	SMHC70	CONFIGURATION	UNIT	SMHC70				
Power System	Engine	Model	-	DCEC QSL8.9	Traveling Gear	Working Gauge	mm	4000		
		Rated Power	kw/rpm	264/2100		Wheel Base	mm	4691		
		Torque	Nm/rpm	1900/1500		Track Width	mm	762		
		Emission	-	com III		Max. Travelling Speed	km/h	3		
		Oil Tank Capacity	L	600		Max. Rotating Speed	rpm	8		
	E-Motor	Model	-	XEMC YE3-355M-4	Cabin	Cabin Lift Height	mm	2650		
		Rated Capacity	kw/rpm	250/1486		Basic Parameters	Boom Configuration	m	18	20
		Input Voltage	V/Hz	380/ 50	m			10.5	12.5	12.5
		Type Of Start	-	Soft Start	m			Stick 7.5	Stick 7.5	Stick 10
		Hydraulic System	Type Of Control	-	Electronically Controlled Positive Flow System	Max. Operating Radius	m	18	19.5	21
Main Pump	Rated Flow		L/min	While Using Engine: 2x400 While Using E-Motor: 2x416	Max. Operating Height	m	16.5	18	19.5	
					Max. Operating Depth	m	-6	-6	-9	
Max. System Pressure	MPa		34.3	Max. Operating Radius (Grab Not Included)	t	7.4	6.1	5.8		
Hydraulic Oil Tank	L		500							

Dimensions

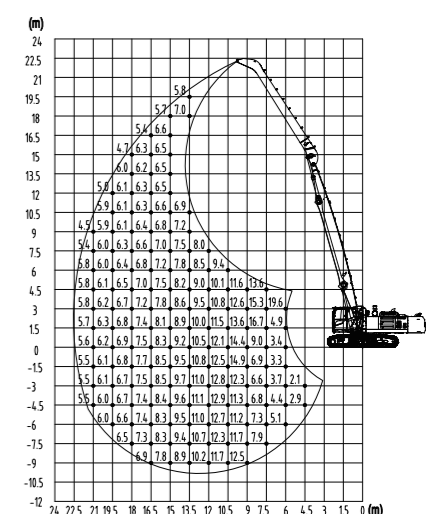


Scope Of Work

SMHC70 Lift capacities of material handler (Boom 10.5m, Stick 7.5m, Unit:t)



SMHC70 Lift capacities of material handler (Boom 12.5m, Stick 10m, Unit:t)



SMHW80



▪ 9t grab, 30s cycle, 800t/h output

▪ 13m depth, 23m height, 24m radius

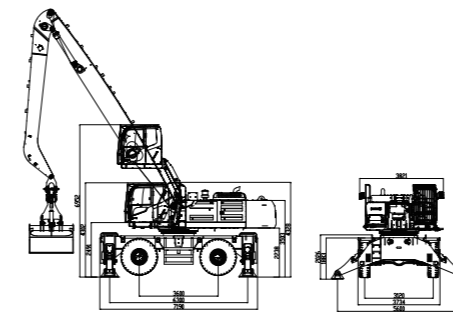
▪ Energy recovery, 20% savings

▪ Agile wheeled chassis

► Product Parameters

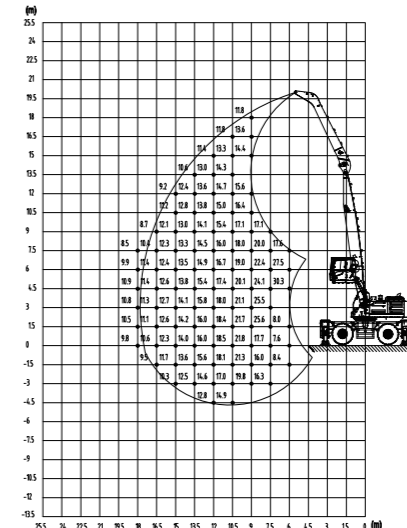
Technical Parameter				Configuration Parameter					
ITEM		UNIT	SMHW80	CONFIGURATION		UNIT	SMHW80		
Power System	Engine	Model	-	Deutz D09S4T9	Slewing Gear	Max. Rotating Speed	rpm	8	
		Rated power	kw/rpm	260/2000					
		Torque	Nm/rpm	1530/1200-1400	Cabin	Cabin Lift Height	mm	2650	
		Emission	-	com III					
		Oil Tank Capacity	L	600					
	E-Motor	Model	-	-	Boom Configuration	m	18	22	24
		Rated Capacity	kW/rpm	-			Boom 10.5	Boom 12.5	Boom 13
Input Voltage		V,Hz	-	m			Stick 7.5	Stick 10	Stick 11
Type Of Start	-	-							
Chassis System	Track Width	mm	3120	Basic Parameters	Max. Operating Radius	m	18	22	24
	Wheel Base	mm	3600						
	Support Width (lengthways)	mm	6300						
	Support Width (crosswise)	mm	5600						
	Turning Radius	mm	9800						
	Max. Gradeability	%	20						
Max. Travelling Speed	km/h	10	Max. Operating Height	m	18	21	23		
Hydraulic System	Type Of Control	-						Electronically Controlled Positive Flow System	
	Main Pump Rated Flow	L/min						2×400	
	Max. System Pressure	MPa	34						
Hydraulic Oil Tank	Capacity	L	500	Max. Operating Depth	m	-4.5	-7.5	-9	
				Max. Operating Radius (Grab Not Included)	t	10.5	8.1	6.4	

► Dimensions

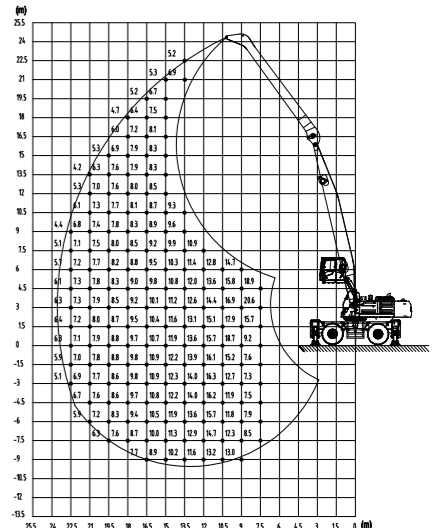


► Scope Of Work

SMHW80 Lift capacities of material handler (Boom 10.5m, Stick 7.5m, Unit: t)



SMHW80 Lift capacities of material handler (Boom 13m, Stick 11m, Unit: t)



SMHC100



▪ 9t grab, 30s cycle, 800t/h

▪ Energy-saving with regen & simulation

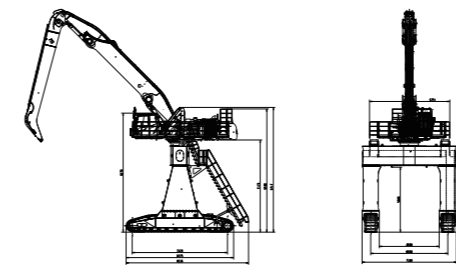
▪ 13m depth, 23m height, 24m reach

▪ Gantry chassis for rail yards

Product Parameters

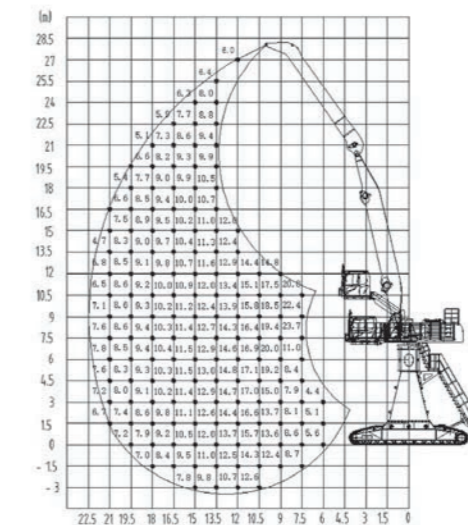
Technical Parameter				Configuration Parameter						
ITEM		UNIT	SMHC100	CONFIGURATION	UNIT	SMHC100				
Power System	Engine	Model	-	Cummins SL9	Traveling Gear	Working Gauge	mm	6000		
		Rated Power	kw/rpm	260/2000		Wheel Base	mm	7420		
		Torque	Nm/rpm	1530/1200-1400		Track Width	mm	950		
		Emission	-	com III		Max.Travelling Speed	km/h	3		
		Oil Tank Capacity	L	600	Slewing Gear	Max. Rotating Speed	rpm	8		
	E-Motor	Model	-	-		Cabin	Cabin Lift Height	mm	3200	
		Rated Capacity	kw/rpm	-	Basic Parameters		Boom Configuration	m	18	18
		Input Voltage	V/Hz	-		m		Boom 10.5	Boom 12.5	Boom 14.5
		Type Of Start	-	-		m		Stick 7.5	Stick 10	Stick 11
		Hydraulic System	Type Of Control		-	Electronically Controlled Positive Flow System	Max. Operating Radius	m	18	22
Main Pump	Rated Flow		L/min	2×400	Max. Operating Height	m	24	27	29	
Max. System Pressure			MPa	34	Max. Operating Depth	m	0	-3	-5	
Hydraulic Oil Tank			L	500	Max. Operating Radius (Grab Not Included)	t	9.0	7.5	5.0	

Dimensions



Scope Of Work

SMHC100 Lift capacities of material handler
(Boom10.5m, Stick7.5m, Unit:t)



SMHC160

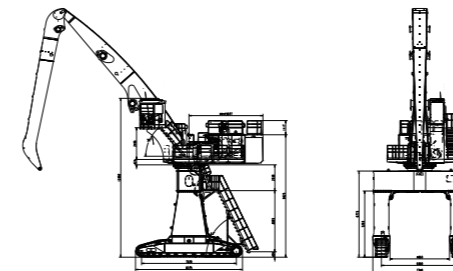


- 13t grab, 30s cycle, 800t/h
- Energy recovery, 20% savings, 60-80L/h
- 24m radius with K22/K26 boom
- Gantry crawler chassis, 40% gradient

Product Parameters

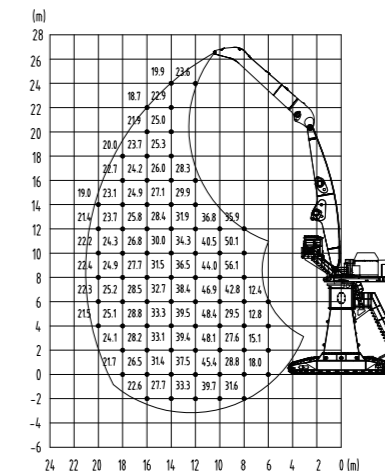
Configuration Parameter				Configuration Parameter			
ITEM		UNIT	SMHC160	CONFIGURATION		UNIT	SMHC160
Power System	Engine	Model	-	Deutz D09S3T9A*2			
		Rated power	kw/rpm	2*235/2000			
		Torque	Nm/rpm	2*1450/1200~1400			
		Emission	-	Stage III /CN-4			
	Oil Tank Capacity	L	600				
Chassis	Track Width	mm	6000				
	Wheel Base	mm	7420				
	Support Width (lengthways)	mm	8375				
	Support Width (crosswise)	mm	7340				
	Turning Radius	mm	/				
	Max. Travelling Speed	km/h	3				
Hydraulic System	Type Of Control	-	Fully Electronically Controlled Positive Flow System				
	Main Pump Rated Flow	L/min	1450				
	Maximum System Pressure	MPa	35				
	Hydraulic Oil Tank	L	1100				
Slewing Gear	Max. Rotating Speed	rpm	5				
Cabin	Cabin Lift Height	m	Fixed Height increase 2.3				
Basic Parameters	Boom Configuration		m	22	26		
			m	Boom 12	Boom 14.5		
			m	Stick 10	Stick 12		
			m	20	24		
	Max. Operating Height (Excluding Spreader)	m	26	30			
	Max. Operating Depth (Excluding Spreader)	m	-3	-7			
	Max. Operating Radius (Grab Not Included)	t	21	13			

Dimensions

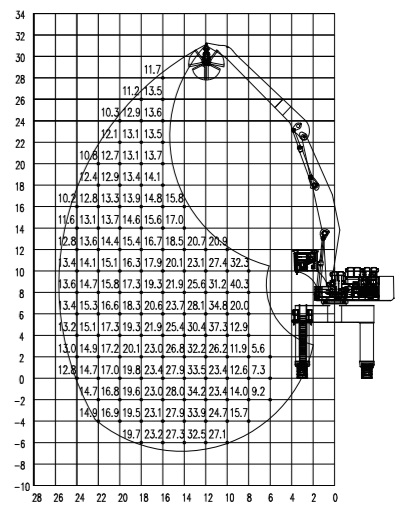


Scope Of Work

SMHC160 Lift capacities of material handler (Boom 12m, Stick 10m, Unit:t)



SMHC160 Lift capacities of material handler (Boom 14.5m, Stick 12m, Unit:t)



▶ Attachments

▶ Orange-peel Grab

Technical Parameter		
Capacity(m ³)	0.8m ³	1m ³
Self-weight(kg)	1902	1952
Self weight without rotator(kg)	1675	1725
Width when expanded(mm)	2550	2933
Width when closed(mm)	1625	1822
Height with rotator(kg)	3093	3286
Height without rotator(kg)	2829	3022
Working pressure(Mpa)	25	25



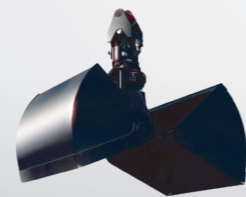
▶ Timber Grab

Technical Parameter	
Looping area(m ²)	Parameter
Self weight with rotator(kg)	2211
Looping area when expanded(mm)	3251
Looping area when closed(mm)	1638
Height/length(mm)	4028/810
Working pressure(Mpa)	28



▶ Clamshell Grab

Technical Parameter					
Capacity(m ³)	2.0m ³	2.5m ³	3.5m ³	4.0m ³	5.0m ³
Self-weight(kg)	2216	2404	2566	2752	2924
Self weight without rotator(kg)	1888	2090	2243	2318	2795
Length(mm)	1500	1602	1804	2000	2000
Width expanded(mm)	2470	2865	3112	2918	3228
Width closed(mm)	2218	2298	2668	2696	2595
Height with rotator(kg)	3270	3468	3597	3652	3629
Height without rotator(kg)	3006	3204	3333	3234	3458
Working pressure(Mpa)	28	28	28	28	28



▶ Steel Tube Grab

Technical Parameter	
Item	Parameter
Rated load(t)	8
Max. Rotate speed(r/min)	10
Rated working pressure(MPa)	25
Stretch Itinerary(mm)	single side 1420
Lateral distance(mm)	left 360/right 360
Steel tube length(m)	6-8.5
Spreader self weight(t)	2.5



▶ Pulp Grab

Technical Parameter	
Item	Parameter
Rated load(t)	6
Max. Rotate speed(r/min)	10
Movable hook open/close time(s)	<1
Rated working pressure(mpa)	25
Spreader length(mm)	2600
Spreader width(mm)	1300
Spreader height(mm)	2150
Hook distance range(mm)	840 -2000
Spreader self weight(t)	1.5



▶ Generator System

Technical Parameter	
Item	WM5-110L WM5-130L WM5-160L
Rate of power kW	25
Electromagnet	
Item	ZKZL-19E-D
Shape(mm)	520×350×750 (dimension)
Output rate of work(kW)	25
Input voltage(V)	AC380
Output voltage(V)	DC220
Protection level	IP45 (suitable for outdoor use)
Magnetization & demagnetization time	≤3s

Control cabinet			
Item	WM5-110L	WM5-130L	WM5-160L
Rated voltage(DC)	220V	220V	220V
Input rate of power(kW)	8.14	13.4	17.8
Diameter(m)	1.1	1.3	1.6
Self weight(kg)	around 1310	around 2100	around 3050
Cold current(a)	37	60.9	81
Protection level	IP67	IP67	IP67
Insulation level	H level	H level	H level
Cast iron mold(kg)	800	1100	2300
Cutting bits(kg)	800	1100	2300
No.1 Steel scalp(kg)	400	600	1100
No.2 Steel scrap(kg)	100	200	400
Type of connection	chain	chain	chain
Electromagnet outlet	YC2×10	YC2×16	YC2×16



Magnetic plate

► Construction Cases



45T



45T



35T



40T



50T



70T

► Construction Cases (Inland Port)



160T



80T



70T

► Construction Cases (Rail Yard)



70T



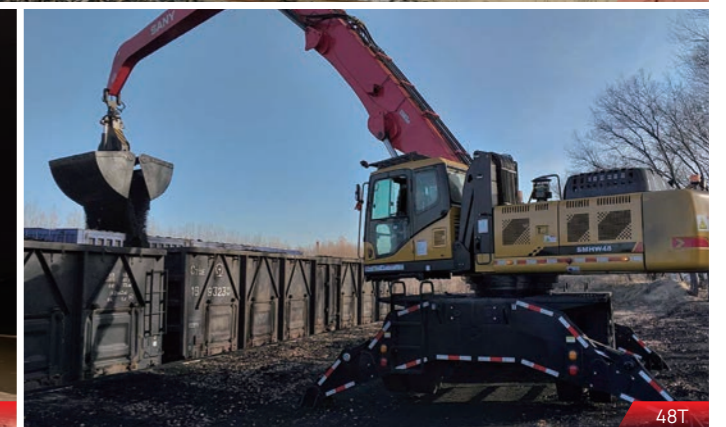
40T



45T

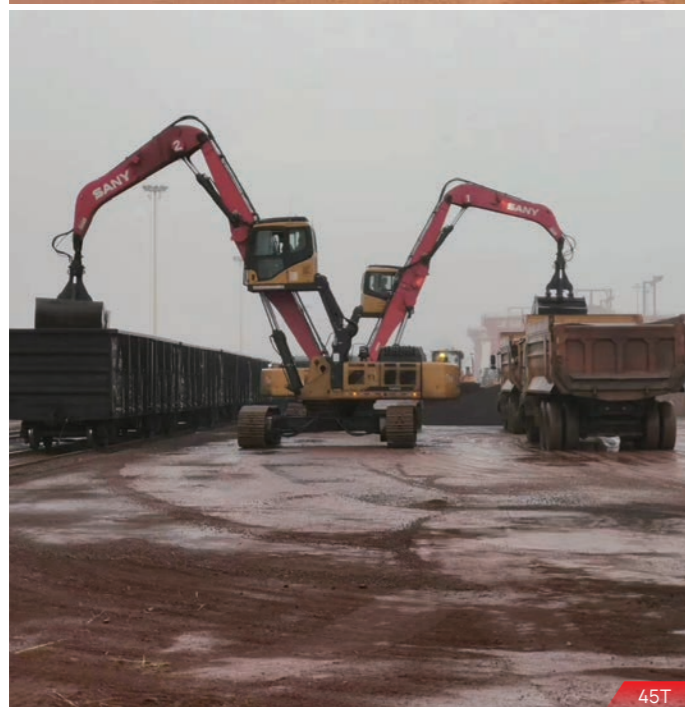


70T



48T

► Construction Cases (Breakbulk Cargo)





Sany Marine

SANY Industrial Park, Zhuhai, Guangdong, China
Service: +86-4008-87-8318 <https://www.sanyglobal.com>

Considering the continuous progress and update of SANY Marine technology,
the technical parameters and configuration of products are modified and adjusted at any time, so this brochure is for reference only.
The appearance, configuration and technical parameters of the specific model are subject to the actual model sold.

— 2025 —



<https://www.linkedin.com/company/sany-port-machinery>



www.youtube.com/@SANY_Marine



<https://www.facebook.com/SANYMarine/>