

STH625E

SANY

Quality Changes the World



MORE FEATURES, MORE POSSIBILITIES

PERFORMANCE AND EFFICIENCY

ON THE HIGHEST LEVEL

Compact, efficient, high-powered fully electrical telehandler. The STH625E delivers less noise, less vibration and less pollution. Compact dimension, is perfect for working indoors or in other enclosed spaces urban or construction.



FULLY ELECTRICAL COMPACT TELEHANDLER STH625E

Operating mass

5,000 kg

Battery size, Lithium-ion

34kWh

Hydraulic power

32kW

Working hours



PROVEN TECHNOLOGY, NEW ENERGY

MAIN FEATURES

Lifting height	6 Meters	Battery voltage	347V / 96AH	Travelling speed	20 kph	Turning radius	3 300 mm
Overall width	1 850 mm	Driving power	32 kW	Height over cab	1 920 mm	Capacity	2,500 kg

OPERATING COMFORT/CAB

- Ten-inch touchscreen display and encoder navigation
- Heater and air conditioning*
- Radio with Bluetooth and microphone
- Adjustable seat with suspension
- 12 V power socket
- Sunblind, roof and front screen
- Heated rear screen
- Front, roof and rear wiper and washers
- Armrest with storage and USB charger
- Cup and bottle holders
- Fully adjustable steering column
- Intuitive keypad functions (all backlit)
- EVI Telematics

WORKING LIGHTS

- 7x LED Working lights on cab and boom
- Full LED road lights
- Amber flashing beacon

WORK EQUIPMENT

- Standard SanyFast Fit carriage with 1 200 mm forks
- Manitou carriage with fork frame (optional)
- On board charger
- External 3 phase fast charge: optional
- Three steering modes: 4WS, 2WS and crab
- Fully proportional joystick
- Auxiliary hydraulic venting from cab

SAFETY

- CE / UKCA-certified
- ROPS ISO:3471:2008 and FOPS ISO:3449:2005
- Screen and roof guard (optional)
- Reversing alarm
- Hi-viz seatbelt
- Integrated reversing camera and distance sensor
- Seat switch and green „ready“ beacon
- Load weight monitoring
- Load moment Indicator display

Absolute reliability –
for peace of mind!

SANY's telehandler comes with 3 years, 3,000hrs warranty* gives you the assurance that you can fully count on you equipment.

STH265e CATL battery comes with 5 years or 10,000hrs warranty period.

* With participating partners

EQUIPMENT STH625E

CHARGE ANYWHERE WITH ANY POWER SOCKET



SANY PREMIUM PORTABLE CHARGER – 4 SOCKET ADAPTER PLUGS – 230V / 370V AC Electric Technology Energy Recovery

SANY's electric telehandler offers significant operational benefits:

- + No service or diesel filters to replace
- Easy and quick battery charging
- Low noise and vibration levels
- Endless applications and use

Regenerative braking and harnessing boom lowering forces.

SANY's E-POWER energy recovery system captures up to 15 % power ensuring the STH625e is efficient and more productive for longer.



PERFORMANCE PARAMETERS

Maximum lift capacity	kg kg	2 500
Lift capacity at maximum height	kg	2 000
Lift capacity at maximum reach	mm	800 6
Lift height	mm	000 3
Maximum forward reach	° ° °	350
Carriage crowd angle	mm	12
Carriage dump angle	l/mi	117
Frame levelling +/-	n	NA 3
Outside turning radius (4WS)	Mpa	300
Auxiliary hydraulic flow	Lpa	80
Auxiliary hydraulic pressure	Lwa	270
Noise at driving position		68 76
Noise to environment		

BOOM PARAMETERS

Boom (raise/lower) Boom (extend/retract)	sec	9.4/6.7
--	-----	---------

TYRES

Type/size		9.6/6
-----------	--	-------

WORKING POWER INFORMATION

12 -16 . 5

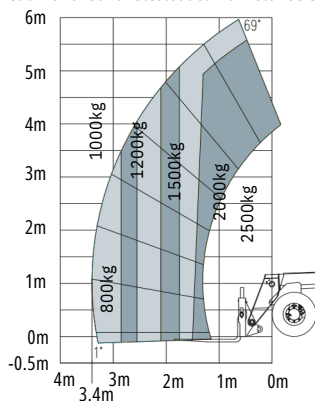
Battery nominal voltage	V	347 / 96AH
Battery technology		LITHIUM-ION
Battery energy	kWh	34
Recharge hours rapid	H	2
Recharge hours standard	H	8
Recharge voltage	V	220/370
Driving motor power	kW	32

SERVICE REFILL CAPACITIES

Hydraulic system	ltr	70
------------------	-----	----

CABIN

Cabin is ROPS & FOPS tested & conforms to ISO 3471/3449



TRANSMISSION

Transmission type		Electrical
Transmission brand		Dana 301
Transmission motor		Inovance
Driving Power	kW	32
Axles		Dana 211
Number of forward gears		2
Number of Reverse gears		2
Max, travel speed	k p h	20
Parking brake		SAHR
Service brake		Oil-immersed multi-discs

HYDRAULIC SYSTEM

Hydraulic pump type		Gear pump
Hydraulic motor		Inovance
Hydraulic power	kW	32
Hydraulic Pump		Cassapa
Hydraulic Manifold		Husco
System pressure	bar	270
Hydraulic flow	l/min	80

DIMENSIONS

Length to front of carriage	mm	4 000
Overall width	mm	1 850
Height over cab without beacon	mm	1 920
Height over cab with beacon	mm	2 010
Wheelbase	mm	2 390
Overall cabin width	mm	960
Ground clearance	mm	250
Turning radius over tyres	mm	3 300

POINT LOADS

Machine loaded with models maximum capacity		
Load per front tyre		3 260 kg
Load per rear tyre		490 kg
Machine unloaded with boom in horizontal travel position		
Load per front tyre		1 200 kg
Load per rear tyre		1 300 kg



SANY

Quality Changes the World