

SMHW40G5

**SANY**

Quality Changes the World



# REDEFINING MATERIAL HANDLING

PERFORMANCE AND EFFICIENCY ON THE HIGHEST LEVEL



**MATERIAL HANDLER**

**SMHW40G5**

Power  
168 kW  
Total weight  
38 500 – 40 500 kg  
Loading equipment  
15 – 17 m

# EQUIPMENT **SMHW40G5**

# MATERIAL HANDLER

- + High efficiency
- + Intelligent hydraulic setup
- + Extensive safety features
- + Comfortable driver cabin

Travel speed max.  
**20 km/h**  
Overall weight  
**38500 – 40500 kg**  
Loading equipment  
**15 – 17 m**



## ENGINE

Manufacturer	CUMMINS
Model	Q6.7
Engine power	168 kW / 2000 rpm
Max. torque	1 044 Nm
Emissions standard	EU Stage V
Displacement/number of cylinders	6.7 l / 6
Diesel fuel capacity	560 l
AdBlue fluid	50 l

## CABINE

Lifting range	2650 mm
Eye level	5800 mm

## GEARBOX

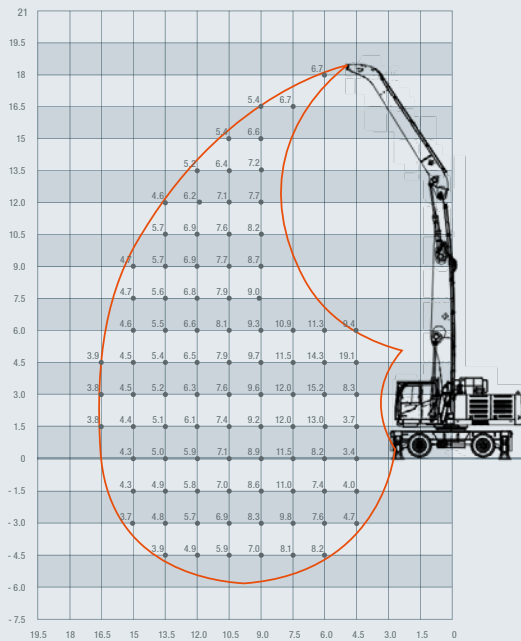
Max. travel speed	20 km/h
Climbing power	35 %
Gearbox type	Hydrostatic drive, 0–5 km/h, 0–20 km/h
Gearbox model	DANA 2-speed
Axles	KESSLER / SANY, both axles with steering and drive
Steering type	Front-wheel steering
Tires	12.00-20 solid rubber

## HYDRAULIC SYSTEM

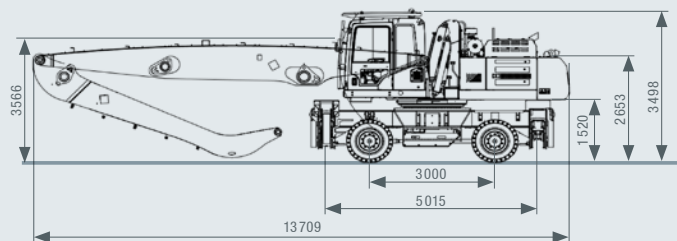
Hydraulic pressure	320 bar
Max. oil flow	2x 288 l/min
Filling quantity of the hyd. system	320 l
Swing speed	8 rpm

## LOADING EQUIPMENT

Arm	Boom	Stick
15 m	8.9 m	6.5 m
17 m	9.8 m	7.5 m



Arm: **17 m**  
Boom: **9.8 m**  
Stick: **7.5 m**



Not all products are available in all markets. As part of our continuous improvement process, we reserve the right to modify specifications and designs without giving prior notice. The figures may contain additional options.

# SANY

Quality Changes the World

**SANY EUROPE GmbH**  
Sany Allee 1  
D-50181 Bedburg  
Tel. +49 2272 90531 100  
Fax +49 2272 90531 109  
info@sanyeurope.com  
www.sanyeurope.com