

**SANY**

# SANY Material Handler SMH48G5



Engine: **252 kW**  
Weight: **46-48 t**  
Arm length: **11,5 - 20 m**

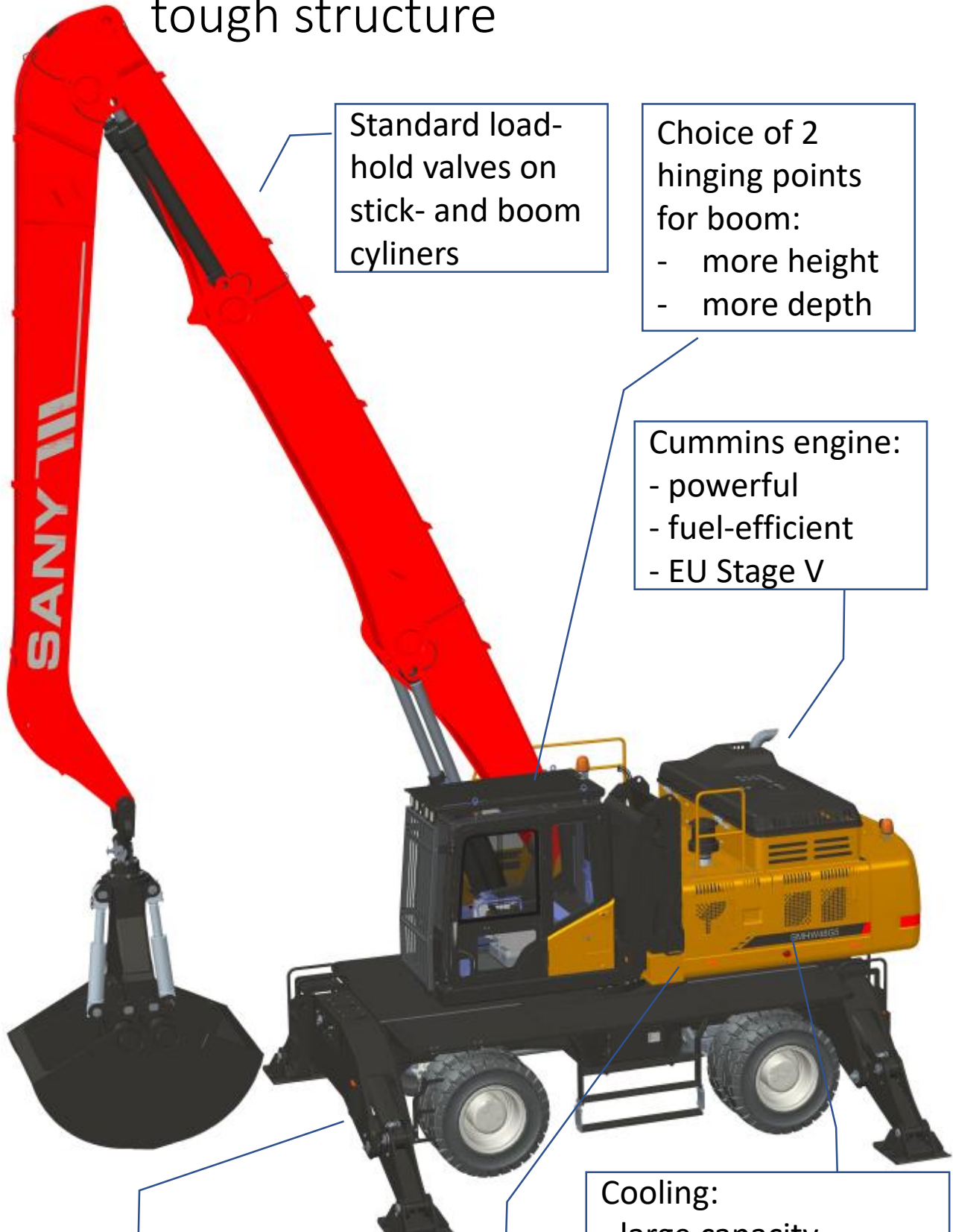


# SANY Material Handler

- Experience the SANY Material Handler. The design engineers centered around customer-needs and use experience of Sany's large excavator world.
- Out of the range of Material Handlers, this 46-48t machine plays it's strength in recycling yards, inland ports and rail ports.
- Typical Sany benefits:
  - High durability
  - Ease of use
  - right level of technology



Plenty of power, premium components,  
tough structure



Standard load-hold valves on stick- and boom cylinders

Choice of 2 hinging points for boom:  
- more height  
- more depth

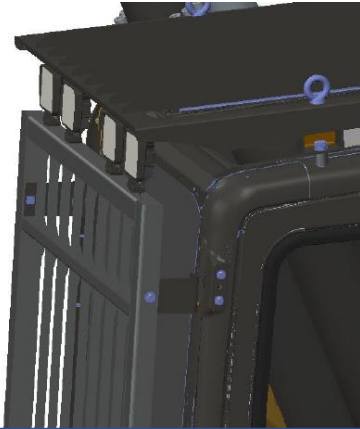
Cummins engine:  
- powerful  
- fuel-efficient  
- EU Stage V

4-wheel-steering modes: all 4, front, rear, crab

Hydraulic pumps & valves: Kawasaki

Cooling:  
- large capacity  
- Direct  
- self-cleaning by fan reversing

# Cab and Controls



High-vision guards,  
clearance for  
window cleaning,  
integrated lamps



2 multifunction-joysticks,  
including steering and drive



Standard A/C  
control



Cab-access via  
front steps and  
center steps,  
Smart suspension  
of center steps

# Maintenance



Easy reach to fuel filter, water separator



Wide doors grant access to radiators and filters



Handrails to engine bay, anti-slip surface, maintenance-panels on undercarriage



safe access via ladder

# Specification

Overall parameters	unit	value
model		SMHW48G5
overall weight	t	46 - 48
arm size, range	m	11,5 - 20

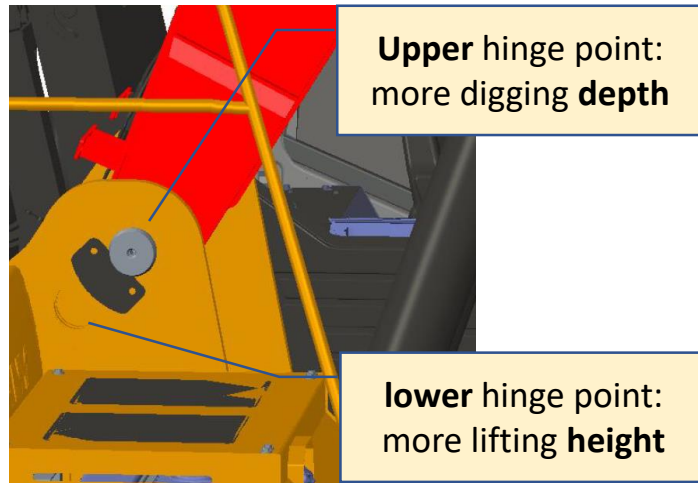
Engine	unit	value
engine brand		Cummins
engine model		QSL9
engine power	kW	252kW at 1800 rpm
torque	Nm	1526Nm @ 1400 rpm
emmission level		EU Stage V
displacement / Number of cylinders	l	8,9l / 6
Fuel tank capacity	l	540
Diesel exhaust fluid tank (AdBlue)	l	80

Transmission	unit	value
tavel speed max	km/h	20
gradeability max	%	35
transmission type		hydrostatic drive, 2-range gear-box
transmission model		
axles		front and rear, steering & drive axles
steering mode		4-wheel-steer / front-steer / rear-steer / crab-steer

Hydraulic	unit	value
hydraulic system pressure	bar	320
total displacement of hyd. pumps		387 ml/r
peak hydraulic flow	L/min	696
main pumps brand		Kawasaki / Japan
main pump models		K5V200DTH1 X 5R-9N4H-V
hydraulic tank capacity	L/min	340
hydraulic system fill capacity		360-380
main hydraulic valve supplier		Kawasaki / Japan

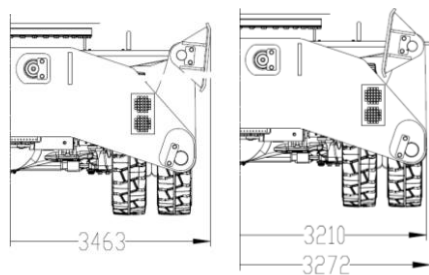
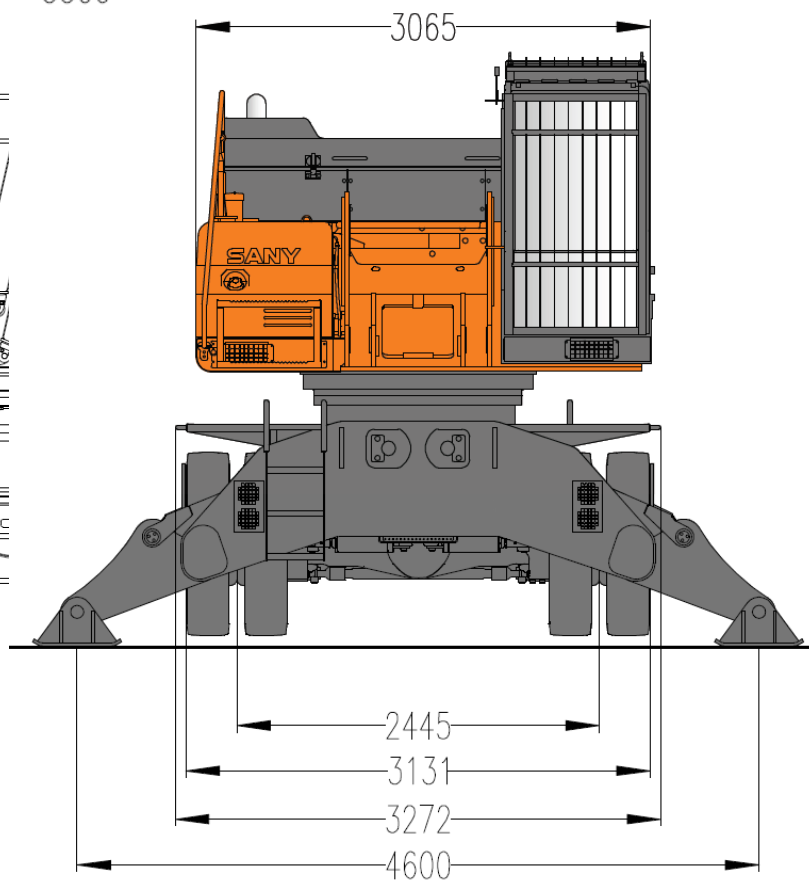
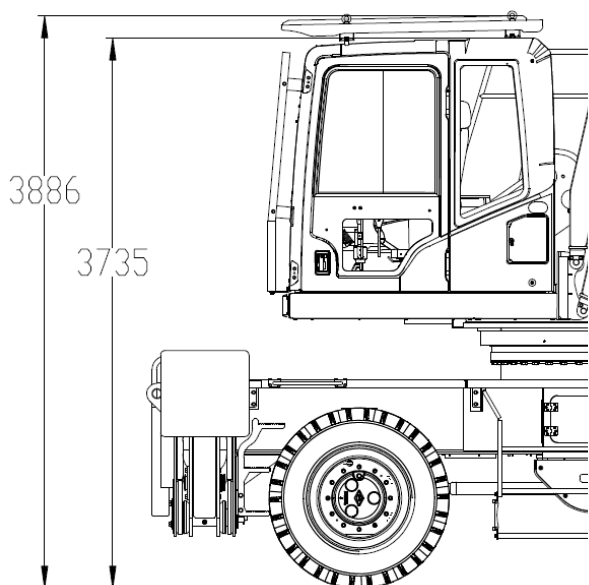
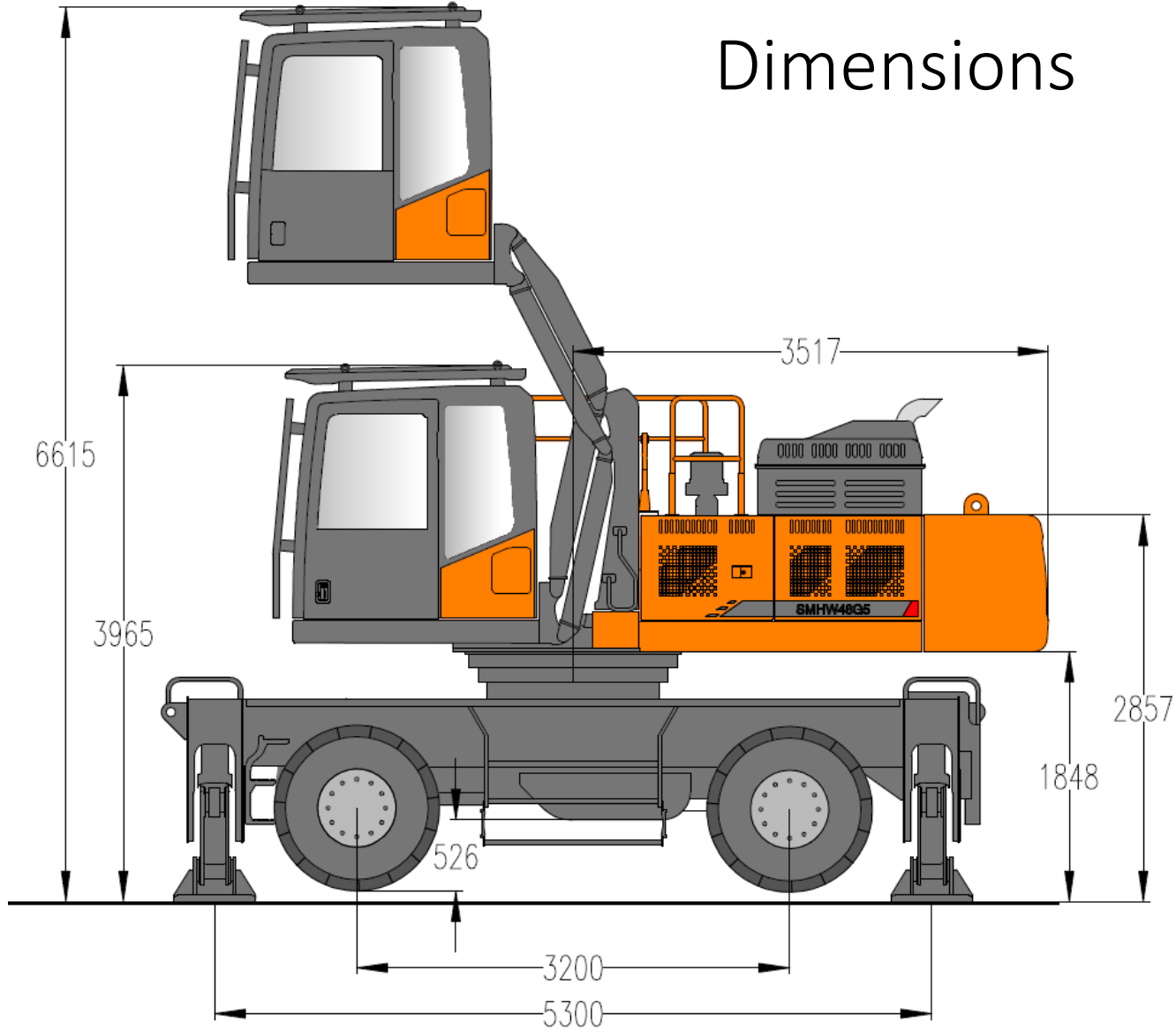
# Specification

arm choices	unit	Boom/stick length
11,5m		7 / 4,5
14,6m	m	8,6 / 6
16,1m	m	8,6 / 7,5
17,1m	m	9,6 / 7,5
18m	m	10,5 / 7,5
20m	m	10,5 / 9,6



dimensions	unit	value
tail turn radius	mm	3550
gross weight (with 18m arm)	kg	47200
outriggers distance, longitudinal (center-to-center)	mm	5300
outriggers distance, lateral (bearing to-bearing)	mm	4600
width, undercarriage	mm	3272
width, upper carriage	mm	3065
width, tire outsides	mm	3131
track width	mm	2445
height, cab roof guard	mm	3965
wheelbase	mm	3200
ground clearance below center of chassis	mm	526
approximate transport dimension without arm	mm	6560 x 3100 x 3788
approximate transport dimension 18m arm		3407mm×3100mm×3683mm
maximum cab height (outriggers applied)	mm	6615
cab lifting range	mm	2650
Eye height with cab in maximum height	mm	6200

# Dimensions



# Standard equipment and options

## model SMHW48G5

		std	opt
engine			
power	Cummins QSL9 252 kW, EU Stage V, 6cyl 8.9l, 1526Nm @ 1400rpm, turbocharged, charge air cooled		x
fuel system	dual fuel filtration 10µm + 5µm, water seperator, electric fuel transfer pump		x
emission control	diesel particulate filter (DPF) and SCR (AdBlue/urea)		
cooling	water-to-air, cooling fan with reverse speed		x
air filter	pre-filter, dry main- and safety element		x
starting aid	air heater element for temperatures to -20°C		x
	engine block heater included in "winter package" for temperatures below -20°C		x

		std	opt
design	uppercarriage durable box frame, traverse engine mounting, easy access to engine and hydraulic bay, Handrails along access steps and walkways with anti-slip surface.		x
boom hinge	upper hinge point for more digging depth, lower hinge point for more lifting height		x
lube	automatic lubrication system for uppercarriage, boom & stick and slew ring		x
Slewing	enclosed slew ring. Heavy duty slew ring gear		x
other	dozer blade		x

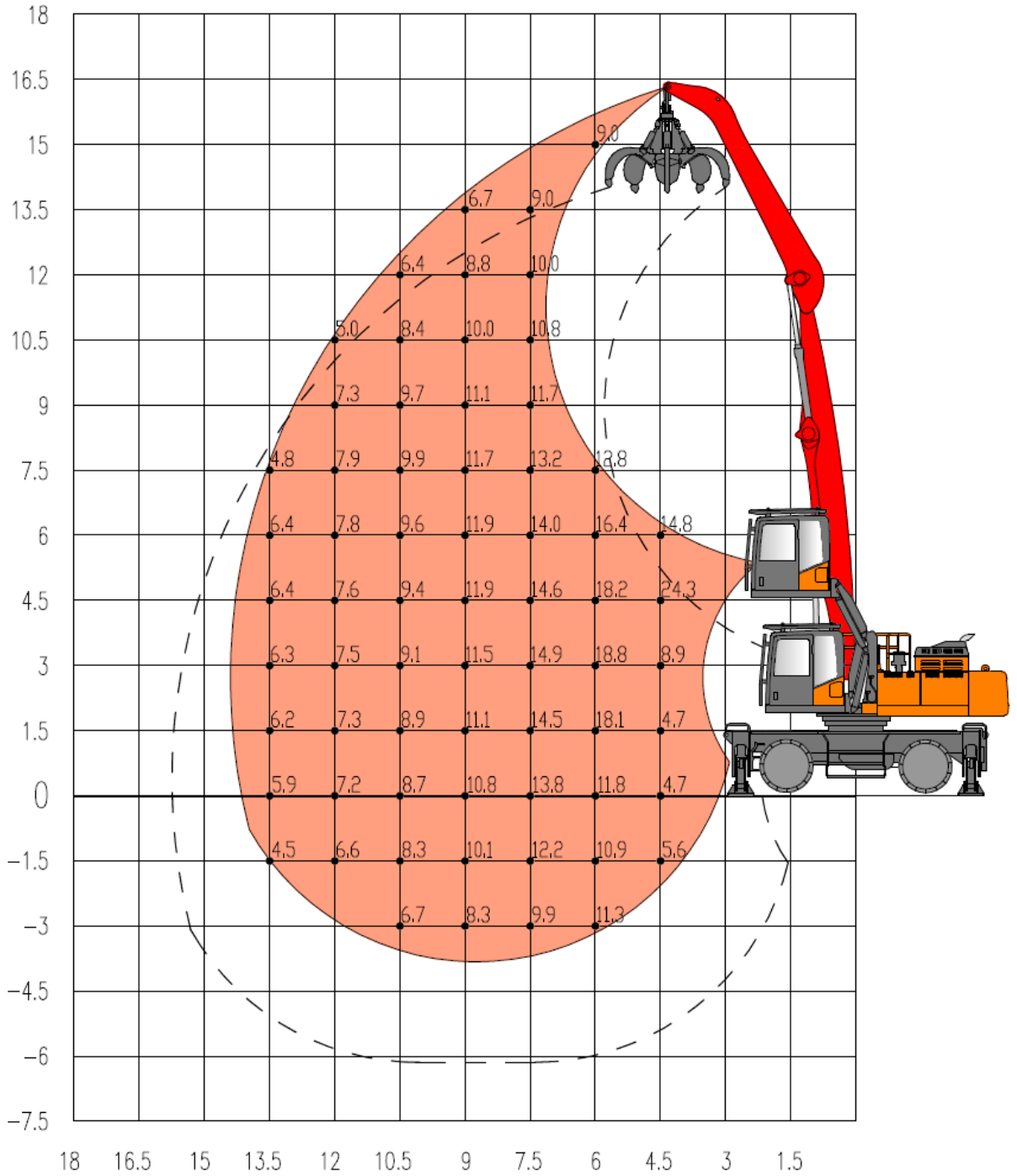
		std	opt
axles	undercarriage 4x4 drive and 4wheel steering, Dana axles		x
Trans- mission	hydrostatic drive, 2-range gear box, range I 5km/h, range II 20km/h		x
tires	8 solid tires, size 12.00x24		x
stabilizer s	4 outriggers individually controlled. protecton cover above cylinder rods, large support pads		x
brakes	wet multi-disk service brakes, stationary brake by dry spring-engaged disks- brake in protected location on wheel hubs		x
lube	central greasing banks for easy manual greasing		x
other	ingetrated maintenance platform within chassis width, access ladder on front and rear, central access steps to cab with lower step smart deflecting, additional cab access steps at front LH wheel and rear RH wheel		x

Cabin		std opt
lift	hydraulically elevated cab to 6200mm eye height	x
AC	ventilation system with automatic air-condition and heating, fresh- and circulation air filters, dedicated vents for windsceen de-misting	x
seat	comfortable, high-back seat, Grammer Actimo, lab-belt, neck-rest, both sides arm-rest	x
controls	2 multifunction-control joystick, proportional main commands, steer+drive by joystick, side panel for additional controls, safe outrigger control, float function, foot throttle for travel speed control	x
steering	including steering and travel speed on joystick	x
door	swing door, sliding window, door lock handle on inner medium height and outer low side, lock for door-open position	x
guard	high vision guard on front and roof window, integration of lamps	x
glass	one-piece right-hand side window, front window openable,	x
display	7" main display, onboard-diagnostic	x
sunblind	rollung sunblinde for roof and front window	x
other	several camera systems and recording, loudspeaker alarm system, rear distance sensors, weighing system	x

Hydraulic		std opt
	load sensing, pressure and system flow controlled	
pump	Kawasaki variable displacement pump, 387ml, 696l/min, 320 bar	
filters	170µm suction filter, 10µm return line twin-filters, 5µm pilot line filter	x
	3µm filter element for hydraulic system	x
control	Kawasaki multi tandem valve block. Command by 2 multifunction joysticks	
boom, stick	pipe fracture safety valves on boom cylinders and stick cylinders, 4 lines for attachment oil supply: pipe protection at stick, shut-off valves near stick-end	
	Third cylinder on stick	x
Electric		std opt
voltage	24V, protection system	x
	LED work-lamps: 4 on cab roof, 2 at boom (LH/RH), 2 at stick (LH/RH), 2 on counterweight	
lamps	H3 road-lamps at front (high beam/low beam), turn indicator lights, rear lamps on undercarriage with guard, 2 service lamp at rear cab roof	x
protecti ons	protecting technology for stick retraction, engine protection, dynamic anti-tipping, engine eco mode, main switch for batteries	x
camera	several camera systems and recording, rear distance sensors	x
other	weighing system, loudspeaker alarm system	x

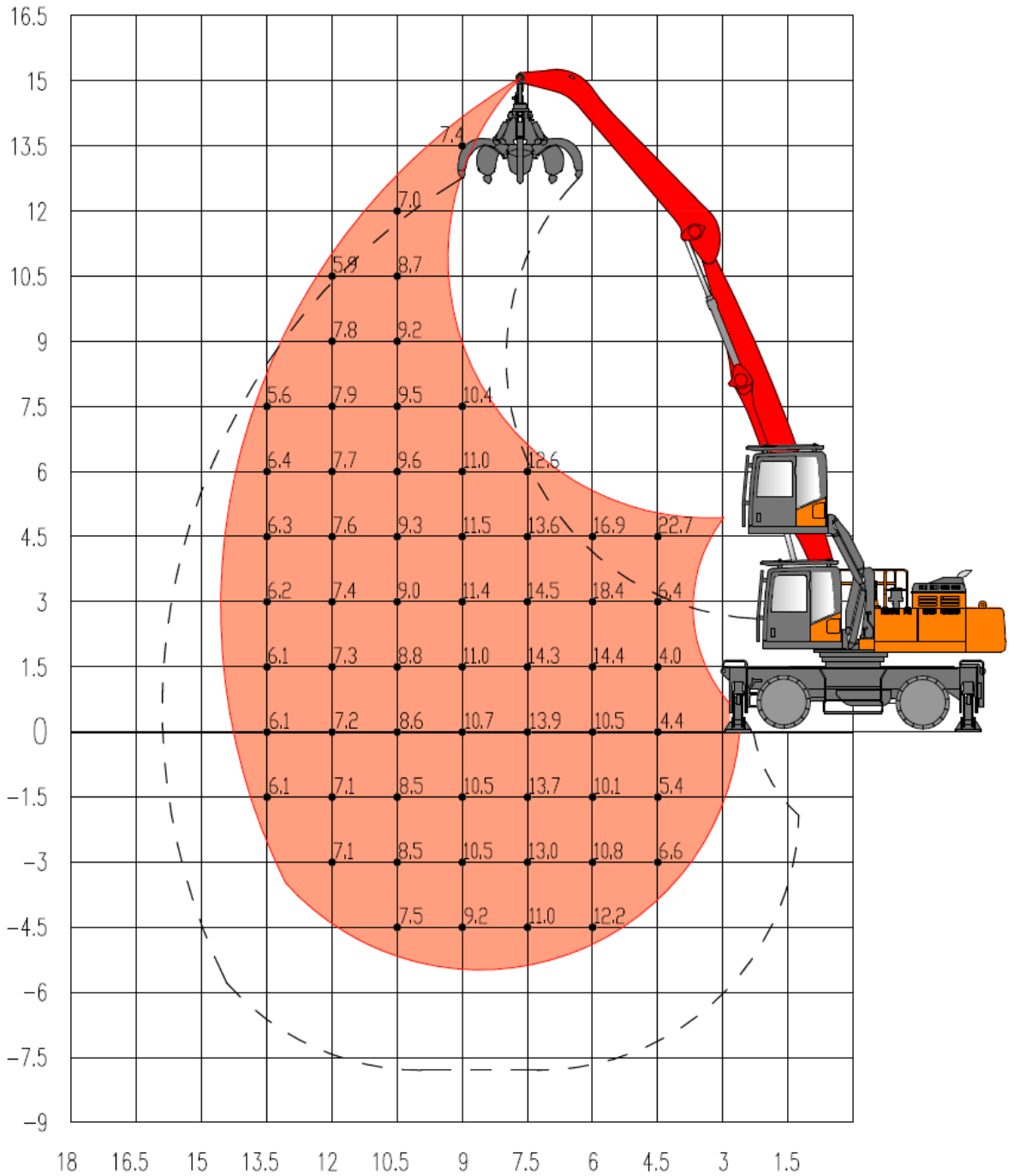
# SMHW48G5 load ratings

Undercarriage	arm	hinge point
wheeled	<b>14,1 m</b>	<b>Lower, more lift height</b>



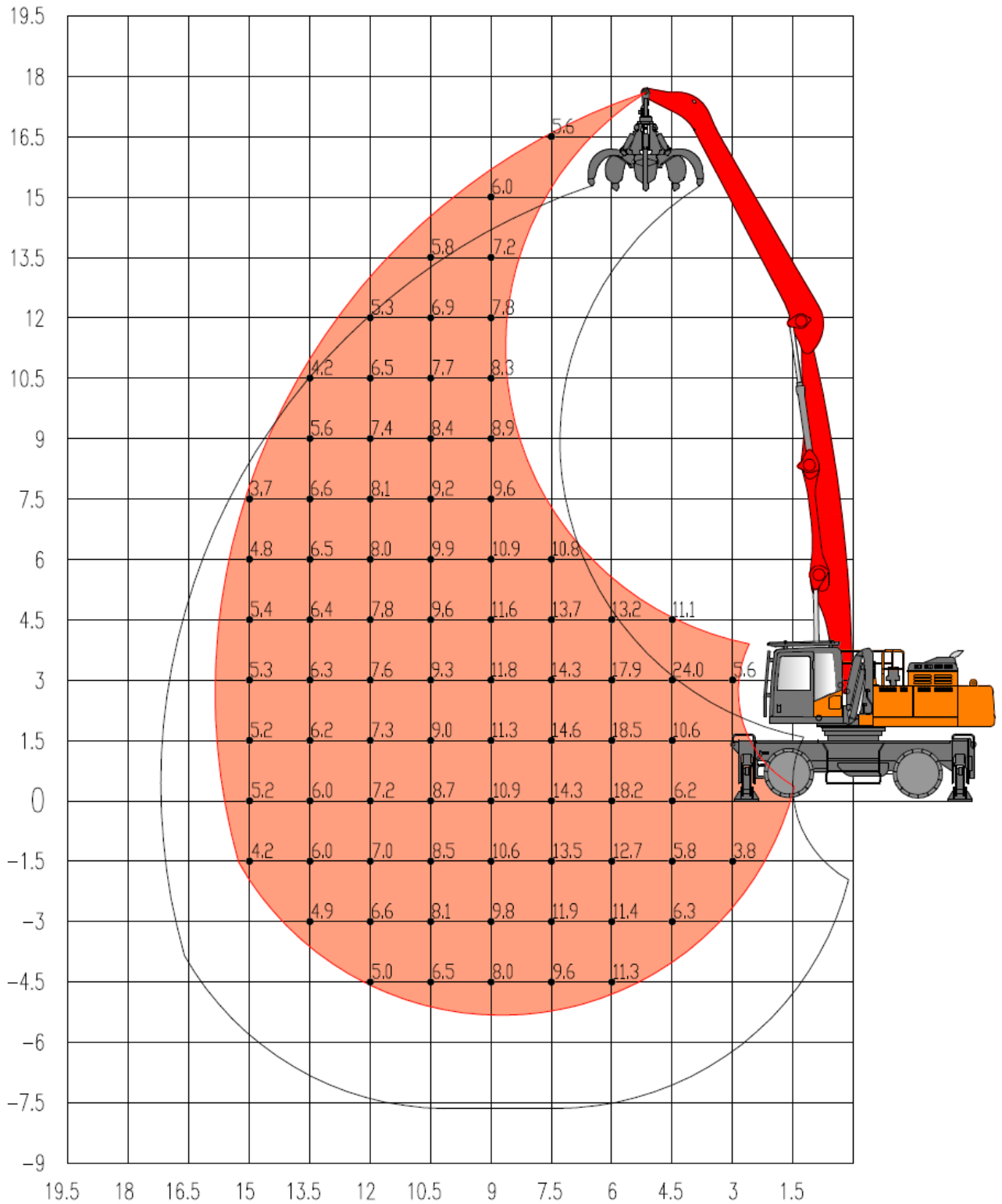
# SMHW48G5 load ratings

Undercarriage	arm	hinge point
wheeled	<b>14,1 m</b>	<b>upper</b> , more digging depth



# SMHW48G5 load ratings

Undercarriage	arm	hinge point
wheeled	<b>16,1 m</b>	<b>Lower, more lift height</b>

















# SANY

