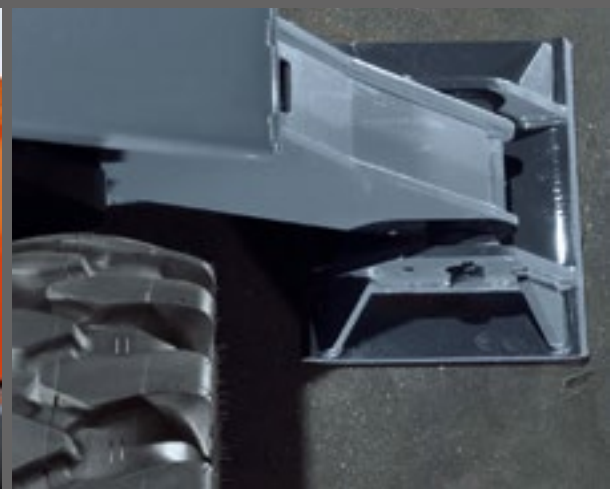


ATLAS

Material Handler 200MH



-  20.2 - 21.5 t
-  105 kW (143 hp)
-  10.1 m



FAST. RELIABLE. VERSATILE.
200MH

Technical specifications

ENGINE

Power according to ISO 9249.... 105 kW (143 hp)	Number of cylinders4 / 6	Alternator..... 24 V / 55 Ah
RPM 1800/min	Borehole/lift.....101 / 126	Starter.....24 V / 4 kW / 24 V / 4,8 kW
Make..Deutz TCD 4.1 / Deutz TCD 6.1 (Stage 3B)	Cooling system..... water-cooled	
Design..... Turbocharger / intercooler	Air filterDry air filter	
Cylinder capacity.....4038 / 6057 cm ³	Battery..... 2 x 12 V / 100 Ah	

HYDRAULIC SYSTEM

<ul style="list-style-type: none"> • Load limit controlled high-performance pump • Fuel-efficient flow-on-demand control 	<ul style="list-style-type: none"> • Suction valves for all work functions • Load-retaining and fine-lowering valve in lifting circuit 	<ul style="list-style-type: none"> • Cylinder end-position damping • Temperature-controlled fan for cooler
<ul style="list-style-type: none"> • Sensitive, proportional, independent steering 	<ul style="list-style-type: none"> • Pipe-break protection valves for lifting cylinders 	<ul style="list-style-type: none"> • Max. discharge flow.290 l/min
<ul style="list-style-type: none"> • Primary and secondary protection against overload 	<ul style="list-style-type: none"> • Grab and grab-rotating function • 2 additional circuits for additional consumer loads possible 	<ul style="list-style-type: none"> • Max. operating pressure.360 bar • Operating modes: 3 pre-programmed modes (Fine, Eco, Power)

SWING ASSEMBLY

<ul style="list-style-type: none"> • Swing motor: 	Axial piston motor with priority valve	<ul style="list-style-type: none"> • Max. swing speed.9/min
<ul style="list-style-type: none"> • Swing gear: 	Planetary transmission	<ul style="list-style-type: none"> • Swing torque 49 kNm
<ul style="list-style-type: none"> • Swing brake: 	Automatic multidisc brake	

TRACTION DRIVE AND BRAKES

<ul style="list-style-type: none"> • Variable displacement motor • Power-shift transmission • Double-acting brake valve • Driving direction pre-selection via switch in joystick 	<ul style="list-style-type: none"> • Automotive drive and cruise control: • Maximum speed.....20 km/h • Terrain speed.....5 km/h • Crawling speed.....1 km/h 	<ul style="list-style-type: none"> • Dual circuit brake system Multi-disc • Parking brake Multi-disc
--	--	--

UNDERCARRIAGE

<ul style="list-style-type: none"> • 28 t special excavator axles: 	<ul style="list-style-type: none"> • Steering axle with automatic oscillating axle blocking 	<ul style="list-style-type: none"> • 8 tyres. 10.00 - 20
---	--	--

FILL CAPACITIES

<ul style="list-style-type: none"> • Fuel tank264 liter • Cooling system.....38 liter 	<ul style="list-style-type: none"> • Engine oil.....10 liter • Hydraulic tank180 liter 	<ul style="list-style-type: none"> • Hydraulics system350 liter
---	--	--

DRIVER'S CAB

<ul style="list-style-type: none"> • Meets latest safety standards • Extra large entry zone • Spacious leg room • Excellent circumferential visibility • Preparation for radio installation with mute function 	<p>CONTROL:</p> <ul style="list-style-type: none"> • Ergonomic joysticks • Slim steering column, height and tilt adjustable • Indicators, controls and operating switches are clearly arranged 	<p>CLIMATE CONTROL:</p> <ul style="list-style-type: none"> • Air conditioning equipped as standard • Very good air distribution through optimally arranged nozzles
<p>DRIVER'S SEAT:</p> <ul style="list-style-type: none"> • Air-cushioned comfort seat (optional seat heating) • Arm rests and lumbar support • Seat adjustable separately from console 	<p>MONITORING:</p> <ul style="list-style-type: none"> • Operating data display screen • Automatic system for monitoring, warning and storage of data 	<p>SOUND LEVELS:</p> <ul style="list-style-type: none"> • ISO 6396 (L_{pA}) in driver's cab 70 dB(A) • 2000/14EG (L_{wA}) ambience level..... 97 dB(A)

Working equipment

OPERATING WEIGHTS

	LOADING BOOM 6.00 m (C6.6i)	
	Stick 4.00 m (D6.14i)	Stick 4.00 m (D6.14iS)
DB / outriggers	20.5 t / 21.3 t	20.7 t / 21.5 t
4 outriggers	20.8 t / 21.6 t	21 t / 21.8 t

Operating weight with driver, solid rubber tyres, completely filled implement and 1.3 tons for attachments

EQUIPMENT

BASIC DEVICE ATLAS 180MH / 200MH

- | | | |
|---|--|--|
| <ul style="list-style-type: none"> 200MH material handler with quadruple outrigger support and 2 lifting cylinders (A 7.32i) | STANDARD EQUIPMENT: | <ul style="list-style-type: none"> Radio preparation with mute function |
| <ul style="list-style-type: none"> 200MH material handler with DB* on rigid axle, double outrigger support on steering axle and 2 lifting cylinders (A7.33i) | Engine: | <ul style="list-style-type: none"> Ready for electric cooling box |
| <ul style="list-style-type: none"> 200 MH with DB on steering axle, double outrigger support on rigid axle and 2 lifting cylinders (A7.35i) | <ul style="list-style-type: none"> Automatic idle | <ul style="list-style-type: none"> Different options for storage, compartment for documents |
| * DB - Dozer blade | <ul style="list-style-type: none"> Diesel pre-filter Engine monitoring | <ul style="list-style-type: none"> Seat adjustable separately from console Rear view security camera with 5" LCD-colour monitor Heat-absorbing glass, tinted windows Automotive drive and cruise control |

BOOMS:

- | | | |
|--|-------------------|---|
| <ul style="list-style-type: none"> Loading boom with bending cylinder 6.0 m (C 6.6i) Adjustable boom consisting of the main arm 1.87 m (C 6.41) with adjustable cylinder and boom 3.1 m (C 6.46) with stick cylinder | Hydraulics | <ul style="list-style-type: none"> Operating data display screen |
|--|-------------------|---|

STICKS:

- | | | |
|---|--|---|
| <ul style="list-style-type: none"> Stick 2.65 m (D6.3) Stick 4.00 m (D6.14) Stick for sorting grapple 4.00 m (D6.14iS) | <ul style="list-style-type: none"> Accumulator for emergency lowering of the arm system Pipe break protection valves for lifting cylinders Max. load-limit control Cylinder end-position damping | EQUIPMENT: |
| | | <ul style="list-style-type: none"> Joint bearings in stick and bucket cylinders Combined lubricating points for swing bearing and arm equipment |

BUCKET TIPPING CYLINDER:

- | | | |
|--|--|--|
| <ul style="list-style-type: none"> Bucket tipping cylinder with bucket linkage (F6.1) | Cab: | UNDERCARRIAGE: |
| | <ul style="list-style-type: none"> Air-conditioning Slim steering column, height and tilt adjustable | <ul style="list-style-type: none"> Power-shift transmission Wet disc brakes Tool box in the undercarriage |

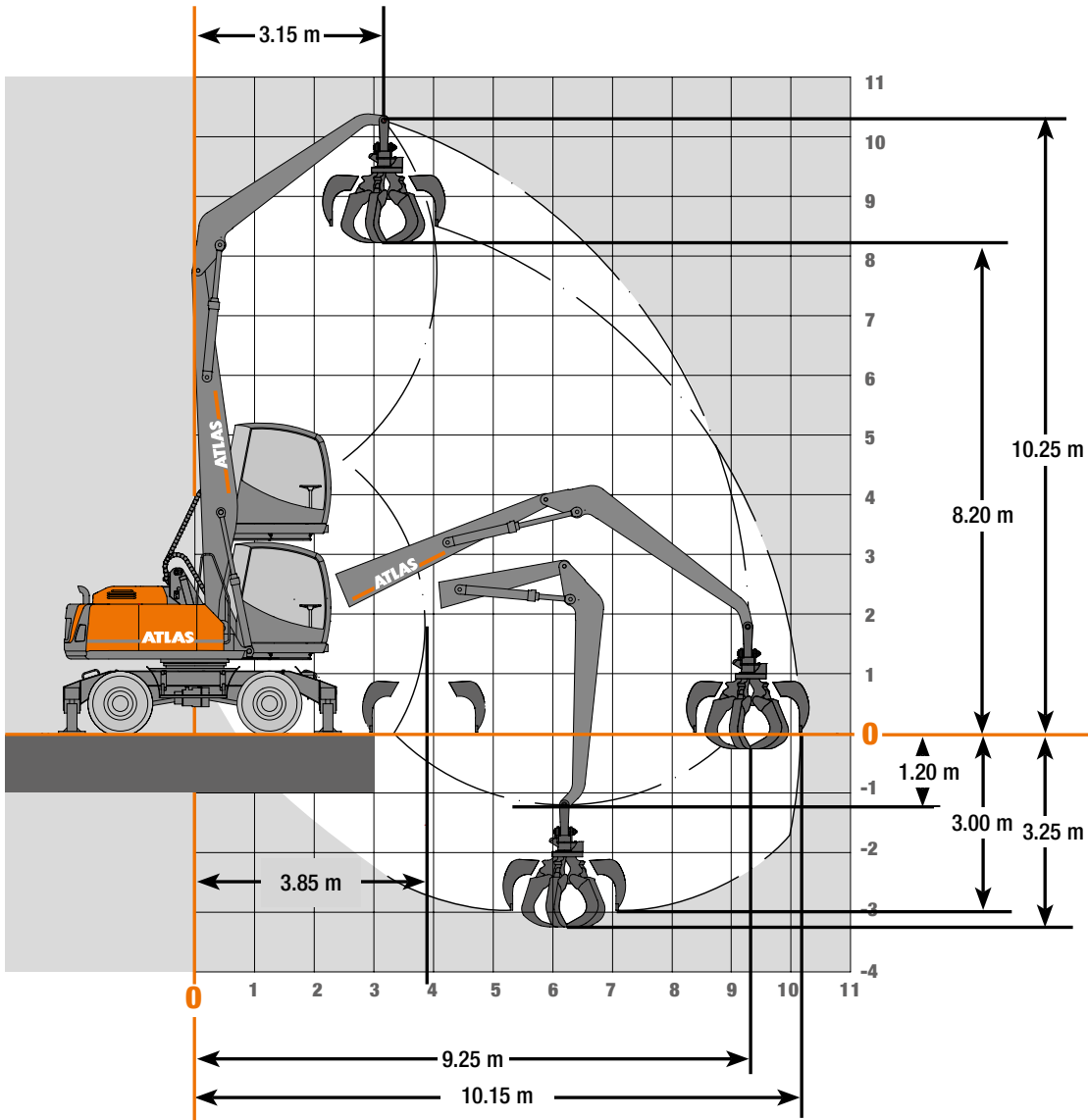
ADDITIONAL EQUIPMENT

- | | | |
|---|--|--|
| Engine: | Cab: | Undercarriage: |
| <ul style="list-style-type: none"> Refueling pump Engine speed adjustment via potentiometer Auxiliary heating Cold start assistance | <ul style="list-style-type: none"> Cab protection guard Beacon light Heated driver's seat GPS/GSM telemetric system for monitoring of operating data, consumption, position Radio/CD/MP3, front AUX in, USB Xenon working lights Lift-cabin - 2 m elevation Cab elevation 1.20 m/0.6 m Pressurized cabine Electric cooling box | <ul style="list-style-type: none"> Wide axles (overall width 2750 mm) Wide dozer blade (overall width 2750 mm) Solid rubber tyres |
| Hydraulics: | | Other special equipment: See price list |
| <ul style="list-style-type: none"> Hydr. adaptor kit, switch supports pairwise in front and back Hydr. adaptor kit, switch supports individually Biodegradable oil | | |
| Equipment: | | |
| <ul style="list-style-type: none"> Central lubrication system | | |

ATTACHMENTS

- | | | |
|--|--|---|
| <ul style="list-style-type: none"> Clamshell grab Orange peel grab | <ul style="list-style-type: none"> Load hook Load lifting magnet | <ul style="list-style-type: none"> Log grab Sorting grapple |
|--|--|---|

Working ranges Loading boom 6.0 m (C6.6i) + Stick 4.0 m (D6.14i)



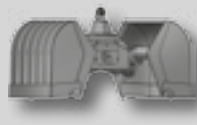
Attachments



Load hook



Log grab



Clamshell grab



Orange peel grab



Load lifting magnet



Sorting grapple

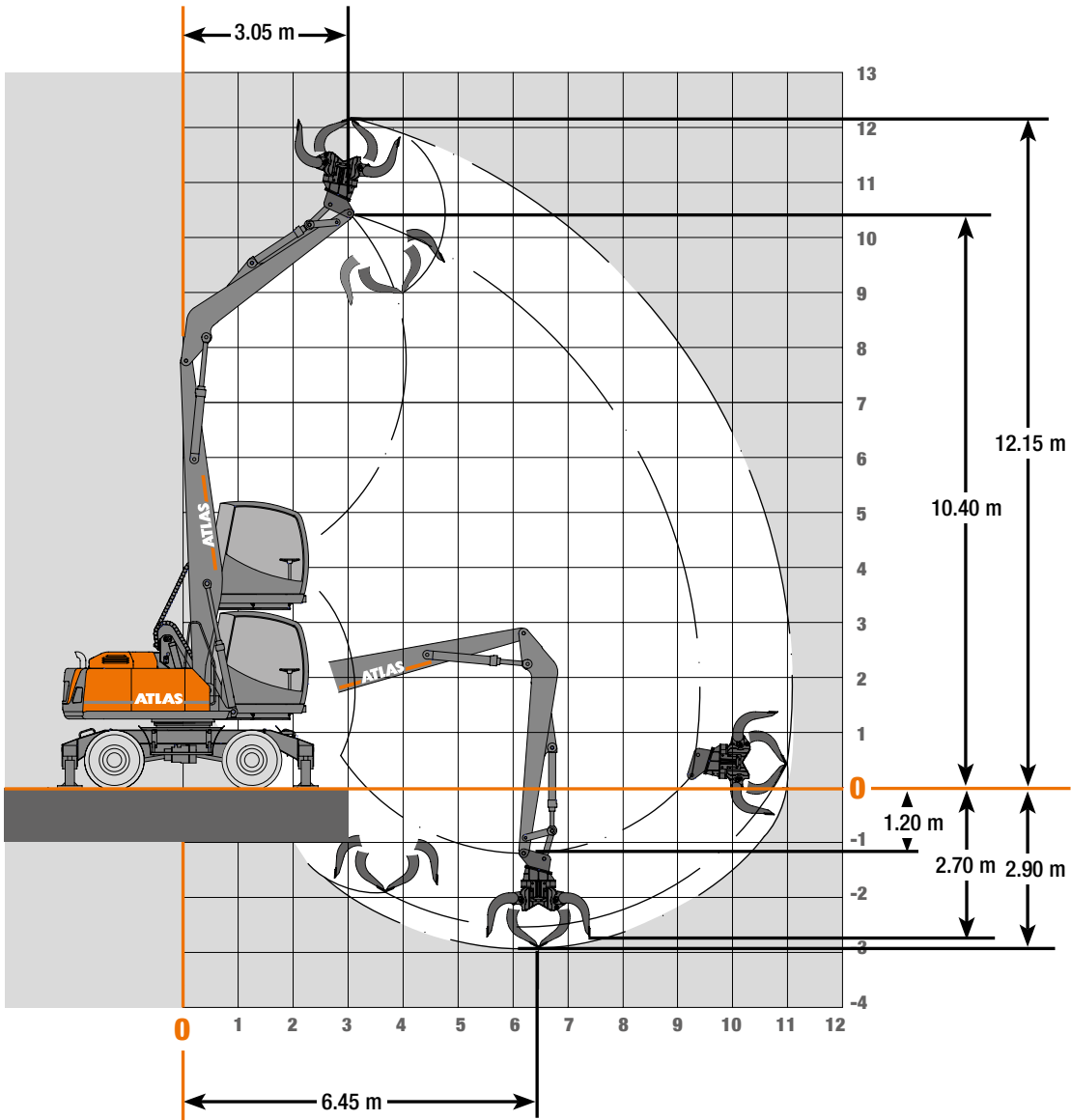
Lifting capacities Loading boom 6.0 m (C6.6i) + Stick 4.0 m (6.14i)

Lifting capacities 200MH: Loading boom 6.0 m (C6.6i) with Stick 4.0 m (D6.14i). Max. reach 10.15 m

HEIGHT		2.5 m		4.0 m		5.5 m		7.0 m		8.5 m	
		FRONT	LATERAL	FRONT	LATERAL	FRONT	LATERAL	FRONT	LATERAL	FRONT	LATERAL
+ 9.0 m	outriggers down			7.14*	7.14*	5.47*	5.47*				
	outriggers up			7.14*	6.22	5.11	3.9				
+ 7.5 m	outriggers down			7.31*	7.31*	5.39*	5.39*	4.41*	4.41*		
	outriggers up			7.31*	6.21	5.17	3.95	3.55	2.7		
+ 6.0 m	outriggers down			7.14*	7.14*	5.49*	5.49*	4.43*	4.43*		
	outriggers up			7.14*	6.25	5.11	3.89	3.53	2.69		
+ 4.5 m	outriggers down	6.71*	6.71*	7.68*	7.68*	5.69*	5.69*	4.47*	4.47*	3.57*	3.57*
	outriggers up	6.71*	6.71*	7.68*	6.01	4.96	3.75	3.46	2.62	2.58	1.94
+ 3.0 m	outriggers down			8.25*	8.25*	5.85*	5.85*	4.47*	4.47*	3.48*	3.48*
	outriggers up			7.57	5.51	4.73	3.53	3.35	2.51	2.53	1.89
+ 1.5 m	outriggers down			8.07*	8.07*	5.71*	5.71*	4.28*	4.28*	3.23*	3.23*
	outriggers up			7.04	5.03	4.49	3.32	3.24	2.41	2.48	1.84
0 m	outriggers down			5.6*	5.6*	5.03*	5.03*	3.77*	3.77*	2.72*	2.72*
	outriggers up			5.6*	4.81	4.35	3.18	3.16	2.33	2.44	1.81
- 1.5 m	outriggers down										
	outriggers up										

The specified max. loading capacities in tonnes include a stability of 33% or are calculated at 87% of the hydraulic lifting power, as per ISO10567. These values are applicable at the tip of the arm with optimum positioning of the corresponding arm system. * Value limited due to hydraulics. Weights of attached load carrying accessories (grab, magnet, load hook, etc.) are not included with the load carrying values.

Working ranges Loading boom 6.0 m (C6.6i) + Stick 4.0 m (D6.14iS)



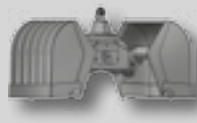
Attachments



Load hook



Log grab



Clamshell grab



Orange peel grab



Load lifting magnet



Sorting grapple

Lifting capacities Loading boom 6.0 m (C6.6i) + Stick 4.0 m (D6.14iS)

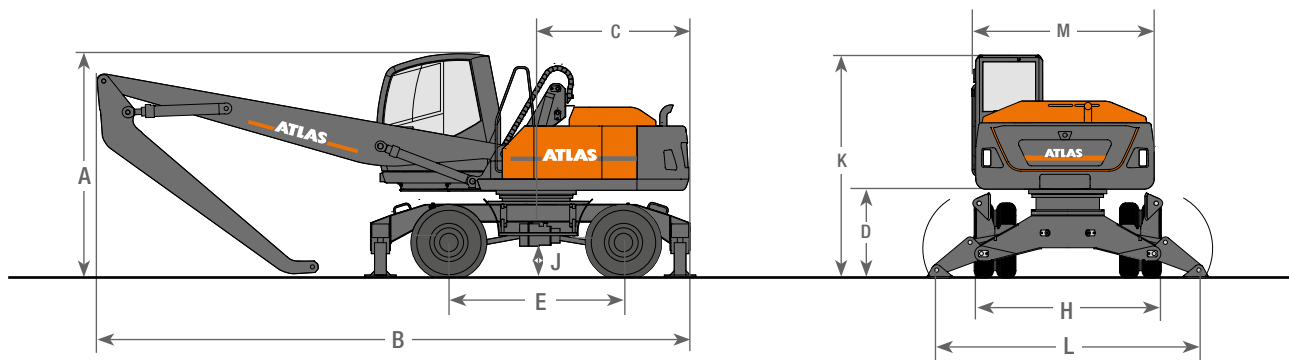
Lifting capacities 200MH: Loading boom 6.0 m (C6.6i) with Stick 4.0 m (D6.14iS) Max. reach 11.05 m

HEIGHT		2.5 m		4.0 m		5.5 m		7.0 m		8.5 m	
		FRONT	LATERAL	FRONT	LATERAL	FRONT	LATERAL	FRONT	LATERAL	FRONT	LATERAL
+ 9.0 m	outriggers down			7.14*	7.14*	5.47*	5.47*				
	outriggers up			7.14*	6.22	5.11	3.9				
+ 7.5 m	outriggers down			7.31*	7.31*	5.39*	5.39*	4.41*	4.41*		
	outriggers up			7.31*	6.21	5.17	3.95	3.55	2.7		
+ 6.0 m	outriggers down			7.14*	7.14*	5.49*	5.49*	4.43*	4.43*		
	outriggers up			7.14*	6.25	5.11	3.89	3.53	2.69		
+ 4.5 m	outriggers down	7.68*	7.68*	7.68*	7.68*	5.69*	5.69*	4.47*	4.47*	3.57*	3.57*
	outriggers up	7.68*	7.68*	7.68*	6.01	4.96	3.75	3.46	2.62	2.58	1.94
+ 3.0 m	outriggers down			8.25*	8.25*	5.85*	5.85*	4.47*	4.47*	3.48*	3.48*
	outriggers up			7.57	5.51	4.73	3.53	3.35	2.51	2.53	1.89
+ 1.5 m	outriggers down			8.07*	8.07*	5.71*	5.71*	4.28*	4.28*	3.23*	3.23*
	outriggers up			7.04	5.03	4.49	3.32	3.24	2.41	2.48	1.84
0 m	outriggers down										
	outriggers up										
- 1.0 m	outriggers down										
	outriggers up										

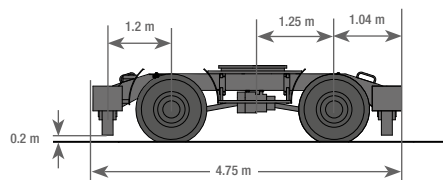
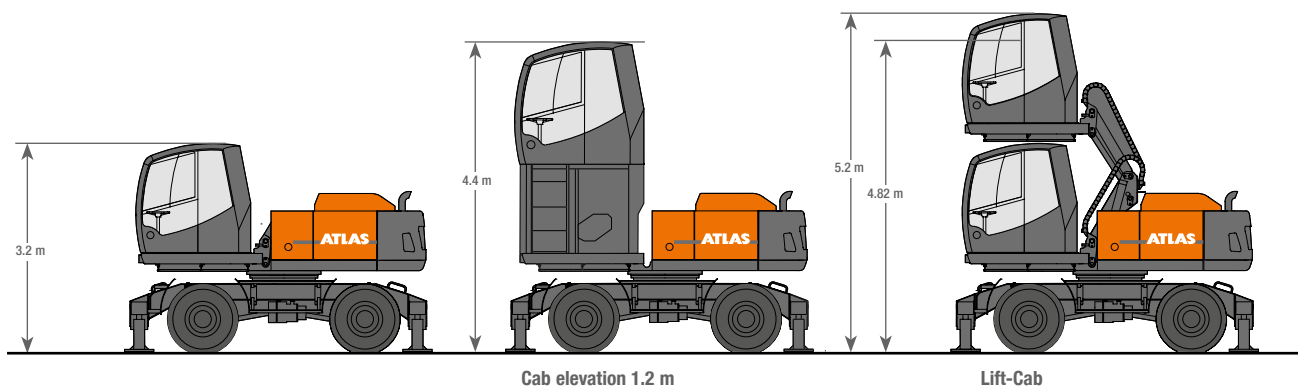
The specified max. loading capacities in tonnes include a stability of 33% or are calculated at 87% of the hydraulic lifting power, as per ISO10567. These values are applicable at the tip of the arm with optimum positioning of the corresponding arm system. * Value limited due to hydraulics. Weights of attached load carrying accessories (grab, magnet, load hook, etc.) are not included with the load carrying values.

ATLAS

Dimensions



A	TRANSPORT HEIGHT	D	CLEARANCE HEIGHT TO COUNTERWEIGHT1.25 m
	Loading boom 6.0 m with Stick 4.0 m3.08 m	E	WHEEL BASE2.50 m
	Loading boom 6.0 m with Stick and tipping cylinder 4.0 m.....3.08 m	H	DOZER BLADE WIDTH2.54 m
B	TRANSPORT LENGTH	J	GROUND CLEARANCE0.45 m
	Loading boom 6.0 m with Stick 4.0 m8.60 m	K	HEIGHT ABOVE CAB3.20 m
	Loading boom 6.0 m with Stick and tipping cylinder 4.0 m.....8.60 m	L	OUTRIGGER WIDTH (extended)4.0 m
C	REAR PIVOTING RADIUS2.19 m	M	SUPERSTRUCTURE TRANSPORT WIDTH WITH LIFT2.54 m



Undercarriage with 4 outriggers

www.atlasgmbh.com

ATLAS Maschinen GmbH
 EXCAVATORS
 Atlasstrasse 6
 27777 Ganderkesee, Germany
 T: +49 (0) 4222 954 0
 F: +49 (0) 4222 954 343
 info@atlasgmbh.com

200MH-EN (1) Effective date: September 2013. Product specifications and prices are subject to change without notice or obligation. The photographs and/or drawings in this document are for illustrative purposes only. Refer to the appropriate Operator's Manual for instructions on the proper use of this equipment. Failure to follow the appropriate Operator's Manual when using our equipment or to otherwise act irresponsibly may result in serious injury or death. The only warranty applicable to our equipment is the standard written warranty applicable to the particular product and sale and Atlas makes no other warranty, express or implied. The only warranty applicable to our equipment is the standard written warranty applicable to the particular product and sale and Atlas makes no other warranty, express or implied. Products and services listed may be trademarks, service marks or trade-names of Atlas Maschinen GmbH and/or its subsidiaries. All rights are reserved. Atlas® is a registered trademark of Atlas Maschinen GmbH. Copyright © 2010 Atlas Maschinen GmbH.